



LEVELLING RAMPS - THREE STAGE 2.5T PER RAMP 5T PER PAIR

MODEL NO: **WL301**

Thank you for purchasing a Sealey product. Manufactured to a high standard, this product will, if used according to these instructions, and properly maintained, give you years of trouble free performance.

IMPORTANT: PLEASE READ THESE INSTRUCTIONS CAREFULLY. NOTE THE SAFE OPERATIONAL REQUIREMENTS, WARNINGS & CAUTIONS. USE THE PRODUCT CORRECTLY AND WITH CARE FOR THE PURPOSE FOR WHICH IT IS INTENDED. FAILURE TO DO SO MAY CAUSE DAMAGE AND/OR PERSONAL INJURY AND WILL INVALIDATE THE WARRANTY. KEEP THESE INSTRUCTIONS SAFE FOR FUTURE USE.



Refer to instructions

1. SAFETY

- WARNING!** The levelling ramp is not to be used to raise a vehicle for maintenance or service purposes.
 - DO NOT** under any circumstances go underneath the caravan/campervan whilst the levelling ramp is in use.
 - WARNING!** For safe use of the levelling ramp, the tyre is to be fully resting within the perimeter of the ramp with no edge overhang.
 - DO NOT** put another raised item under the leveller to increase the overall height, other than a flat timber sheet that you may wish to use on a soft surface.
 - IMPORTANT:** No modifications should be made to this product.
 - DO NOT** use on excessively soft terrain, may cause bending or cracking.
 - It is strongly recommended that ramps are to be used on a hard level surface, preferably concrete.
 - It is advisable to have a second person directing the driver onto the levelling ramps and for positioning the ramps and chocks.
 - Always drive slowly onto the ramp.
 - Always apply the handbrake.
 - Only one leveller is to be used per wheel.
- NOTE:** If the ground is soft it may be beneficial to place a flat timber sheet under the leveller to minimise sinkage.

2. INTRODUCTION

Ideal for campervans and caravans (capacity 5tonne per pair). Not to be used as a lifting ramp for the purpose of working underneath the vehicle. Suitable for single axle vehicles only. Raise wheels to various heights using different points on each ramp, to level vehicle out. Anti roll off step at end of ramp. Durable and easy to clean UV resistant high-density polyethylene with a non-slip surface. Designed to interlock with Model No. WLC01 to securely chock vehicle in place once it is level.

3. SPECIFICATION

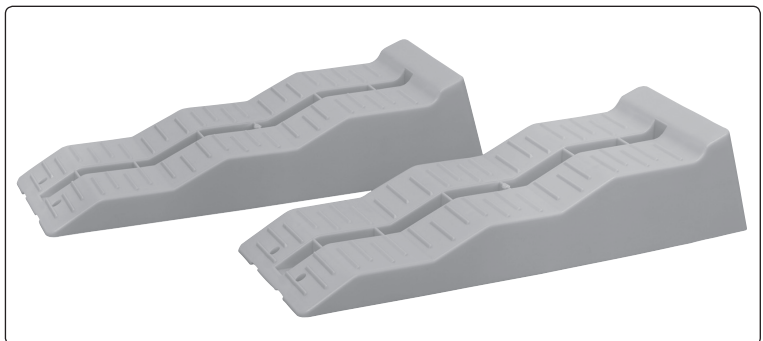
Model No: **WL301**
 Capacity Pair: 5tonne
 Extended Dimensions (LxWxH): 560x200x100mm (Platform + 30mm End Ridge)
 Nett Weight: 2.6kg

4. OPERATION

- 4.1. Position the leveller in front of the wheel/wheels you wish to level.
 - 4.2. Pull the caravan or drive the campervan in a forward motion onto the levelling ramp to the desired height.
 - 4.3. The leveller has three height positions. 40/70/100mm.
 - 4.4. Apply brakes, it is advisable to use chocks to hold vehicle in place and to help reduce roll back. **(Model No. WLC01 - Sold seperately).**
 - 4.5. Check that the tyre is fully supported by the levelling ramp and chock.
 - 4.6. The use of a spirit level is recommended to assist with levelling the caravan. (Not included).
- NOTE:** If the ground is soft it may be beneficial to place a flat timber sheet under the leveller to minimise sinkage.

5. MAINTENANCE

- 5.1. Wipe clean after use.
- 5.2. Check before and after use for wear or damage.





ENVIRONMENT PROTECTION

Recycle unwanted materials instead of disposing of them as waste. All tools, accessories and packaging should be sorted, taken to a recycling centre and disposed of in a manner which is compatible with the environment. When the product becomes completely unserviceable and requires disposal, drain any fluids (if applicable) into approved containers and dispose of the product and fluids according to local regulations.

Note: It is our policy to continually improve products and as such we reserve the right to alter data, specifications and component parts without prior notice.

Important: No Liability is accepted for incorrect use of this product.

Warranty: Guarantee is 12 months from purchase date, proof of which is required for any claim.

Sealey Group, Kempson Way, Suffolk Business Park, Bury St Edmunds, Suffolk. IP32 7AR



01284 757500



01284 703534



sales@sealey.co.uk



www.sealey.co.uk