



INSTRUCTIONS FOR
TYRE CHANGER - ASSIST ARM FOR TC10
 MODEL NO: **TC10A**

Thank you for purchasing a Sealey product. Manufactured to a high standard, this product will, if used according to these instructions, and properly maintained, give you years of trouble free performance.

IMPORTANT: PLEASE READ THESE INSTRUCTIONS CAREFULLY. NOTE THE SAFE OPERATIONAL REQUIREMENTS, WARNINGS & CAUTIONS. USE THE PRODUCT CORRECTLY AND WITH CARE FOR THE PURPOSE FOR WHICH IT IS INTENDED. FAILURE TO DO SO MAY CAUSE DAMAGE AND/OR PERSONAL INJURY AND WILL INVALIDATE THE WARRANTY. KEEP THESE INSTRUCTIONS SAFE FOR FUTURE USE.



Refer to instructions



Wear eye protection



Wear protective gloves



Wear safety footwear



Wear protective clothing



Wear ear protection



Crushing of hands hazard

1. SAFETY

- ❑ **WARNING!** Ensure that Health & Safety, Local Authority Regulations and general workshop practice Regulations are adhered to when using Tyre changer. Read and fully understand instructions and safety labels attached to machine.
- ✓ Wear appropriate Personal Protective Equipment. A full range of Personal Protective Equipment is available from your Sealey stockist.
- ✓ Wear suitable clothing to avoid snagging. **DO NOT** wear jewellery. Tie back long hair.
- ✓ Maintain tools to ensure that they are in an adequate condition for safe use and optimum performance.
- ✗ **DO NOT** use tyre changer assist arm if damaged.
- ✓ This machine should only be operated by trained personnel.
- ✓ This machine should only be used for the purpose for which it is intended and not modified in any way.
- ✓ **WARNING!** The warnings, cautions and instructions in this manual cannot cover all possible conditions and situations. The Operator/ user must apply caution and common sense.

2. INTRODUCTION

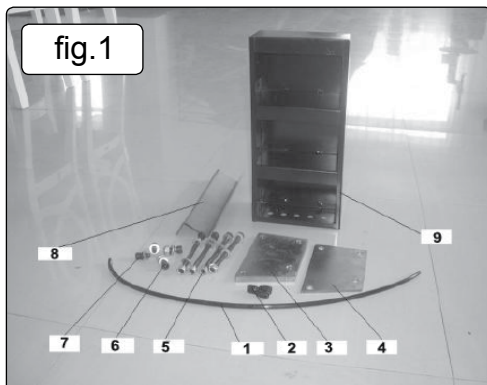
The assist arm is a must have for mounting and dismounting low profile and run flat tyres and is for use in conjunction with Model No. TC10 Tyre Changer. Operated by air supply from tyre changer. Single air ram operates three separate arms with one control lever. See Sealey website for demonstration video.

3. SPECIFICATION

Model No..... TC10A
 Height 1220mm
 Height when mounted 1550mm
 Operating pressure 8-10bar (115-145psi)
 Weight..... 70kg

4. POSITIONING AND ASSEMBLY

- 4.1. Remove packaging and check contents according to the accessory list and fig.1. Clean for assembly. The assembled appearance is as shown in the fig.2.



ACCESSORY LIST:-

1. Ø8PU hose
2. Ø8 Y-Tee
3. Plate
4. Cushion
5. Screw M10X130 (nut,flat washer) 4sets
6. Screw M10X25 (nut,flat washer) 2sets
7. Screw M10X20(flat washer) 2sets
8. Fix plate
9. Tool box.

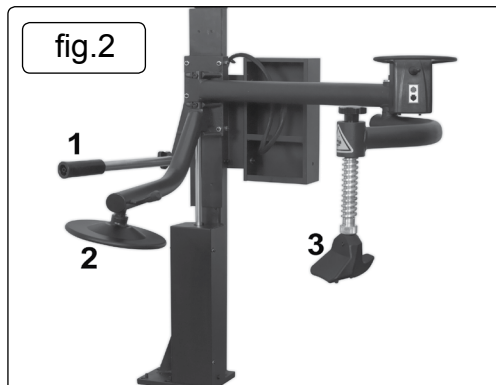
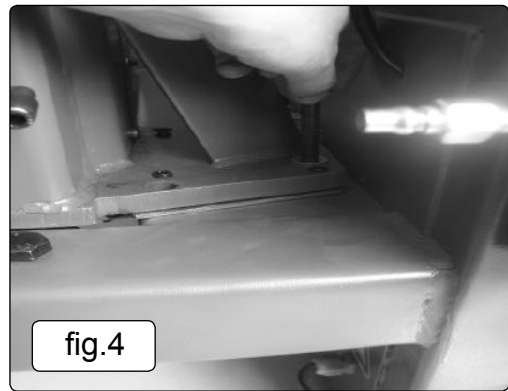
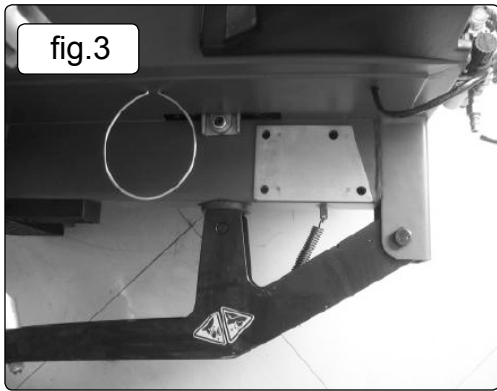
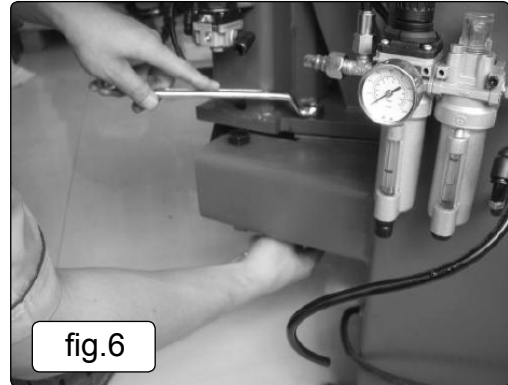
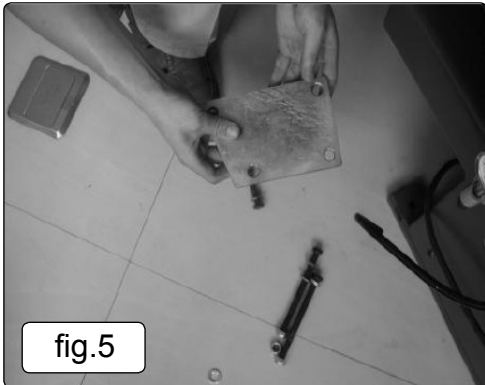


Fig.2 Key

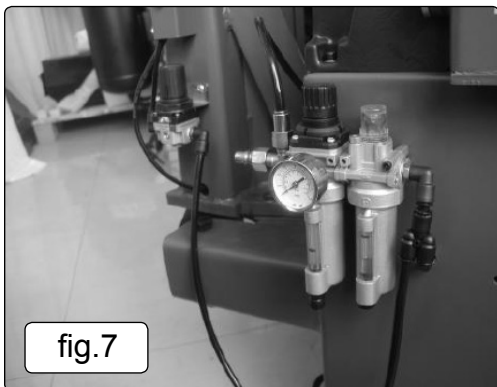
1. Roller Arm - to push down on the top bead of the tyre. Used when removing and fitting the tyre.
2. Disc Arm - to push up the bottom tyre bead. Used when removing the tyre.
3. Bead Holding Arm - to hold the top bead in position when fitting so tyre bead does not slip off. Used when fitting the tyre.



- 4.1.1. First, place the cushion fig.1.4 on the indicated position on the steel plate fig.3 and align the 4 holes of the cushion.
- 4.1.2. Position the body of the assist arm on the cushion and use the bolts fig.1.5 to fix See fig.4, fig.5, fig.6.
- 4.1.3. Remove the hose from the end of the air source fitting and use a small section of the Ø8PU hose to connect the tee with the outlet as shown in fig.7.



- 4.1.4. Insert one end of the Ø8PU hose fig 1.1 into the Y Tee and another end connected with the inlet of the pressure adjust valve of the assist arm.
- 4.1.5. Use part fig.1.7. to fix the part fig.1.8 on the corresponding position on the assist arm column and tighten. Use part fig.1.6 to fix the part fig.1.9 together with the part fig.1.8 and tighten fig.8.



- 4.1.6. Adjust the assist arm column to ensure that it is vertical: Loosen/tighten bolts fig.1.5 to adjust the column to the vertical. After adjustment, tighten all four bolts.

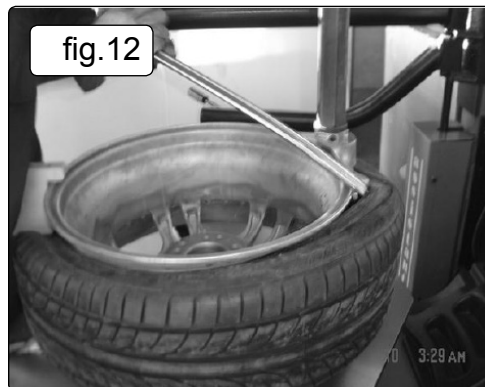


- 4.1.7. Connect the air source and operate control lever, upwards and the arms will slide upwards. Operate the control lever down and the arms will move down. If this does not happen check for air leakage. Installation is now completed.

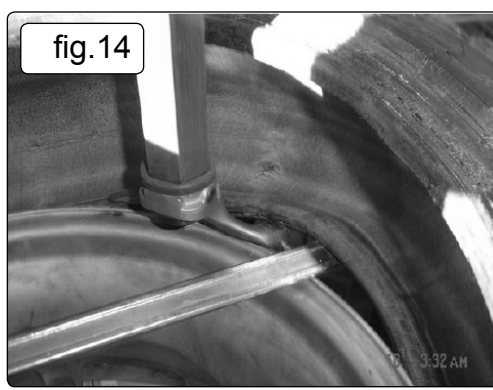
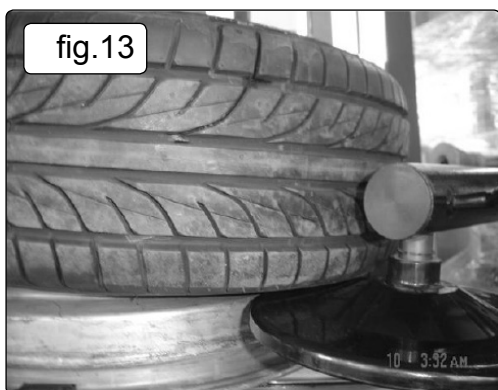
5. DEMOUNT AND MOUNT TYRE

5.1. Demount the tyre

- 5.1.1. Prepare according to the normal tyre demount method and clamp the tyre on the turntable.
 5.1.2. Gradually use the cylindrical press roller to press down the tyre and meanwhile rotate the turntable.
 5.1.3. Use a brush to spread the tyre lubricant on between the tyre and the rim. fig.10.
 5.1.4. Position the column and demounting tool head to the working position to demount the tyre.



- 5.1.5. Position tyre lever between the tyre and rim fig.11 and operate the control lever to lift up the press roller. Using the tyre lever, lever the bead of the tyre over the demounting head fig.12. Rotate the turntable clockwise until the entire upper bead is detached.
 5.1.6. Make the demount head as the support point and insert the tyre lever into the lower bead. Use the circular disk to lift up the bottom of the tyre as in fig.13, then lower down the disk until it moves to the disengaged position.



- 5.1.7. Using the tyre lever, lever the bead of the tyre over the demount head fig.14. Rotate the turntable clockwise until the tyre is completely removed from the rim.

5.2. Mount the tyre

- 5.2.1. Before mounting the tyre, clean all dirt and oil and spread tyre lubricant on the upper and lower bead.
 5.2.2. Place the upper tyre bead on the tail of the demount head and then press cylindrical press roller on the tyre to make the upper lip lower than the head of the demounting head, fig.15. Rotate the turntable clockwise. After rotating 90°, use the bead holding arm fig.16. Keep rotating the tyre until fully mounted.

WARNING! Take care when inflating Tyre.



5.3. **Standard Inflation**

- 5.3.1. Check the air supply to see if the air connection is OK.
- 5.3.2. The machine is equipped with an inflation gauge for monitoring the inflation of the tyre and the inflation pressure.
- 5.3.3. Remove turntable clamps from the tyre.
- 5.3.4. Connect the inflation hose with the tyre air valve.
- 5.3.5. In the process of inflation, check the pressure indicated on the pressure gauge does not exceed the scope specified by the manufacturer. The machine is equipped with a pressure regulating valve to prevent the pressure exceeding 3.5 bar. This can be adjusted dependent on requirements.
- 5.3.6. If the inflation pressure is too high, press the deflation button on the inflation device to reach the required air pressure.



ENVIRONMENT PROTECTION

Recycle unwanted materials instead of disposing of them as waste. All tools, accessories and packaging should be sorted, taken to a recycling centre and disposed of in a manner which is compatible with the environment. When the product becomes completely unserviceable and requires disposal, drain any fluids (if applicable) into approved containers and dispose of the product and fluids according to local regulations.

Note: It is our policy to continually improve products and as such we reserve the right to alter data, specifications and component parts without prior notice.

Important: No Liability is accepted for incorrect use of this product.

Warranty: Guarantee is 12 months from purchase date, proof of which is required for any claim.

Sealey Group, Kempson Way, Suffolk Business Park, Bury St Edmunds, Suffolk. IP32 7AR



01284 757500



01284 703534



sales@sealey.co.uk



www.sealey.co.uk