

Clarke®

PUMP



FUEL TRANSFER PUMP

Model Nos. CFT12, CFT24 & CFT230

PART NOS: 7160010, 7160020 & 7160030

INSTALLATION & OPERATING INSTRUCTIONS



INTRODUCTION

Thank you for purchasing this CLARKE Pump. The CFT pump is designed only for use with diesel fuels. It must not be used with water, petroleum fuels, alcohol or lubricating oils, nor if small solids are known to be in suspension in the fuel.

Before attempting to use this product, please read this manual thoroughly and follow the instructions carefully. In doing so you will ensure the safety of yourself and that of others around you, and you can look forward to your purchase giving you long and satisfactory service.

GUARANTEE

This product is guaranteed against faulty manufacture for a period of 12 months from the date of purchase. Please keep your receipt which will be required as proof of purchase.

This guarantee is invalid if the product is found to have been abused or tampered with in any way, or not used for its intended the purpose.

Faulty goods should be returned to their place of purchase, no product can be returned to us without prior permission. This guarantee does not effect your statutory rights.

SPECIFICATION

	CFT12	CFT24	CFT230
Motor	12V DC	24V DC	230V AC 1ph
Power Rating	0.25HP	0.25HP	0.3HP
Motor Speed	3000rpm	3000rpm	2800rpm
Current Rating	14A	7A	1.5A
Max Flow	40 l/min	40 l/min	50 l/min
Hose Size	1" ID	1" ID	1" I/D

Please note that the details and specifications contained herein, are correct at the time of going to print. However, CLARKE International reserve the right to change specifications at any time without prior notice.

GENERAL SAFETY RULES

WORK AREA

1. **Keep the work area clean and well lit.** Cluttered and dark areas invite accidents.
2. **Do not operate power products in explosive atmospheres such as in the presence of flammable liquids, gasses or dust.** Power products create sparks which may ignite dust or fumes.

ELECTRICAL SAFETY

1. **Power products must always match the power outlet. Never modify the plug in any way. Do not use adaptor plugs with earthed (grounded) power tools.** Correct plugs and outlets will reduce the risk of electric shock.
2. **Do not expose to rain or wet conditions.** Any water entering pump will increase the risk of electric shock.
3. **Do not abuse the electrical cable. Never use the cable for pulling or unplugging the pump. Keep the cable away from sources of heat, oil, sharp edges or moving parts.** Damaged or tangled cables increase the risk of electric shock.
4. **Use outdoor extension leads.** If working outdoors, always use an approved cable extension suitable for the power rating of this tool (see specifications), the conductor size should also be at least the same size as that on the machine, or larger. When using a cable reel, always unwind the cable completely. We strongly recommend that the CFT230 pump is connected to the mains supply via a Residual Current Device (RCD).

PUMP SAFETY

1. DO NOT use this pump where there is a danger of fire.
2. Always disconnect the pump from the power supply before carrying out any adjustments or servicing.
3. DO NOT use to pump any liquid other than DIESEL fuel.
4. ALWAYS ensure the ON/OFF switch, mounted on the rear of the capacitor housing (see parts lists and diagrams on page 9 & 10), is in the OFF (O) position, before connecting to the power supply - Battery or Mains. This is to avoid the possibility of arcing taking place, thereby reducing the risk of fire.
5. Switch the pump OFF immediately after the task is completed.
6. Do not use the pump if the switch does not turn it on and off. Any power product that cannot be controlled with the switch is dangerous and must be repaired.

SERVICE

1. **When necessary, have your pump serviced or repaired by a qualified person using identical replacement parts.** This will ensure that the safety of the product is maintained.

ENVIRONMENTAL PROTECTION

Take care to ensure that if diesel fuel is spilt on the roadway or any place likely to cause a hazard to passing vehicles, that it is cleaned away using sand or treated with absorbant granules designed for the purpose. Always make every effort to contain any spillage and prevent ingress into the local water course.

ENVIRONMENTAL RECYCLING POLICY



Through purchase of this product, the customer is taking on the obligation to deal with the WEEE in accordance with the WEEE regulations in relation to the treatment, recycling & recovery and environmentally sound disposal of the WEEE.

In effect, this means that this product must not be disposed of with general household waste. It must be disposed of according to the laws governing Waste Electrical and Electronic Equipment (WEEE) at a recognised disposal facility.

Please keep these instructions in a safe place for future reference.

ELECTRICAL CONNECTIONS

CFT12 & CFT24 MODELS

These models are battery operated, and provided with crocodile type clamps for attaching to the battery terminals.

The CF12 is the 12 volt model requiring a 12 V battery, and CFT24 is the 24 volt model, requiring two 12 volt batteries connected in series.

The RED clamp is connected to the POSITIVE terminal, the BLACK clamp to the NEGATIVE terminal.

CFT230 MODELS



WARNING! Read these electrical safety instructions thoroughly before connecting the product to the mains supply.

Before switching the machine on, make sure that the voltage of your electricity supply is the same as that indicated on the rating plate. This product is designed to operate using 230 VAC mains power. Connecting it to any other power source may cause damage.

This product may be fitted with a non-rewireable plug. If it is necessary to change the fuse in the plug, the fuse cover must be refitted. If the fuse cover becomes lost or damaged, the plug must not be used until a suitable replacement is obtained.

If the plug has to be changed because it is not suitable for your socket, or due to damage, it should be cut off and a replacement fitted, following the wiring instructions shown below. The old plug must be disposed of safely, as insertion into a mains socket could cause an electrical hazard.




WARNING! The wires in the power cable of this product are coloured in accordance with the following code:

Blue = Neutral

Brown = Live

Yellow and Green = Earth

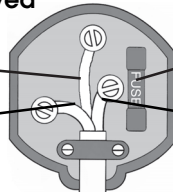
If the colours of the wires in the power cable of this product do not correspond with the terminal markings of your plug, proceed as follows.

- The wire which is coloured Blue must be connected to the terminal which is marked N or coloured Black.
- The wire which is coloured Brown must be connected to the terminal which is marked L or coloured Red.
- The wire which is coloured Yellow and Green must be connected to the terminal which is marked E or  or coloured Green.

Plug must be BS1363/A approved

Earth
(Green and Yellow)

Neutral
(Blue)



Always fit a 13 Amp fuse.

Live
(Brown)

Ensure that the outer sheath of the cable is firmly held by the clamp

We strongly recommend that this machine is connected to the mains supply via a Residual Current Device (RCD).

If in doubt, consult a qualified electrician. DO NOT attempt repairs yourself.

INSTALLATION

Firmly screw the inlet adapter provided into the inlet port, ensuring it is adequately sealed.

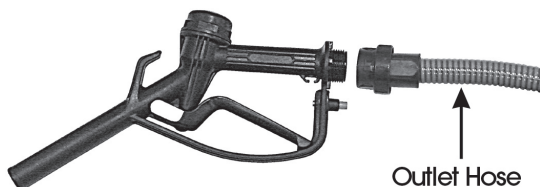
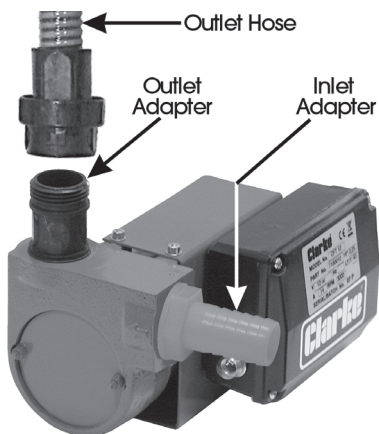
Attach an inlet hose (not supplied) using a worm drive clip, or similar, ensuring the joint is airtight. The Inlet port has an arrow embossed on the housing showing the direction of flow.

NOTE:

1. It is important that the inlet hose is completely free of holes or other imperfections, otherwise the pump will not operate satisfactorily or may not operate at all.
2. The length of hose must not be greater than 7metres which is the maximum suction height for the pump.

Before screwing on the outlet hose for the first time, it is necessary to prime the inlet side of the pump, by pouring diesel fuel into the outlet port until all air has been expelled. It will not be necessary to carry out this procedure again, unless the inlet hose has been drained.

Screw the outlet hose to the outlet adapter and the other end to the nozzle assembly.



OPERATION

WARNING: Ensure the ON/OFF switch, located at the rear of the pump, is set to the OFF (O) position BEFORE connecting the pump to the electrical supply. This is to avoid the possibility of arcing taking place and thereby reducing the risk of fire.

CFT 230

Connect the mains lead to the electrical supply, bearing in mind the warning above, and set the switch at the rear of the pump, to the ON (I) position. The pump will operate and pumping will begin.

Clarke

CFT12 & CFT24

Ensure the battery is the right type for the pump; ie. 12V for the CFT12 and 24V for the CFT24.

Ensure also that the battery terminals are clean, and, bearing in mind the warning above, firmly attach the RED clamp to the POSITIVE and the BLACK clamp to the NEGATIVE terminals respectively. Double check to ensure the clamps cannot be disturbed easily, and that the setup is protected from passers by. Set the switch, at the rear of the terminal box, to ON (I).

With the motor running, pull the nozzle trigger and proceed to pump your diesel fuel. A trigger lock is provided, simply pull the trigger fully, push IN the lock then release the trigger.

Do not allow the pump to operate for more than 30 seconds or so, when pumping has ceased.

THERMAL OVERLOAD PROTECTION

The motors of these pumps are provided with thermal overload protection.

In the event that the pump cuts out due to overheating, always investigate the cause - this could be a blocked hose or damage to the pump motor.

The 230V model will restart automatically once it has cooled down sufficiently. Nevertheless, you should ALWAYS switch the pump OFF and allow it to cool down.

The battery operated pumps are provided with a reset button, mounted on the front of the terminal box. Leave the pump to cool down for at least 10 minutes before pressing, to restart the pump.

If the condition persists, further investigation is required to determine the cause.

MAINTENANCE

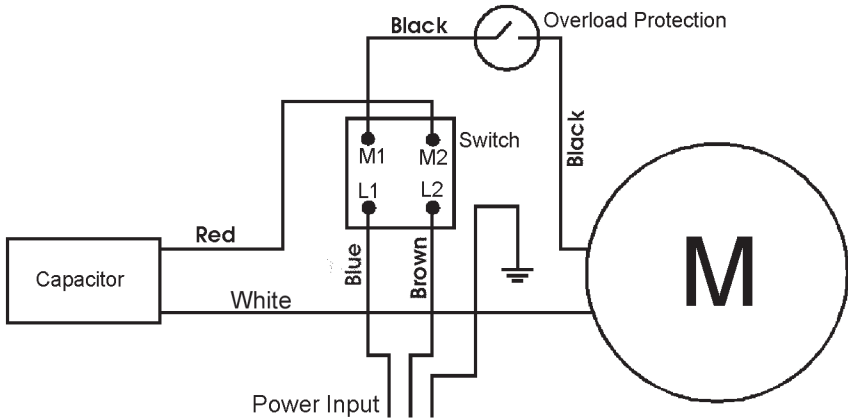
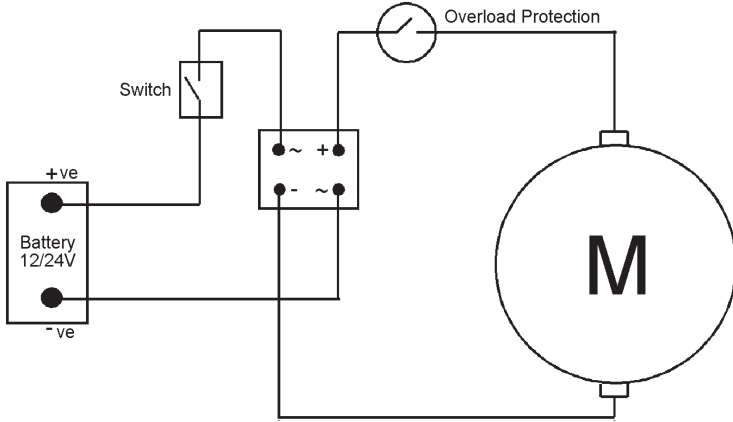
The pumps are of robust design and require little or no maintenance, except for ensuring that the electric power cables and clamps are always in good condition. Avoid using solvents if cleaning plastic parts as most plastics are susceptible to damage from various types of commercial solvents.

Ensure also that the hoses used are perfectly sound.

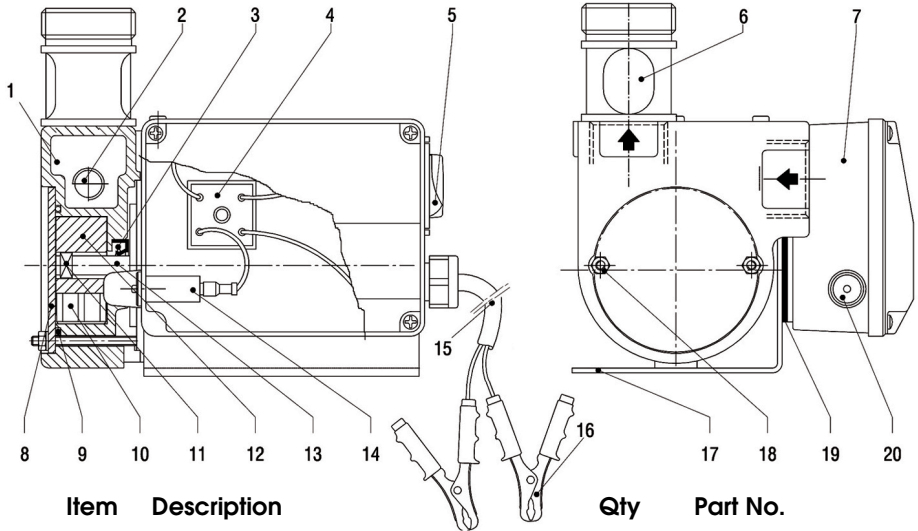
Store the pump in dry conditions protected from the weather.

For any problems requiring the dismantling and overhaul of the saw, contact your CLARKE International Service Department on 020-8988-7400. Spare parts are available as shown in the diagrams on the following pages.

WIRING DIAGRAMS

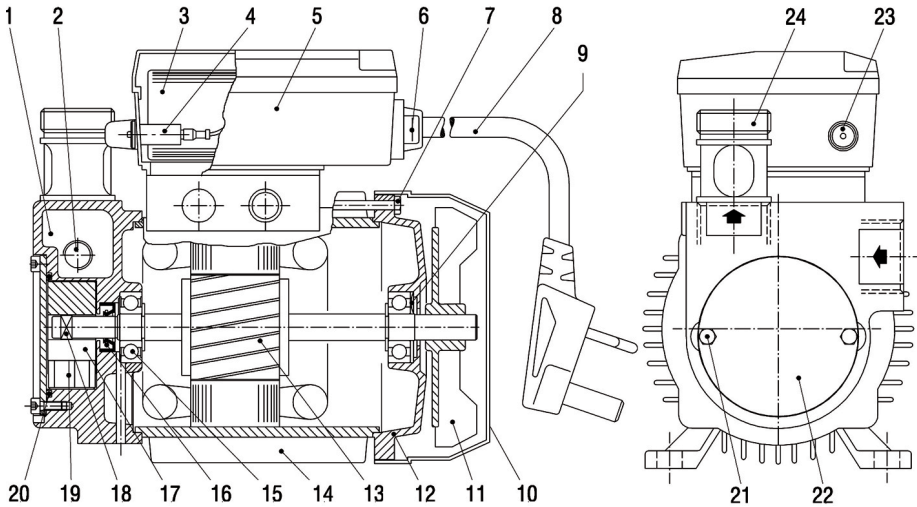


COMPONENT PARTS CFT12 & CFT24



Item	Description	Qty	Part No.
1	Pump Body	1	GM8400
2	By-pass	1	GM5478
3	Retaining Ring	1	GM8481
4	Diode	1	GM9440
5	Switch	1	GM7513
6	Outlet Adaptor	1	GM1073
7	Switch Box	1	GM6628
8	Cover	1	GM8463
9	O-Ring	1	GM8472
10	Blade	5	GMF069
11	Key	1	GMF070
12	Rotor Blade Holder	1	GMF068
13	12 Volt Motor	1	GMF066
13A	24 Volt Motor	1	GMF067
14	12 Volt Overload Protection	1	GMF089
14A	24 Volt Overload Protection	1	GM9438
15	Input Cable	1	GM8467
16	Crocodile Clamps	1	GM8482
17	Housing	1	GM9428
18	Nut	2	GM7144
19	Gasket	1	GM9441
20	Re-set Button Cover	1	GM9436
-	Outlet Hose	1	GM7656
-	Inlet adapter	1	7950210
-	Fuel Gun Complete	1	GM7655

COMPONENT PARTS CFT230



Item	Description	Qty	Part No
1	Pump Body	1	GM8401
2	By-pass	1	GM5478
3	Capacitor	1	GM7355
4	230V Overload Protector	1	GM9439
5	Capacitor Housing	1	GM6628
6	Switch	1	GM7513
7	Tie Rod	1	GM8488
8	Power Cable with plug	1	GM9448
9	Elastic Washer	1	GM6647
10	Fan Cover	1	GM7258
11	Fan	1	GM7257
12	Rear Motor Cover	1	GM7256
13	Shaft with Rotor	1	GMF063
14	Motor with Stator	1	GM8470
15	Bearing	2	GM7236
16	Retaining Ring	1	GM8481
17	Rotor Blade Holder	1	GMF068
18	Key	1	GMF070
19	Blade	5	GMF069
20	O-Ring	1	GM8472
21	Screw	2	GM7099
22	Cover	1	GM8463
23	Re-set Button Cover	1	GM9436
24	Outlet Adapter	1	GM1073
-	Outlet Hose	1	GM7656
-	Inlet Adapter	1	7950210
-	Fuel Gun Complete	1	GM7655

DECLARATION OF CONFORMITY



Clarke[®]
INTERNATIONAL

Hemnall Street, Epping, Essex CM16 4LG

DECLARATION OF CONFORMITY

This is an important document and should be retained.

We hereby declare that this product(s) complies with the following directive(s):

2004/108/EC *Electromagnetic Compatibility Directive.*

2006/42/EC *Machinery Directive.*

2006/95/EC *Low Voltage Equipment Directive.*

2002/95/EC *Restriction of Hazardous substances.*

The following standards have been applied to the product(s):

EN 292-2, EN 60204-1.

The technical documentation required to demonstrate that the product(s) meet(s) the requirement(s) of the aforementioned directive(s) has been compiled and is available for inspection by the relevant enforcement authorities.

The CE mark was first applied in: 2010

Product Description: Fuel Transfer Pumps
Model number(s): CFT12, CFT24, CFT230
Serial / batch Number: N/A
Date of Issue: 16/12/2011

Signed:

J.A. Clarke
Director

A SELECTION FROM THE VAST RANGE OF

Clarke®

QUALITY PRODUCTS

AIR COMPRESSORS

From DIY to industrial, Plus air tools, spray guns and accessories.

GENERATORS

Prime duty or emergency standby for business, home and leisure.

POWER WASHERS

Hot and cold, electric and engine driven - we have what you need

WELDERS

Mig, Arc, Tig and Spot. From DIY to auto/industrial.

METALWORKING

Drills, grinders and saws for DIY and professional use.

WOODWORKING

Saws, sanders, lathes, mortisers and dust extraction.

HYDRAULICS

Cranes, body repair kits, transmission jacks for all types of workshop use.

WATER PUMPS

Submersible, electric and engine driven for DIY, agriculture and industry.

POWER TOOLS

Angle grinders, cordless drill sets, saws and sanders.

STARTERS/CHARGERS

All sizes for car and commercial use.



PARTS & SERVICE: 020 8988 7400
E-mail: Parts@clarkeinternational.com or Service@clarkeinternational.com

SALES: UK 01992 565333 or Export 00 44 (0)1992 565335

Clarke® INTERNATIONAL Hemnall Street, Epping, Essex CM16 4LG
www.clarkeinternational.com