

Clarke®



OIL DRAINER

MODEL No: COD70

Part No: 7630203

ASSEMBLY and OPERATING INSTRUCTIONS



0707

Thank you for purchasing this Clarke Oil Drainer, which is designed to provide a means of draining vehicle oil quickly and cleanly and transporting conveniently so that it may be transferred to a larger storage tank.

Before use, please read this instruction booklet thoroughly and follow the instructions carefully. In doing so you will ensure the safety of yourself and that of others around you, and you can look forward to the oil drainer giving you long and satisfactory service.

GUARANTEE

This Clarke product is guaranteed against faulty manufacture for a period of 12 months from the date of purchase. Please keep your receipt as proof of purchase.

This guarantee is invalid if the product is found to have been abused or tampered with in any way, or not used for the purpose for which it was intended.

Faulty goods should be returned to their place of purchase, no product can be returned to us without prior permission.

This guarantee does not effect your statutory rights.

SPECIFICATIONS

Capacity 70 litres

Weight 35 kg

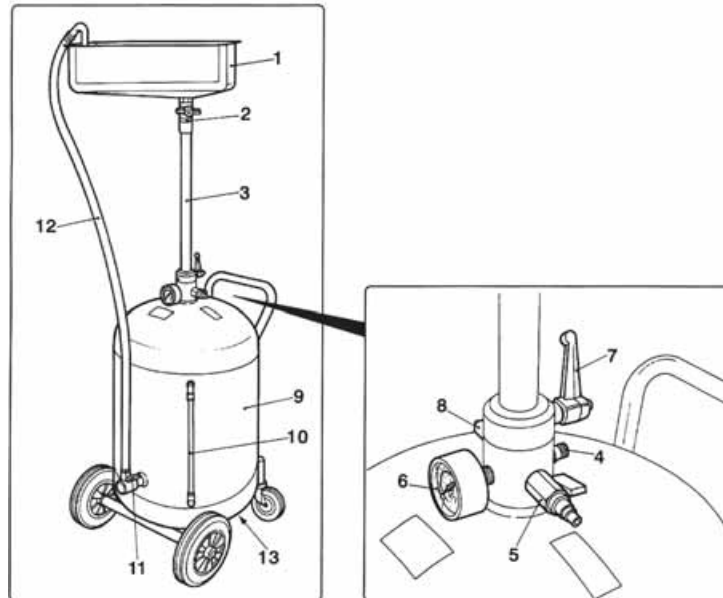
Working Temperature -10°C to 60°C

Dimensions (LxWxH) 580 x 470 x 1570 mm

SAFETY PRECAUTIONS

- Make sure that the oil drainer is in perfect condition before use i.e. No cracks which would result in oil leaks.
- When disposing of oil, it must be disposed of according to local laws. Never pour it down drains.
- When draining oil, make sure that the engine is switched off.
- Make sure that the oil drainer is on a stable surface.
- The oil being drained may be very hot - take care to avoid being burned.
- If oil is spilt, the area must be cleaned completely and sand or sawdust scattered on the area. You should also alert people in the vicinity to the possible danger of slipping.
- Make sure that the grill is in place, inside the oil collecting tank, as this helps to prevent splashing and to avoid spillage when transporting the oil drainer.

PARTS IDENTIFICATION



- | | | | |
|----|-------------------------|-----|-----------------|
| 1. | Oil collecting tank | 8. | Safety valve |
| 2. | Collecting tank tap | 9. | Tank |
| 3. | Extension pipe | 10. | Oil level gauge |
| 4. | Bleed valve | 11. | Discharge tap |
| 5. | Compressor connection | 12. | Discharge tube |
| 6. | Pressure gauge | 13. | Discharge tap |
| 7. | Height adjustment lever | | |

ASSEMBLY

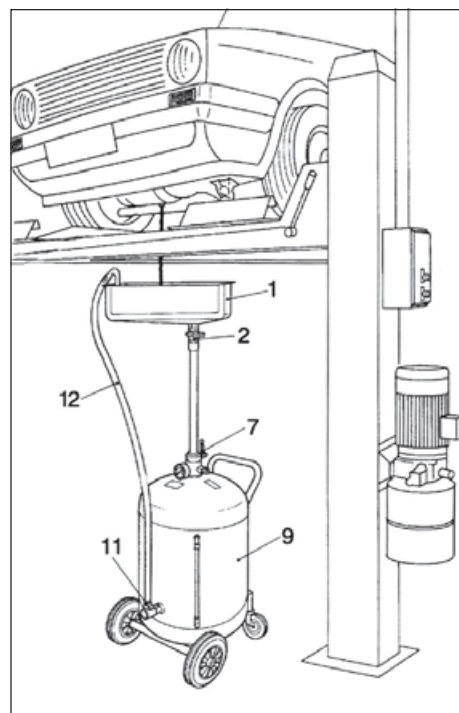
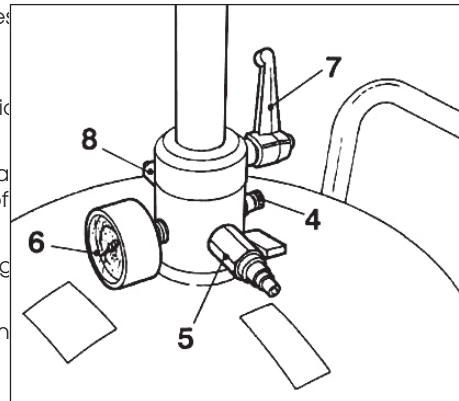
- Connect the handle to the tank and secure in supplied.



METHOD OF USE

Draining oil

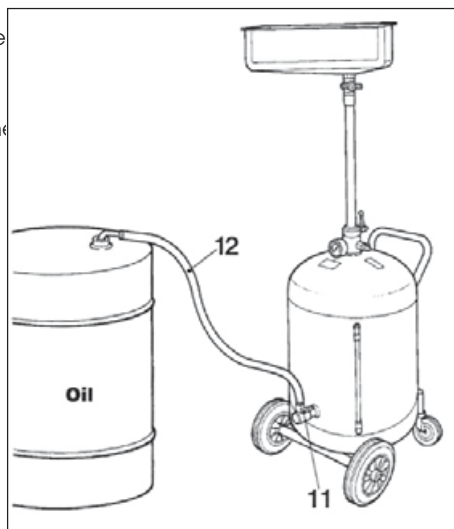
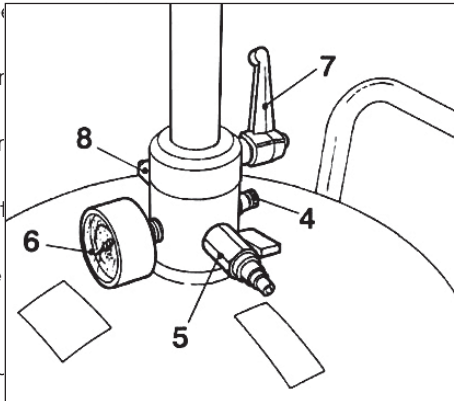
1. Make sure that the tank is not under pressure. Disconnect connection (5) to relieve the pressure.
2. Position the oil drainer beneath the vehicle.
3. Loosen the height adjustment lever (7) and move it to approximately 30cm from the bottom of the vehicle.
4. Open the bleed valve (4) and collect the oil in the tank (1).
5. Open the oil drain tap on the vehicle and collect the oil in the tank (1).



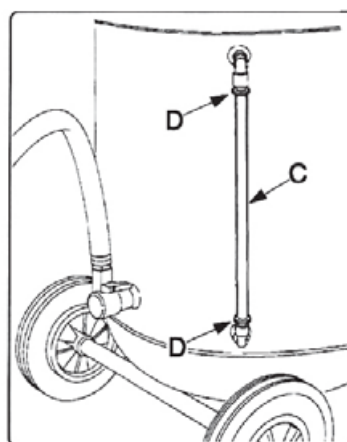
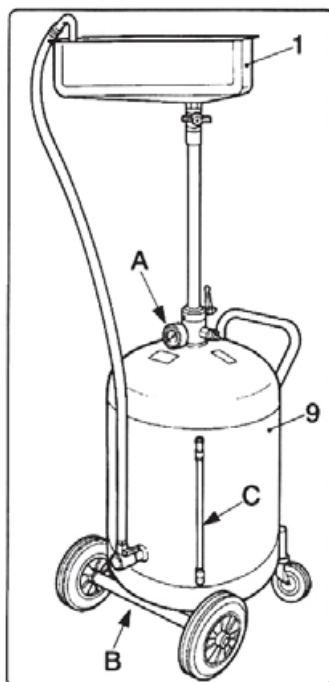
METHOD OF USE

Emptying the oil from the tank

1. Close the oil discharge taps and the bleed valve.
2. Fit the compressed air tube onto the compressor connection (5).
3. Pressurise the tank to 6 bar (see your compressor manual for details).
4. When the tank reaches 6 bar, close the bleed valve (7).
5. Turn off the compressor and remove the compressed air connection (5).
6. Place the oil discharge tube (12) into a container (11) to empty.
7. When all of the oil is discharged, remove the compressed air connection (5).
8. Remove the discharge tube (12) from the tank (1).



MAINTENANCE



1. Make sure that the pressure gauge (a) is not damaged.
2. Open tap (b) to clear any solid debris from the tank.
3. Replace tube (c) when it is no longer transparent.

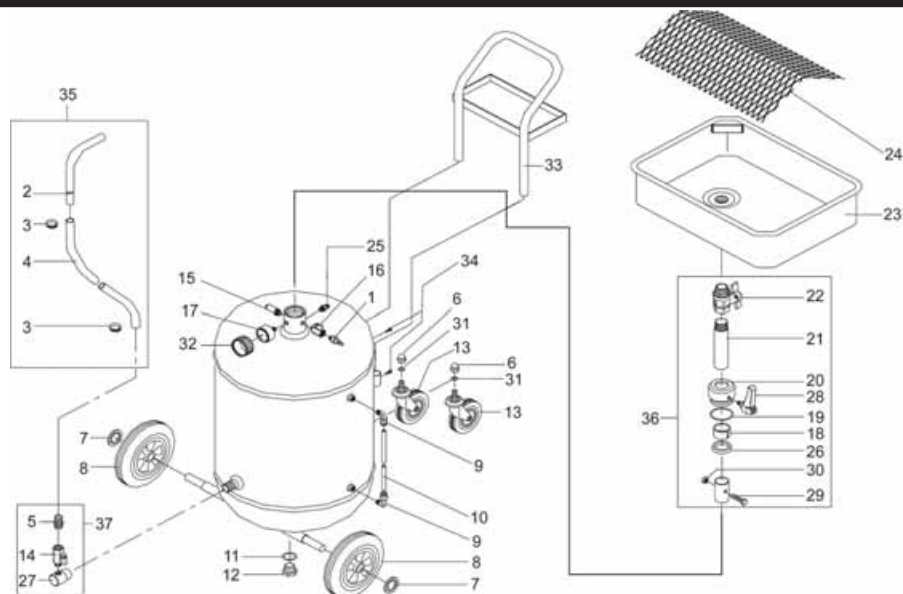
SERVICE AND REPAIR

- If there any problems with the operation of your oil drainer please refer to the troubleshooting section on the following pages.
- All servicing and repair must be carried out by qualified service technicians.

TROUBLESHOOTING

PROBLEMS	CAUSES	SOLUTIONS
The oil does not descend quickly from the oil collecting tank (1) to the tank (9).	Air lock in the system.	Open the bleed valve (4).
The oil does not come out of the tank (9).	There is solid residue in the tank, which are obstructing the extraction pipe.	Open tap (B) located on the bottom of the tank to discharge the solid residue.

PARTS DIAGRAM



No:	Description	Part No:	No:	Description	Part No:
1	Quick coupling	AP00507002	19	O-ring 147	AP00610042
2	Rigid spout	AP50410006	20	Pipe holder	AP50332041
3	Clamp	AP00720003	21	Basin supporting tube	AP60308001
4	Oil discharge hose	AP00628007	22	Ball Valve	AP02001013
5	Conical hose connector	AP00510003	23	Oil collecting basin	AP08200009
6	Nut-cap	AP00704032	24	Grid	AP08200007
7	Serrated lock washers	AP00708002	25	Drain cock	AP00508002
8	Fixed wheel	AP00614006	26	Seal ring	AP00616010
9	Push-in elbow fitting	AP00512004	27	Oil discharge connector	AP51322077
10	Tube for level	AP 50628011	28	Adjustable clamping lever	AP00618005
11	O-ring 133	AP00610016	29	Hex. Screw.	AP00704021
12	Drain plug	AP00503034	31	Washer	AP00706034
13	Swivelling wheel	AP00641012	32	Gauge cover	AP00606003
14	Mini ball valve	AP02001019	33	Handle with tool tray	AP60305001
15	Safety valve	AP02002002	34	Hexagon head screw	AP00702038
16	Mini ball valve	AP02001020	35	Oil discharge unit	AP53003001
17	Gauge	AP02003005	36	Basin supporting unit	AP64008002
18	Tube lock-ring	AP51322076	37	Outlet (set)	AP64008003

PARTS & SERVICE CONTACTS

For Spare Parts and Service, please contact your nearest dealer,
or CLARKE International, on one of the following numbers.

PARTS & SERVICE TEL: 020 8988 7400

PARTS & SERVICE FAX: 020 8558 3622

or e-mail as follows:

PARTS: Parts@clarkeinternational.com

SERVICE: Service@clarkeinternational.com