

Part No. 8355

LASER[®]

3-in-1 Riveter, RivNut & Reaming Tool

Instructions



www.lasertools.co.uk

Introduction

This robust, multifunction tool combines a rivet gun, capable of installing both hand (pop) rivets and rivnuts/nut rivets, with a reaming/nibbler tool suitable for use on mild steel ($\leq 2\text{mm}$), stainless steel ($\leq 1\text{mm}$), galvanised steel ($\leq 2\text{mm}$) and aluminium ($\leq 2\text{mm}$).

Supplied with four colour-coded rivet heads suitable for fitting 2.4, 3.2, 4.0 and 4.8mm hand (pop) rivets. Rivnut mandrel sizes include M3, M4, M5 and M6. Two different reaming/nibbler broaches are included, suitable for cutting curved and square edges.

The tool features soft grip handles allowing for easy one handed operation along with a 360° swivel head for ease of access.

Components

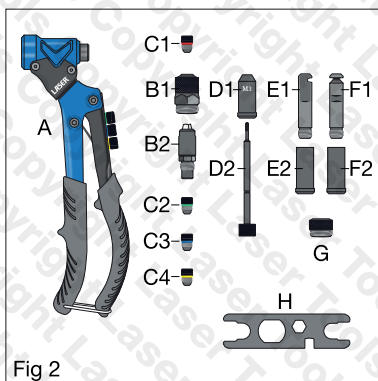


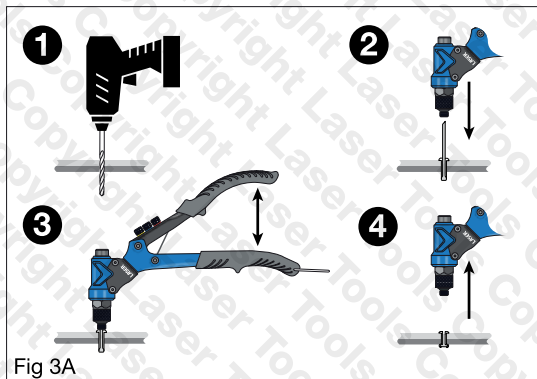
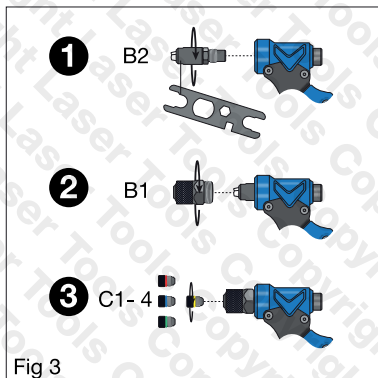
Fig 2

Ref.	Description
A	Rivet tool
B1	Rivet sleeve
B2	Rivet tool insert
C1	Rivet head red: (2.4mm 3/32")
C2	Rivet head green: (3.2mm 1/8")
C3	Rivet head blue: (4.0mm 5/32")
C4	Rivet head yellow: (4.8mm 3/16")
D1	Nut rivet sleeve (M3, M4, M5, M6)

Ref.	Description
D2	Nut rivet rod (M3, M4, M5, M6)
E1	Square reamer/nibbler broach
E2	Square reamer/nibbler sleeve
F1	Curved reamer/nibbler broach
F2	Curved reamer/nibbler sleeve
G	Sleeve securing nut
H	Multi-function wrench

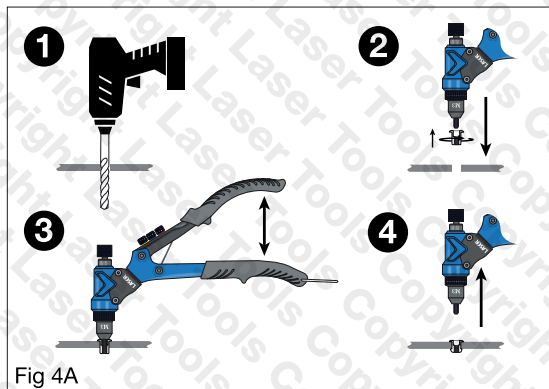
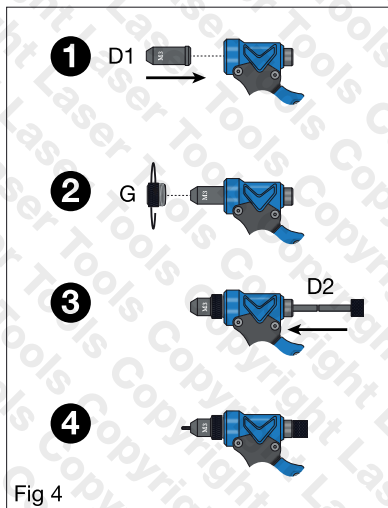
Instructions

Hand (pop) riveting:



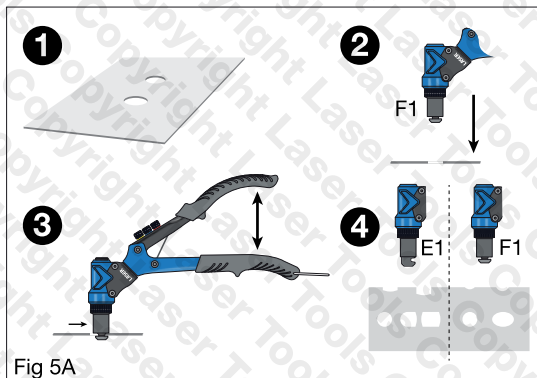
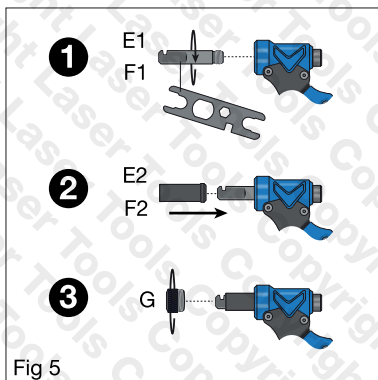
Instructions

Rivnut / nut riveting:



Instructions

Reaming / nibbling, square & curved:



Spare Parts

Note: due to the nature of the work undertaken by this kit the following components are considered consumable: **C1-4, D1 & D2, E1 & F1.**

Spare Parts Available:

61806	Spare Rivet Head 2.4 mm
61807	Spare Rivet Head 3.2mm
61808	Spare Rivet Head 4.0mm
61809	Spare Rivet Head 4.8mm
61810	Spare Rivet Nut Tie Rod & Sleeve M3
61811	Spare Rivet Nut Tie Rod & Sleeve M4
61812	Spare Rivet Nut Tie Rod & Sleeve M5
61813	Spare Rivet Nut Tie Rod & Sleeve M6
61814	Curved Broach
61815	Square Broach

Rivnuts and rivets available separately:

see **Laser part nos. 0980 - 0983 (Rivnuts) & 1799 - 1802 (rivets).**

Connect Workshop Consumables offer mixed sets of assorted rivets:

see **part nos. 31843 (assorted rivets, 475pc) & 31844 (assorted black rivets, 200pc).**

Safety Warnings - please read

- Read and understand these instructions before using the tool.
- Wear appropriate PPE.
- Do not hold the workpiece by hand; secure workpiece with a clamp or vice, etc.
- Replace worn out parts (see spare parts list).
- Clean the tool components after use and store in a clean and dry environment.



Safety First. Be Protected.

Our products are designed to be used correctly and with care for the purpose for which they are intended. No liability is accepted by the Tool Connection for incorrect use of any of our products, and the Tool Connection cannot be held responsible for any damage to personnel, property or equipment when using the tools. Incorrect use will also invalidate the warranty.

If applicable, the applications database and any instructional information provided has been designed to offer general guidance for a particular tool's use and while all attention is given to the accuracy of the data no project should be attempted without referring first to the manufacturer's technical documentation (workshop or instruction manual) or the use of a recognised authority such as Autodata.

It is our policy to continually improve our products and thus we reserve the right to alter specifications and components without prior notice. It is the responsibility of the user to ensure the suitability of the tools and information prior to their use.



8355_Instructions_V2



www.lasertools.co.uk



Distributed by The Tool Connection Ltd
Kington Road, Southam, Warwickshire CV47 0DR
T +44 (0) 1926 815000 F +44 (0) 1926 815888
info@toolconnection.co.uk www.toolconnection.co.uk

Guarantee

If this product fails through faulty materials or workmanship, contact our service department direct on: **+44 (0) 1926 818186**. Normal wear and tear are excluded as are consumable items and abuse.

www.lasertools.co.uk