



ZARGES



Introducing Reachmaster™

Mobile Scaffold Tower with working heights from 2.5m to 8.5m

NEW Reachmaster™

Specification

- Scaffolding size, approx.: 1.80m x 0.68m
- 8 different working heights from 2.60m up to 8.5m
- Folding base frame is ideal for rapid erection and dismantling
- Minimum space required for transport and storage (folding frame only 1900mm x 960mm x 360mm when closed)
- Mobile, will also go through doorways (model 5600101)
- Certified to EN 1004 Class 3 (can be loaded up to 200kg/m²)
- Safe working load: 210kg
- Erected using 3T method (Through the Trapdoor)
- Robust - Ø50mm frames and braces



1. Folding base frame

Folding frame can be easily transported and stored due to compact closed dimensions (1900mm x 960mm x 360mm) Is easy to erect and dismantle quickly and safely



2. Frames & spring clips

Robust Ø50mm frames are easily locked in place using spring clips



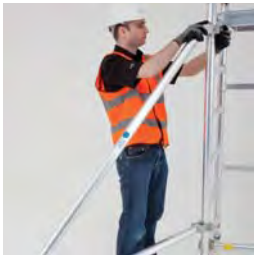
3. Wheels

Ø125mm wheels supplied with towers up to 4.5m platform height
Ø150mm height adjustable wheels supplied with towers from 5.8m platform height



4. Trapdoor platform

Platform size approx. 1.80m x 0.68m



5. Stabilisers

Four stabilisers included from 1.7m platform height and above
• Choose option 5600103-OUT



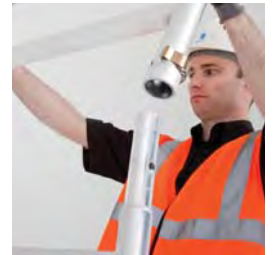
6. Braces

Braces easily snap into place and are colour coded for easy identification:
Blue = diagonal braces
Silver = horizontal braces



7. Toeboards

Toeboards included from 2.5m platform height and above
Also available as optional extra for lower heights

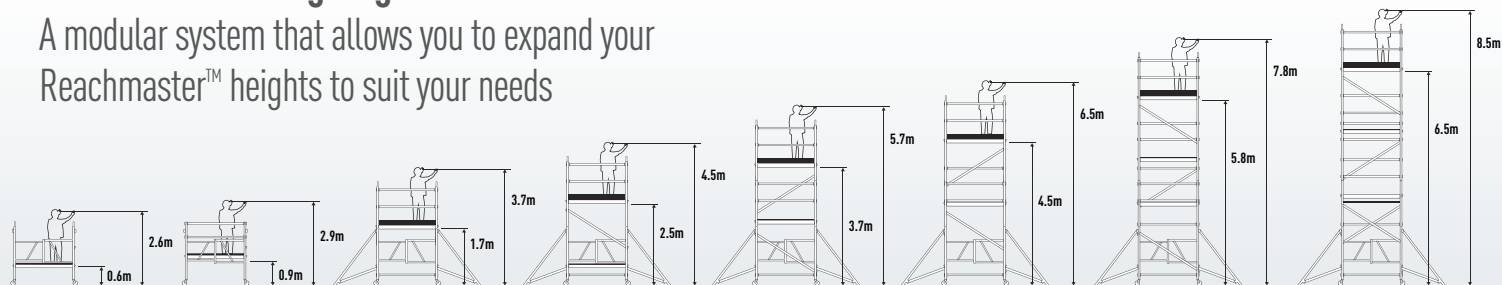


8. Aluminium spigots

Tough aluminium spigots that can withstand rigorous use

8 individual working heights.

A modular system that allows you to expand your Reachmaster™ heights to suit your needs



Working height, approx (m)	2.6	2.9	3.7	3.7	4.5	5.7	6.5	7.8	8.5
Platform height (m)	0.6	0.9	1.7	1.7	2.5	3.7	4.5	5.8	6.5
Scaffolding size (m)	1.80m x 0.68m								
Weight (kg)	27	36	46	61	92	112	117	165	175
Order no.	5600101	5600102	5600103-IN	5600103-OUT	5600104	5600105	5600106	5600107	5600108

Reachmaster™ is German engineering
at its finest



Reachmaster™ is mobile and very easy to erect

Tough enough for virtually any environment

Reachmaster™ is the robust and easy to use mobile scaffold tower that is suitable for a whole range of jobs, from working on low ceilings or decorating internal walls, to maintaining the outside of tall buildings.

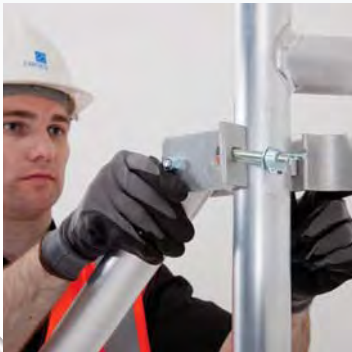
Whatever it is you need to do, Reachmaster™ is compact enough to be stored and transported with a minimum of space, and quick and safe to erect thanks to its folding base frame and braces that snap into place.



Unfold and lock in base unit



Tough spigots that will not break



Add stabilisers to increase tower footprint



Add Toeboards for added safety



Reachmaster™ folding base unit is only 1900mm x 960mm x 360mm when closed. Compact and easy to store or transport.



ZARGES—
Access.
Packaging,
transportation.
Special construction

At ZARGES, our focus is on the customer. Innovative products, special solutions and comprehensive service, ensure our customers can rely on the safety and high performance of our range. Find out more at:

www.zarges.com/uk



ZARGES (UK) Ltd. Unit 8 Holdom Avenue, Saxon Park Industrial Estate, Bletchley, Milton Keynes MK1 1QU
Tel: 01908 641118 Fax: 01908 648176 Email: sales@zarges.co.uk

Further information is available on our website or from your specialist dealer:

