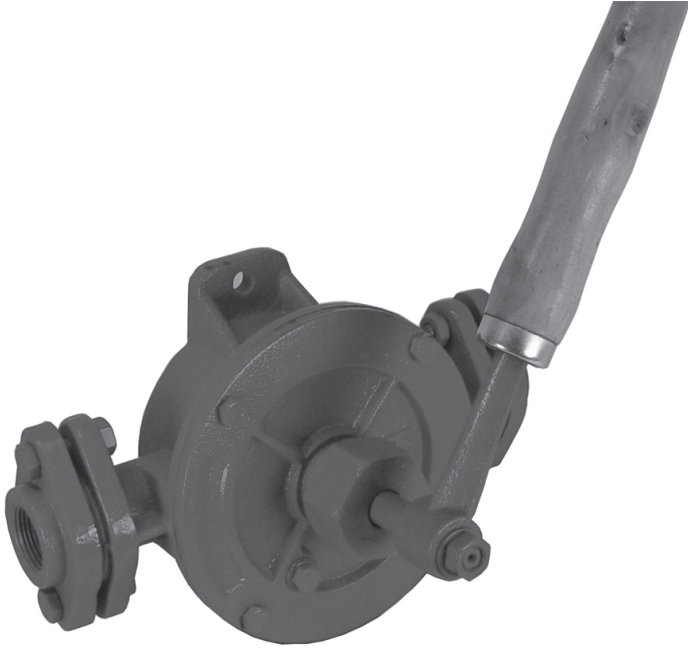


Planika®



SEMI-ROTARY HAND PUMP

Model No: CRWP1

PART NO: 7130030

OPERATING INSTRUCTIONS



INTRODUCTION

Thank you for purchasing this CLARKE Semi-rotary Hand Pump. This product has been designed to give long and trouble free service. If however, having followed the instructions in this booklet carefully, you encounter problems, take the unit to your local CLARKE dealer.

GUARANTEE

This product is guaranteed against faulty manufacture for a period of 12 months from the date of purchase. Please keep your receipt which will be required as proof of purchase. This guarantee is invalid if the product is found to have been abused, tampered with, or not used for its intended purpose.

Faulty goods should be returned to their place of purchase, no product can be returned to us without prior permission. This guarantee does not effect your statutory rights.

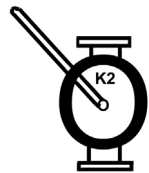
SPECIFICATION

Dimensions, (Length x Depth x Height):	195 mm x 205 mm x 286 mm
Weight:	8.0 kg
Inlet/Outlet Thread Size:	1" BSP
Max Flowrate (subject to operator input):	22.50 L/min
Suction Lift:	7 m (at sea level)
Max Head:	25 m
Suitable for Pumping:	Water, Oil or Diesel

DO NOT USE THIS PUMP WITH PETROL OR EDIBLE OILS

INSTALLATION

1. Remove connecting flanges (11) and remove the paper membranes used to close off the inlet and outlet openings during transit.
2. Depending upon the intended use, it may be desirable to flush out any residual oil from inside the pump.
3. Install the pump in a vertical position on a wall or similar structure, with the outlet (indicated by the raised lettering e.g. K2) facing upwards as shown (fixing bolts not supplied). Also, always observe any arrows on the pump cover, indicating the direction of flow.
 - Vertical mounting is essential because the valves close under gravity and if they cannot close, the pump cannot produce suction.
4. Fit the wooden handle, by tapping gently to ensure it is a tight fit on the handle spike. The handle can be repositioned to point in any direction after removing the shaft end nut (9).



5. Connect any inlet and discharge hose connectors which are compatible with the 1" BSP connecting flanges of the pump.

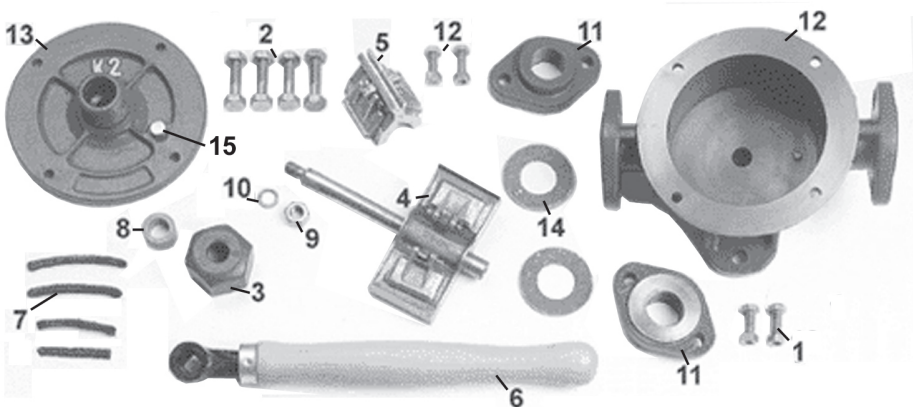
MAINTENANCE

1. Ensure that the seal compression nut (3) is sufficiently tight. If not, leakage can take place from the pump handle shaft.
2. If using the pump for water, and there is a likelihood of freezing when not in use, drain the pump via the access plug (15).
3. If the pump has been used for pumping any liquid likely to leave chemical residues, it should be flushed through with clean water after use.
4. If the pump will be unused for extended periods, insert some oil through the access plug (15) to protect the internal parts.
 - Ensure the oil used does not contaminate the medium being pumped.
5. Periodically check that all nuts and bolts are tight.

A wide range of accessories are available from your nearest CLARKE dealer, including hoses and hose adaptors and couplings.

COMPONENT PARTS

- | | |
|----------------------------------------|----------------------------|
| 1. HTCRWP101 Flange Bolt & Nut | 8. HTCRWP108 Gland Ring |
| 2. HTCRWP102 Cover Bolt & Nut | 9. HTCRWP109 Shaft End Nut |
| 3. HTCRWP103 Seal Compression Nut | 10. HTCRWP110 Washer |
| 4. HTCRWP104 Wing Piston, Flap & Shaft | 11. HTCRWP111 Conn Flange |
| 5. HTCRWP105 Suction Divider, Flaps | 12. HTCRWP112 Casing |
| 6. HTCRWP106 Handle & Handle Spike | 13. HTCRWP113 Cover |
| 7. HTCRWP107 Gland Packing Set | 14. HTCRWP114 Flange Joint |
| | 15. HTCRWP115 Access Plug |



A SELECTION FROM THE VAST RANGE OF

Clarke®

QUALITY PRODUCTS

AIR COMPRESSORS

From DIY to industrial, Plus air tools, spray guns and accessories.

GENERATORS

Prime duty or emergency standby for business, home and leisure.

POWER WASHERS

Hot and cold, electric and engine driven - we have what you need

WELDERS

Mig, Arc, Tig and Spot. From DIY to auto/industrial.

METALWORKING

Drills, grinders and saws for DIY and professional use.

WOODWORKING

Saws, sanders, lathes, mortisers and dust extraction.

HYDRAULICS

Cranes, body repair kits, transmission jacks for all types of workshop use.

WATER PUMPS

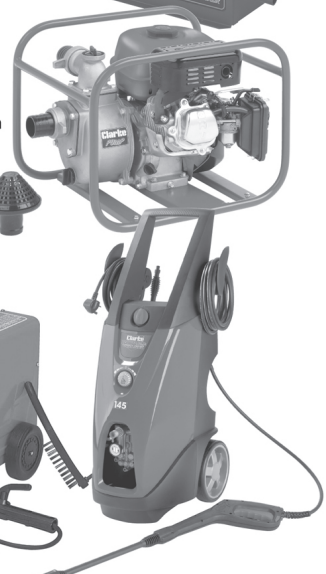
Submersible, electric and engine driven for DIY, agriculture and industry.

POWER TOOLS

Angle grinders, cordless drill sets, saws and sanders.

STARTERS/CHARGERS

All sizes for car and commercial use.



PARTS & SERVICE: 0208 988 7400

E-mail: Parts@clarkeinternational.com or Service@clarkeinternational.com

SALES: UK 01992 565333 or Export 00 44 (0)1992 565335

Clarke INTERNATIONAL Hemnall Street, Epping, Essex CM16 4LG
www.clarkeinternational.com