

# Charlton®



WARNING: Do not use the machine without reading this manual

## POWER WASHER

MODEL NO: JET 9000

PART NO: 7333502

## OPERATION & MAINTENANCE INSTRUCTIONS



GC0913

---

## **INTRODUCTION**

---

Thank you for purchasing this CLARKE Power Washer.

The machine has been designed to use hot or cold water to clean any surfaces which can stand the force of the high pressure water jet and the action of the detergents used.

The machine must only be used for the purpose for which it was designed.

Before attempting to use this product, please read this manual thoroughly and follow the instructions carefully. In doing so you will ensure the safety of yourself and that of others around you, and you can look forward to your purchase giving you long and satisfactory service.

---

## **GUARANTEE**

---

This product is guaranteed against faulty manufacture for a period of 12 months from the date of purchase. Please keep your receipt which will be required as proof of purchase.

This guarantee is invalid if the product is found to have been abused or tampered with in any way, or not used for the purpose for which it was intended.

Faulty goods should be returned to their place of purchase, no product can be returned to us without prior permission.

This guarantee does not effect your statutory rights.

---

## GENERAL SAFETY RULES

---



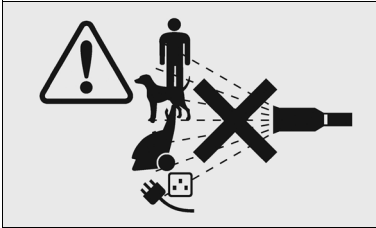
**WARNING: WATER AT HIGH PRESSURE CAN BE DANGEROUS AND CAN CAUSE DAMAGE IF THE OPERATOR IS CARELESS. NEVER ALLOW ANYONE TO OPERATE THIS MACHINE UNLESS THEY ARE FAMILIAR WITH THE SAFETY PRECAUTIONS.**

---

1. High pressure water jets can be dangerous if subject to misuse. They must not be directed at animals or people.
2. **NEVER** allow children or untrained personnel to use this product.
3. **NEVER** operate the power washer with any covers removed.
4. **NEVER** attempt any electrical or mechanical repairs to this power washer. Always refer to your Clarke dealer.
5. **NEVER** supply any liquid other than water to the water inlet.
6. Never use the detergent facility to introduce flammable liquids/solvents, e.g. paint thinners, petrol, oil due to risk of explosion.
7. **ALWAYS** release any residual pressure in the machine by turning off the water supply and operating the trigger, before disconnecting the hose.
8. **ALWAYS** keep the pressure washer itself dry and clear of water spray.
9. Never direct the spray jet at the pressure washer itself or any other electrical equipment.
10. **ALWAYS** wear protective clothing, safety shoes and safety glasses. Loose particles & other debris may be propelled at high speed by the water jet.
11. **ALWAYS** hold the spray gun firmly & expect the gun to 'kick' when starting.
12. **ALWAYS** disconnect from the water supply and ensure the machine is completely drained when not in use. Store in a cool dry location.
13. Only use chemical cleaning agents (detergents), that are approved for pressure washers. CLARKE Traffic Film Remover or CLARKE Wash and Wax (available from your dealer), are recommended.
14. **ALWAYS** disconnect from the electrical power supply and remove the plug from the socket before carrying out any maintenance.
15. **ONLY** use original spare parts from the Clarke service department.
16. High pressure hoses, fittings and couplings are important for the safety of the machine. Use only hoses, fittings and couplings recommended by the manufacturer.
17. **NEVER** use the pressure washer if the power cable or other important parts of the power washer are damaged.
18. If an extension cable is used, the cable and plug must be of watertight construction. Inadequate extension cables can be dangerous.

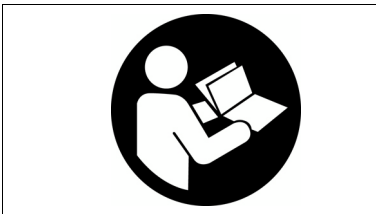
## SAFETY SYMBOLS

The following symbols are displayed on the machine.

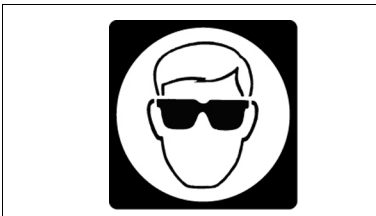


**WARNING:** Do not discharge the water spray at persons or animals. Keep clear of nozzle.

**WARNING:** Never direct spray toward any electrical device or electrical outlet.



**Read Instructions**



**Wear Eye Protection**



**Wear Hand Protective Gloves**



**Falls within the WEE (Waste Electrical/  
Electronic) Directive**

# ELECTRICAL CONNECTIONS



**WARNING: READ THESE ELECTRICAL SAFETY INSTRUCTIONS THOROUGHLY BEFORE CONNECTING THE PRODUCT TO THE MAINS SUPPLY.**

Before switching the product on, make sure that the voltage of your electricity supply is the same as that indicated on the rating plate. This product is designed to operate on 230VAC 50Hz. Connecting it to any other power source may cause damage.

This product may be fitted with a non-rewireable plug. If it is necessary to change the fuse in the plug, the fuse cover must be refitted. If the fuse cover becomes lost or damaged, the plug must not be used until a suitable replacement is obtained.

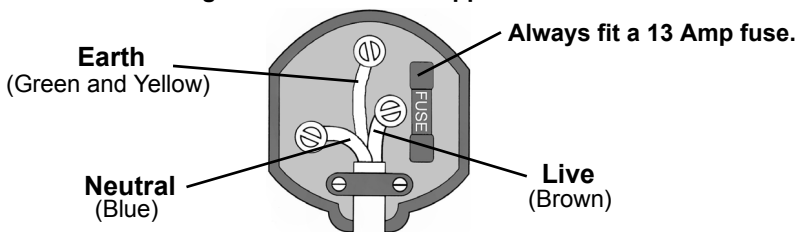
If the plug has to be changed because it is not suitable for your socket, or due to damage, it should be cut off and a replacement fitted, following the wiring instructions shown below. The old plug must be disposed of safely, as insertion into a mains socket could cause an electrical hazard.



**WARNING: THE WIRES IN THE POWER CABLE OF THIS PRODUCT ARE COLOURED IN ACCORDANCE WITH THE FOLLOWING CODE:  
BLUE = NEUTRAL    BROWN = LIVE    YELLOW AND GREEN = EARTH**

- The wire which is coloured **Blue** must be connected to the terminal which is marked **N** or coloured **Black**.
- The wire which is coloured **Brown** must be connected to the terminal which is marked **L** or coloured **Red**.
- The wire which is coloured **Yellow and Green** must be connected to the terminal which is marked **E** ( $\perp$ ) or coloured **Green**.

**Plug must be BS1363/A approved.**

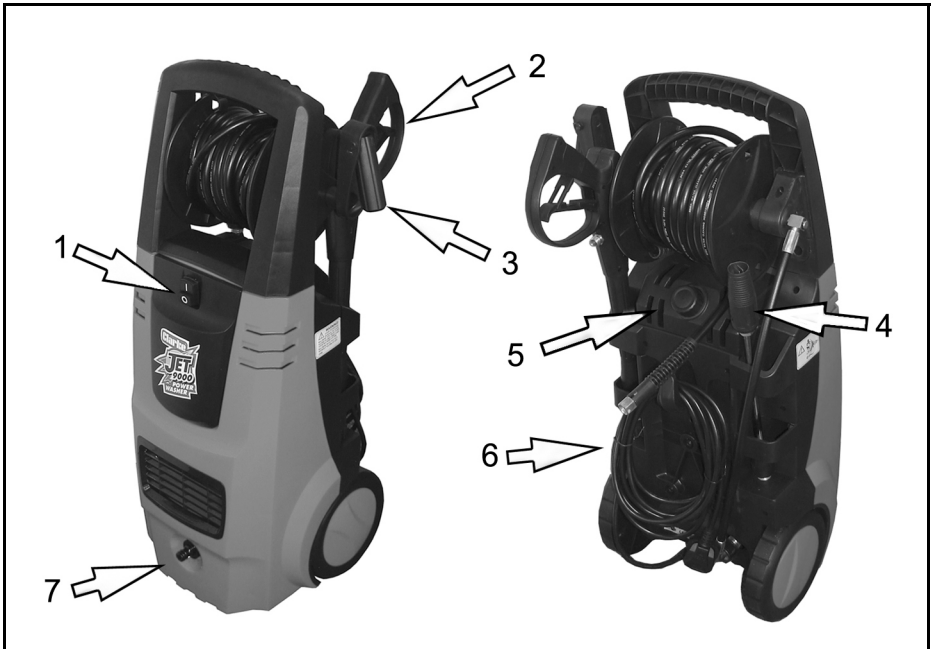


**Ensure that the outer sheath of the cable is firmly held by the clamp**

**WE STRONGLY RECOMMEND THAT THIS MACHINE IS CONNECTED TO THE MAINS SUPPLY VIA A RESIDUAL CURRENT DEVICE (RCD)**

If in any doubt, consult a qualified electrician. DO NOT attempt any repairs yourself.

# OVERVIEW



1	On/OFF Switch	5	Detergent Container
2	Spray Gun Assembly	6	Power Cable
3	Reel Handle	7	Mains Water Inlet
4	Lance		

---

## LIST OF CONTENTS

---

The following items should be supplied in the carton. If any parts are missing or damaged, please see your Clarke dealer where you purchased the machine.

1 x Power Washer
1 x Gun Assembly
1 x Lance c/w fitted Pencil-Jet / Fan - High / Low Nozzle
1 x Hose Assembly on integral Hose-Reel
1 x Inlet Hose Adaptor
1 x Instruction Manual
1 x Accessory Adaptor

---

## BEFORE USE

---

Unpack your power washer and check to ensure all the items listed above are present.

### UNFOLDING THE HOSE REEL HANDLE

1. Open the reel handle from its folded position before use.
2. Release the hose from the retaining clip on the hose reel, then pull the hose from the reel to unwind whatever length is required.

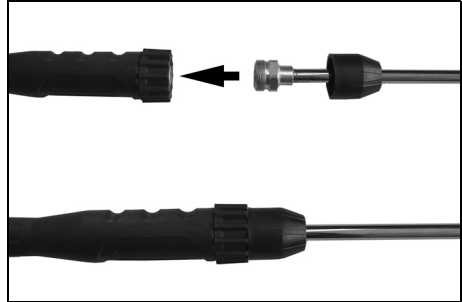
- Winding the handle clockwise will reduce the length of the hose.
- If the spray gun/lance assembly is not attached, the hose can be secured in the retaining clip when the hose is re-wound.



## ASSEMBLING THE LANCE

The lance must be fitted to the gun assembly before use.

1. Assemble by screwing the end of the lance into the gun assembly.
2. Tighten the locking nut using a 22 mm spanner.
3. Slide the plastic cap into position.



## CONNECTING THE GUN TO THE HOSE

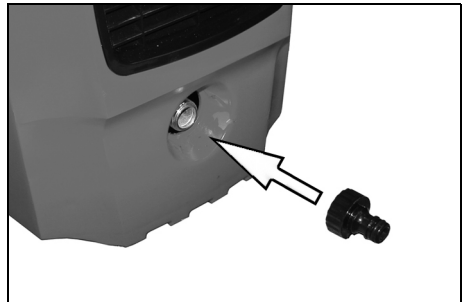
Connect the gun to the hose by screwing on the connector and tightening with a 17 mm spanner.



## CONNECTING THE MAINS WATER SUPPLY

**NOTE:** Always follow any regulations of your local water supplier.

1. Screw the inlet adaptor to the water inlet as shown.
2. Connect the mains water supply hose to the inlet adaptor. A standard garden hose is suitable.
  - It is recommended to use a reinforced hose with an inner diameter of at least 10 mm available from your CLARKE dealer.



- Ensure the water connection is secure.

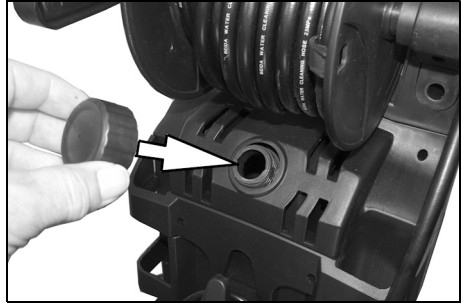
**NOTE:** The water source must provide a minimum of 6.6 litres per minute at not more than 40°C.



## FILLING WITH DETERGENT

If you intend to use detergent:

1. Remove the detergent filler cap located at the rear of the pressure washer and fill with detergent.
2. Replace cap before use.
3. Only use detergents recommended for use with pressure washers, such as CLARKE Traffic Film Remover which is a powerful 'low foaming' agent for car cleaning, patio cleaning etc., or CLARKE Wash & Wax, both available from your CLARKE dealer.



DESCRIPTION	SIZE	PART NUMBER
Car Wash & Wax Shampoo	5 Litre	3050815
Concentrated Traffic Film Remover	5 Litre	3050821
Concentrated Traffic Film Remover	25 Litre	3050820
Ready To Use Traffic Film Remover	5 Litre	3050818
Ready To Use Traffic Film Remover	25 Litre	3050819

The use of unsuitable cleaning agents may adversely affect the safety of the machine. Before use, refer to correct operating temperatures on page 17.

## ACCESSORIES

A range of accessories is available from your Clarke dealer including:



Patio  
Cleaner  
(7310003)



7 Piece  
Accessory Kit  
(7310004)

(require the use of the adaptor supplied with this machine)

- Accessories with bayonet style couplings such as those shown can be fitted to the hose by means of the adaptor supplied.

# OPERATION

## GETTING STARTED

1. Ensure that the water supply is correctly connected and turned on.



**WARNING: FAILURE TO TURN ON THE WATER FULLY COULD CAUSE DAMAGE TO THE POWER WASHER INTERNAL COMPONENTS.**

**WARNING: DO NOT USE THE POWER WASHER IF THE SUPPLY CABLE OR IMPORTANT PARTS OF THE MACHINE ARE DAMAGED, E.G. SAFETY DEVICES, HIGH PRESSURE HOSES, TRIGGER.**

**WARNING: WE RECOMMEND THAT THIS MACHINE IS CONNECTED TO THE MAINS SUPPLY VIA A RESIDUAL CURRENT DEVICE (RCD).**

2. Plug the power cable into the mains supply.
3. Release the trigger lock.
  - The pressure washer is now ready for use.



4. Press the start switch ('I').
5. Pull the trigger.

**NOTE:** When the trigger is pulled the pressure of water will cause the lance/gun assembly to kick back suddenly.

6. When using the power washer for the first time, let it run for a few moments so that any air bubbles or other impurities are discharged.
7. Release the trigger to stop the water flow.

- This pressure washer is fitted with an auto stop system to protect the motor during use.
- When the trigger is released, the motor will stop. When the trigger is squeezed the motor will start up again.



## ADJUSTING THE SPRAY

The nozzle is adjustable to allow you to adjust the spray from a narrow jet of water to a wide spray.

To adjust the nozzle, proceed as follows:

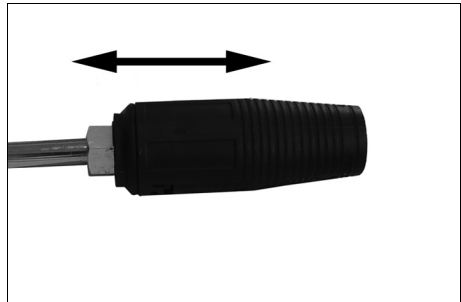
1. Hold the shaft of the lance in one hand.
2. Twist the nozzle with the other hand.
3. To vary the spray between narrow and wide, turn the nozzle anticlockwise through 180°.



## ADJUSTING THE PRESSURE

There are three ways to adjust the pressure of the water:

1. Slide the nozzle forwards to lower the pressure.
2. Back away from the surface being cleaned. The further away you are the less the pressure will be on the surface being cleaned.
3. Adjust the spray to a wider angle.



## APPLYING CHEMICALS AND CLEANING SOLVENTS



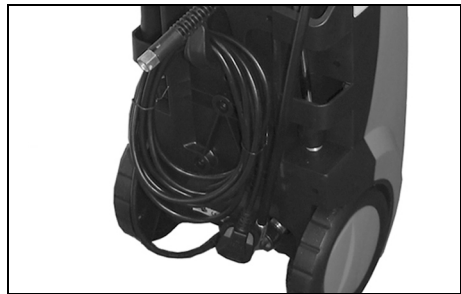
CAUTION: IF YOUR EYES COME INTO CONTACT WITH ANY CLEANING FLUIDS, RINSE THEM IMMEDIATELY WITH PLENTY OF FRESH, CLEAN WATER AND SEEK MEDICAL ADVICE IF REQUIRED.

1. Ensure the trigger is locked.
2. Remove the cap from the detergent container.
3. Fill the container with a suitable bio-degradable detergent.
4. Replace the cap.
5. Squeeze the trigger.
6. Pull the adjusting sleeve forward to set the required spray pressure.
7. Start washing.

## SHUTTING DOWN

When you have finished using the power washer, follow the procedure below to switch off and disconnect the unit:

1. Press the stop switch ('O').
2. Turn the mains water supply off at the tap.
  - NEVER turn the water off with the power washer running.
3. Release the pressure in the pump and hose by squeezing the trigger for a few seconds until no more water comes out of the nozzle.
4. Move the trigger lock to the locked position.
5. Disconnect the mains power supply and store the cable in its position on the rear of the machine.
6. Wind the hose onto the reel and store the spray gun/lance in the holder on the front of the power washer as shown on page 6.



---

# MAINTENANCE

---



**WARNING: THE MACHINE SHALL BE DISCONNECTED FROM THE POWER SUPPLY BY REMOVING THE PLUG DURING CLEANING OR MAINTENANCE AND WHEN REPLACING PARTS.**

---

## CLEANING THE NOZZLE

If the nozzle becomes partially clogged with foreign material such as dirt or limescale, excessive pressure may develop and the pump pressure will pulsate. Clean the nozzle immediately as follows:

1. Turn off the power washer and turn off the water supply.
2. Pull the trigger to relieve any water pressure.
3. Disconnect the lance from the spray gun.
4. Remove any obstructions by directing water supply into the end of the lance for 30 seconds to back flush loose particles.
5. Reconnect the lance to gun and turn on water supply.

## REMOVING THE SPRAY GUN FROM THE HOSE

The gun can be disconnected from the hose for cleaning or to unblock the spray gun/hose by disconnecting the connection using a 17 mm spanner.

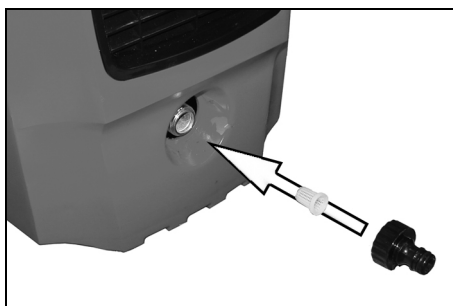
Pull the hose away from the spray gun.

## CLEANING THE WATER INLET FILTER

This filter should be checked periodically and cleaned if necessary.

1. Remove filter from the water inlet of the pump as shown.
2. Clean the filter by flushing both sides with water.
3. Replace the filter into the water inlet.
  - The tapered side faces inwards.

**NOTE:** Do not operate power washer without filter properly installed.



---

## SERVICING

---

All repairs and maintenance operations must be carried out by technically qualified personnel while disconnected from the power and water supplies.

Correct use and maintenance is necessary to guarantee the power washer's reliability and best performance.

Please only use the correct spare parts as supplied by your Clarke dealer.

### ANNUALLY

#### LIMESCALE

Periodically the pump should be checked for limescale buildup, dependant upon the hardness of the local water supply.

Please contact the CLARKE International Service Dept.

#### DE-COMMISSIONING THE PRODUCT



Should the product become completely unserviceable and require disposal, dispose of the product according to local regulations. Recycle unwanted materials instead of disposing of them as waste. All tools, accessories and packaging should be sorted, taken to a recycling centre and disposed of in a manner which is compatible with the environment.

### STORING THE POWER WASHER

1. Disconnect the high pressure hose and drain all water from the hose.
2. Make sure that the power washer has been thoroughly cleaned before storing it in a clean dry place.
3. Avoid storing the power washer at freezing temperatures.

## TROUBLESHOOTING

<b>PROBLEM</b>	<b>POSSIBLE CAUSE</b>	<b>SOLUTION</b>
No water delivery.	Water filter blocked.	See cleaning the water filter on page 13.
	Pump valves jammed.	Contact Clarke Service Department.
	Clogged lance nozzle.	Clean the nozzle.
Low or irregular pressure	Insufficient water supply.	Check connections.
	Pump taking in air.	Check connections.
	Detergent inlet sucking in air.	Check connections and that detergent supply is topped up.
	Water filter dirty.	Clean or replace.
	Worn out gaskets or valve components.	Contact Clarke Service Department for replacement.
	Exceeding the inlet water temperature.	Make sure the water supply is below 60 degrees.
	Damaged or worn out nozzle components.	Contact Clarke Service Department for replacement.
	Low Voltage.	Make sure the pressure washer is connected to a suitable power supply.
Machine is noisy.	Air intake worn out / dirty/ blocked valves. Excess water temperature.	Check air inlet. Contact Clarke Service Department. Reduce water temperature.
Motor suddenly stops.	Thermal protection has activated due to overheating.	Switch off the machine and wait until the unit has cooled down sufficiently.
Pressure drop.	Air in system.	Bleed system by quickly operating trigger several times. If necessary operate the machine briefly without the high pressure hose connected.
	Worn high pressure nozzle.	Renew nozzle.

Pressure fluctuations or pressure drop.	Shortage of water.	Turn water tap on fully.
	Water supply hose too long/ too narrow.	Use a 1/2" diameter water supply hose.
	No water due to clogged inlet filter.	Clean water inlet filter.
Oil leak.	Worn seals.	Contact your Clarke dealer.
Motor does not start when switched on.	Plug is not connected properly.	Check plug and lead and have them replaced by a qualified electrician if necessary.
	Mains fuse tripped/blown.	Renew fuse or reset.
Motor hums when trigger operated and does not start.	Mains voltage too low.	Have electrical connection checked.
	Incorrect diameter cable resulting in voltage drop.	Use correct diameter cable.
	Pump seals stuck.	Contact your Clarke dealer.
Motor cuts out - trigger open.	Motor protection switch has been activated due to overheating or motor overload.	Ensure supply voltage and unit voltage are equal. Switch off and allow to cool for at least three minutes.
	Nozzle partly clogged.	Clean using the supplied nozzle cleaning needle.
Additives are not being supplied.	Additive container empty.	Fill additive container.
	Lance not correctly set.	Put lance on low pressure setting.



## PRODUCT SPECIFICATIONS

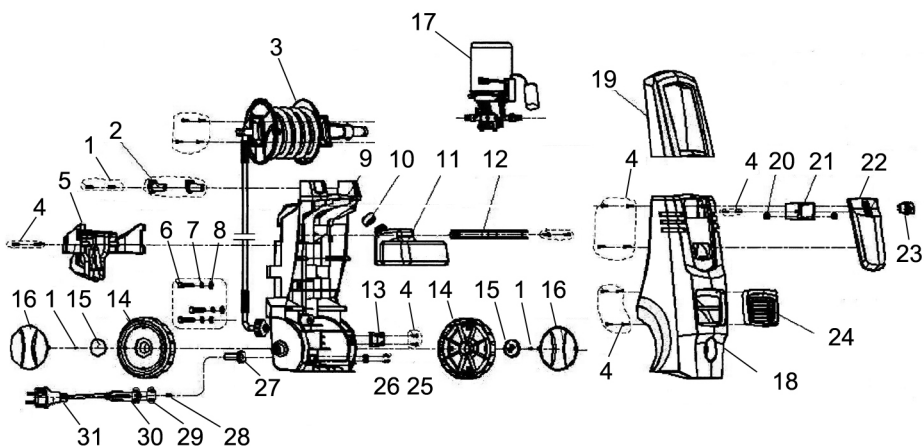
Model Number	JET 9000
Part Number	7333502
Voltage	230V/50Hz
Motor Input Power	2600 W
Duty Cycle	Continuous
Working pressure	123 bar
Maximum pump output pressure	200 bar
Maximum output flow rate	7.75 l/min (465 l/hr)
Maximum output temperature	40°C (104°F)
Maximum input temperature	0-40°C
Detergent tank capacity	2200 ml
Sound Pressure Level (L <sub>WA</sub> )	81
Sound power level (L <sub>WA</sub> )	94
Guaranteed sound power level (L <sub>WA</sub> )	98
Uncertainty Factor K	3.44
Dimensions (L x W x H)	305 x 328 x 806 mm
Weight	23.65 kg

## CONSUMABLES

A range of suitable hose, shampoo and traffic film remover are available from your Clarke dealer.



## PARTS LIST - FRAME & BODY



POS	DESCRIPTION	CODE	POS	DESCRIPTION	CODE
1	Self-tapping Screw	TMC9000FB01	17	Pump Assembly	TMC9000FB17
2	Handle Pin	TMC9000FB02	18	Front Cover	TMC9000FB18
3	Hose Reel	TMC9000FB03	19	Handle	TMC9000FB19
4	Self-tapping Screw	TMC9000FB04	20	Cable Sleeve	TMC9000FB20
5	Cable Hook	TMC9000FB05	21	Switch Holder	TMC9000FB21
6	Cap Screw	TMC9000FB06	22	Switch Panel	TMC9000FB22
7	Spring Gasket	TMC9000FB07	23	Power Switch	TMC9000FB23
8	Flat Gasket	TMC9000FB08	24	Air Outlet	TMC9000FB24
9	Base	TMC9000FB09	25	Self-tapping Screw	TMC9000FB25
10	Container Cap	TMC9000FB10	26	Cable Retainer	TMC9000FB26
11	Container	TMC9000FB11	27	Cable Gland	TMC9000FB27
12	Container Retainer	TMC9000FB12	28	Board Clip	TMC9000FB28
13	Capacitor Clamp	TMC9000FB13	29	Spring Clip	TMC9000FB29
14	Wheel	TMC9000FB14	30	Insulation Sleeve	TMC9000FB30
15	Wheel Retainer	TMC9000FB15	31	Power Cable	TMC9000FB31
16	Wheel Cover	TMC9000FB16	32	Spray Gun & Lance	TMC9000FB32

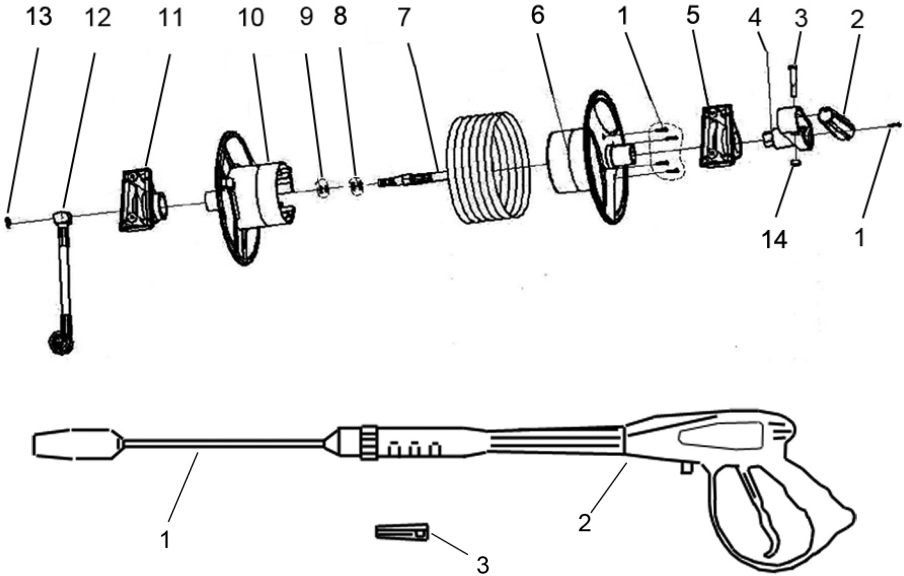


## PARTS LIST - INTERNAL COMPONENTS

POS	DESCRIPTION	CODE	POS	DESCRIPTION	CODE
1	Motor Winding Cover	TMC900001	27	Relief Valve	TMC900027
2	Motor Fan	TMC900002	27-1	Sealing Ring	TMC9000271
3	Induction Motor	TMC900003	27-2	Relief Valve Piston	TMC9000272
4	Terminal Box	TMC900004	27-3	Sealing Ring	TMC9000273
5	Capacitor/wire	TMC900005	27-4	Relief Valve Support	TMC9000274
5-1	Capacitor/wire	TMC9000051	27-5	Relief Valve Spring	TMC9000275
5-2	Insulation Sleeve	TMC9000052	27-6	Sealing Ring	TMC9000276
5-3	Clip	TMC9000053	27-7	Valve Seat Cover	TMC9000277
6	Main Switch Wire	TMC900006	27-8	Valve Connect Screw	TMC9000278
6-1	Main Switch Wire	TMC9000061	27-9	Safety Valve Stem	TMC9000279
6-2	Insert Spring	TMC9000062	27-10	Auto Stop Spring	TMC90002710
6-3	Earth Terminal	TMC9000063	27-11	Spring Press	TMC90002711
7	Washer	TMC900007	27-12	Sealing Ring	TMC90002712
8	Spring Washer	TMC900008	27-13	Relief Valve Bonnet	TMC90002713
9	Self tapping Screw	TMC900009	27-14	Switch Box	TMC90002714
10	Terminal Box Cap	TMC900010	27-15	Contact Point	TMC90002715
11	Cam	TMC900011	27-16	Micro Switch	TMC90002716
12	Spring Washer	TMC900012	27-17	Micro Switch Wire	TMC90002717
13	Hex Screw	TMC900013	27-18	Insert Spring	TMC90002718
14	Washer	TMC900014	27-19	Insulation Sleeve	TMC90002719
15	Needle Bearing	TMC900015	27-20	Switch Box Cover	TMC90002720
16	Bearing Washer	TMC900016	27-21	Self Tapping Screw	TMC90002721
17	Spring Seat	TMC900017	27-22	Sealing Ring	TMC90002722
18	Plunger	TMC900018	27-23	Relief Valve Bonnet	TMC90002723
19	Plunger Spring	TMC900019	28	Valve Body	TMC900028
20	Seal Ring	TMC900020	29	Oil Seal	TMC900029
21	Seal Ring	TMC900021	30	Guide	TMC900030
22	Inlet Connector	TMC900022	31	Water Seal	TMC900031
23	Inlet Connector Seal	TMC900023	32	Spring Washer	TMC900032
24	Filter Core	TMC900024	33	Hex Screw	TMC900033
25	Inlet Hose	TMC900025	42	Main Valve	TMC900042
26	Sealing Ring	TMC900026	42-1	Main Valve Cover	TMC9000421

34	Hex Screw Insert	TMC900034	42-2	Main Valve Seat	TMC9000422
35	Pump	TMC900035	43	Hose	TMC900043
36	Spring Washer	TMC900036	44	Nozzle	TMC900044
37	Hex Screw	TMC900037	45	Outlet Connector	TMC900045
38	Hex Screw	TMC900038	46	Hex Screw Insert	TMC900046
39	Sealing Ring	TMC900039	47	Spring	TMC900047
40	One-way Valve	TMC900040	48	Steel Ball	TMC900048
40-1	One-way Valve Cover	TMC9000401	49	Sealing Ring	TMC900049
40-2	One-way Valve Core	TMC9000402	50	Sealing Ring	TMC900050
40-3	One-way Valve Spring	TMC9000403	51	Suction Connector	TMC900051
40-4	One-way Valve Seat	TMC9000404	52	Sealing Ring	TMC900052
41	One-way Valve Insert	TMC900041			

# HOSE REEL ASSEMBLY



No	DESCRIPTION	CODE	No	DESCRIPTION	CODE
1	Screw	TMC9000HOSE01	8	Seal Ring	TMC9000HOSE08
2	Crank Handle	TMC9000HOSE02	9	Seal Ring	TMC9000HOSE09
3	Bolt	TMC9000HOSE03	10	Hose Spool (L/H)	TMC9000HOSE10
4	Crank Handle Hub	TMC9000HOSE04	11	Support Bracket	TMC9000HOSE11
5	Support Bracket	TMC9000HOSE05	12	HP Hose Connector	TMC9000HOSE12
6	Hose Spool (right)	TMC9000HOSE06	13	Retaining Clip	TMC9000HOSE13
7	High Pressure Hose	TMC9000HOSE07	14	Cover Plug	TMC9000HOSE14

No	DESCRIPTION	CODE	No	DESCRIPTION	CODE
1	Lance Assy	TMCFQ301	3	Adaptor	TMC9000ADAPTOR
2	Gun Assembly	TMCFQ302			

# DECLARATION OF CONFORMITY



**Clarke**<sup>®</sup>  
INTERNATIONAL

Hemnal Street, Esping, Essex CM16 4UG

## DECLARATION OF CONFORMITY

This is an important document and should be retained.

**Product Description:** Power Washer  
**Model number(s):** JET 9000  
**Serial / batch Number:** N/A  
**Date of Issue:** 18/07/2013  
**Notified Body:** TÜV Rheinland LGA Products GmbH  
Tilgstrasse 2  
90431 Nürnberg  
Germany

**Technical Documentation Holder:** A.R. Pond  
Clarke International  
2a Strouland Road  
London E10 7RB  
UK

**Conformity Assessment Procedure:** to 2000/14/EC Annex V  
**Manufacturer:** Clarke International  
**Noise Related Value:** 420 L/h  
**Measured Sound Power Level:** 94 dB  
**Guaranteed Sound Power Level:** 96 dB

JET 9000 Pressure washer D O C

Page 1 of 2



**Clarke**<sup>®</sup>  
INTERNATIONAL

Hemnal Street, Esping, Essex CM16 4UG

## DECLARATION OF CONFORMITY

This is an important document and should be retained.

**We hereby declare that this product(s) complies with the following directive(s):**  
2004/108/EC Electromagnetic Compatibility Directive.  
2006/42/EC Machinery Directive.  
2011/65/EU Restriction of Hazardous substances  
2000/14/EC Noise Emissions Directive, (amended by 2005/68/EC).

**The following standards have been applied to the product(s):**  
EN 55014-2:1997 +A1:2001 +A2:2008, EN 61000-3-2:2006 +A2:2009, EN 61000-3-11:2000,  
EN 55014-1:2006 +A1:2009, EN 60335-2-79:2009, EN 62233:2008, EN 60335-1:2002 +A13:2008,  
EN ISO 11203:2009, EN ISO 3744:2010, EN ISO 4871:2009, EN 60335-2-79:2012.

The technical documentation required to demonstrate that the product(s) meet(s) the requirements of the above mentioned directive(s) has been compiled and is available for inspection by the relevant enforcement authorities.

The CE mark was first applied in: 2011

Signed:

J.A. Clarke  
Director

JET 9000 Pressure washer D O C

Page 2 of 2

# A SELECTION FROM THE VAST RANGE OF

# Clarke®

## QUALITY PRODUCTS

### AIR COMPRESSORS

From DIY to industrial, Plus air tools, spray guns and accessories.

### GENERATORS

Prime duty or emergency standby for business, home and leisure.

### POWER WASHERS

Hot and cold, electric and engine driven - we have what you need

### WELDERS

Mig, Arc, Tig and Spot. From DIY to auto/industrial.

### METALWORKING

Drills, grinders and saws for DIY and professional use.

### WOODWORKING

Saws, sanders, lathes, mortisers and dust extraction.

### HYDRAULICS

Cranes, body repair kits, transmission jacks for all types of workshop use.

### WATER PUMPS

Submersible, electric and engine driven for DIY, agriculture and industry.

### POWER TOOLS

Angle grinders, cordless drill sets, saws and sanders.

### STARTERS/CHARGERS

All sizes for car and commercial use.



**PARTS & SERVICE: 020 8988 7400**

**E-mail: [Parts@clarkeinternational.com](mailto:Parts@clarkeinternational.com) or [Service@clarkeinternational.com](mailto:Service@clarkeinternational.com)**

**SALES: UK 01992 565333 or Export 00 44 (0)1992 565335**

**Clarke® INTERNATIONAL** Hemnall Street, Epping, Essex CM16 4LG  
[www.clarkeinternational.com](http://www.clarkeinternational.com)