

# Charmer®



WARNING: Do not use the machine without reading this manual

## POWER WASHER

MODEL NO: JET 8000

PART NO: 7333500

## OPERATION & MAINTENANCE INSTRUCTIONS



GC0913

---

## INTRODUCTION

---

Thank you for purchasing this CLARKE Power Washer.

The machine has been designed to use hot or cold water to clean any surfaces which can stand the force of the high pressure water jet and the action of the detergents used.

The machine must only be used for the purpose for which it was designed.

Before attempting to use this product, please read this manual thoroughly and follow the instructions carefully. In doing so you will ensure the safety of yourself and that of others around you, and you can look forward to your purchase giving you long and satisfactory service.

---

## GUARANTEE

---

This product is guaranteed against faulty manufacture for a period of 12 months from the date of purchase. Please keep your receipt which will be required as proof of purchase.

This guarantee is invalid if the product is found to have been abused or tampered with in any way, or not used for the purpose for which it was intended.

Faulty goods should be returned to their place of purchase, no product can be returned to us without prior permission.

This guarantee does not effect your statutory rights.

---

## LIST OF CONTENTS

---

The following items should be supplied in the carton. If any parts are missing or damaged, please see your Clarke dealer where you purchased the machine.

1 x Power Washer
1 x Gun Assembly
1 x Lance c/w fitted Pencil-Jet / Fan - High / Low Nozzle
1 x Hose Assembly on integral Hose-Reel
1 x Inlet Hose Adaptor
1 x Instruction Manual
1 x Accessory Adaptor

---

## GENERAL SAFETY RULES

---

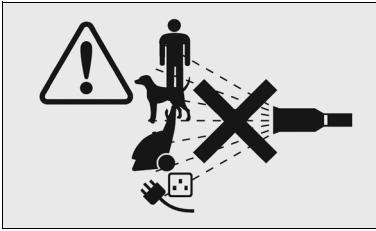


**WARNING: WATER AT HIGH PRESSURE CAN BE DANGEROUS AND CAN CAUSE DAMAGE IF THE OPERATOR IS CARELESS. NEVER ALLOW ANYONE TO OPERATE THIS MACHINE UNLESS THEY ARE FAMILIAR WITH THE SAFETY PRECAUTIONS.**

---

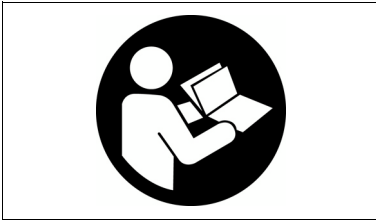
1. High pressure water jets can be dangerous if subject to misuse. They must not be directed at animals or people.
2. **NEVER** allow children or untrained personnel to use this product.
3. **NEVER** operate the power washer with any covers removed.
4. **NEVER** attempt any electrical or mechanical repairs to this power washer. Always refer to your Clarke dealer.
5. **NEVER** supply any liquid other than water to the water inlet.
6. Never use the detergent facility to introduce flammable liquids/solvents, e.g. paint thinners, petrol, oil due to risk of explosion.
7. **ALWAYS** release any residual pressure in the machine by turning off the water supply and operating the trigger, before disconnecting the hose.
8. **ALWAYS** keep the pressure washer itself dry and clear of water spray.
9. Never direct the spray jet at the pressure washer itself or any other electrical equipment.
10. **ALWAYS** wear protective clothing, safety shoes and safety glasses. Loose particles & other debris may be propelled at high speed by the water jet.
11. **ALWAYS** hold the spray gun firmly & expect the gun to 'kick' when starting.
12. **ALWAYS** disconnect from the water supply and ensure the machine is completely drained when not in use. Store in a cool dry location.
13. Only use chemical cleaning agents (detergents), that are approved for pressure washers. CLARKE Traffic Film Remover or CLARKE Wash and Wax (available from your dealer), are recommended.
14. **ALWAYS** disconnect from the electrical power supply and remove the plug from the socket before carrying out any maintenance.
15. **ONLY** use original spare parts from the Clarke service department.
16. High pressure hoses, fittings and couplings are important for the safety of the machine. Use only hoses, fittings and couplings recommended by the manufacturer.
17. **NEVER** use the pressure washer if the power cable or other important parts of the power washer are damaged.
18. If an extension cable is used, the cable and plug must be of watertight construction. Inadequate extension cables can be dangerous.

## SAFETY SYMBOLS



**WARNING:** Do not discharge the water spray at persons or animals. Keep clear of nozzle.

**WARNING:** Never direct spray toward any electrical device or electrical outlet.



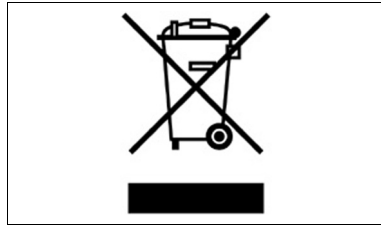
**Read Instructions before use.**



**Wear Eye Protection**



**Wear Gloves**



**Equipment covered by the European WEE (Waste Electrical/Electronic) Directive.**

# ELECTRICAL CONNECTIONS



**WARNING: READ THESE ELECTRICAL SAFETY INSTRUCTIONS THOROUGHLY BEFORE CONNECTING THE PRODUCT TO THE MAINS SUPPLY.**

Before switching the product on, make sure that the voltage of your electricity supply is the same as that indicated on the rating plate. This product is designed to operate on 230VAC 50Hz. Connecting it to any other power source may cause damage.

This product may be fitted with a non-rewireable plug. If it is necessary to change the fuse in the plug, the fuse cover must be refitted. If the fuse cover becomes lost or damaged, the plug must not be used until a suitable replacement is obtained.

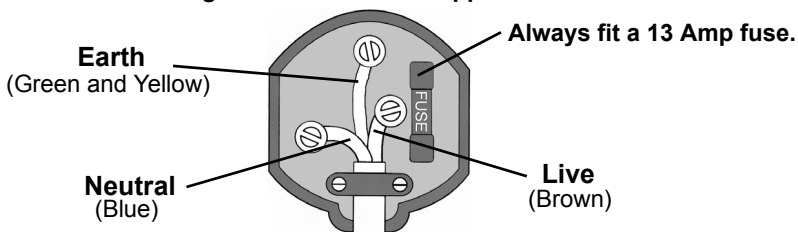
If the plug has to be changed because it is not suitable for your socket, or due to damage, it should be cut off and a replacement fitted, following the wiring instructions shown below. The old plug must be disposed of safely, as insertion into a mains socket could cause an electrical hazard.



**WARNING! The wires in the power cable of this product are coloured in accordance with the following code:  
Blue = Neutral    Brown = Live    Yellow and Green = Earth**

- The wire which is coloured **Blue** must be connected to the terminal which is marked **N** or coloured **Black**.
- The wire which is coloured **Brown** must be connected to the terminal which is marked **L** or coloured **Red**.
- The wire which is coloured **Yellow and Green** must be connected to the terminal which is marked **E** ( $\perp$ ) or coloured **Green**.

**Plug must be BS1363/A approved.**

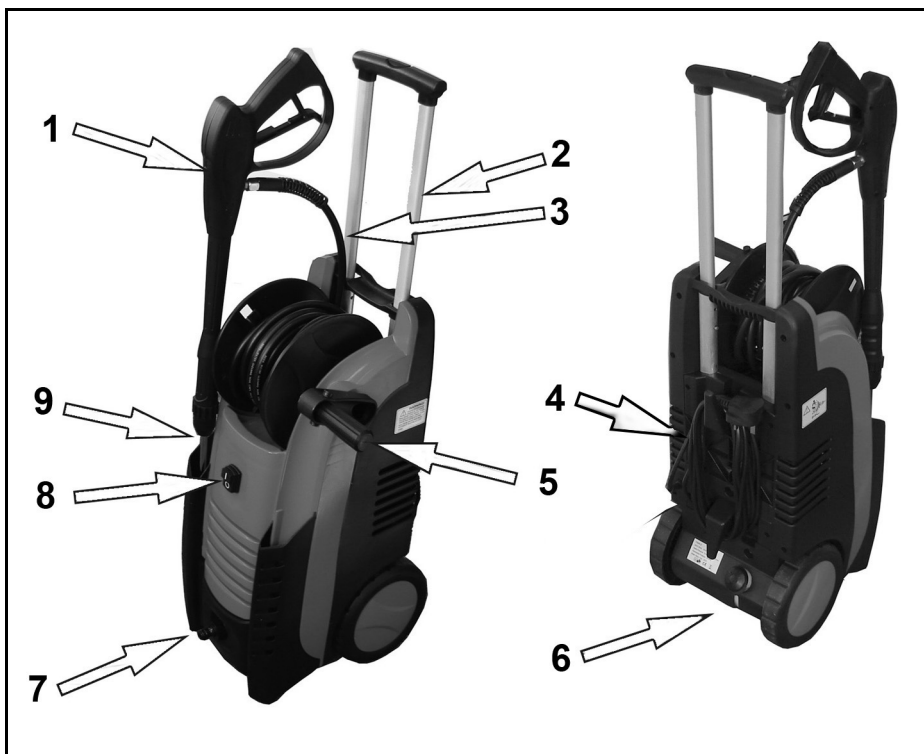


**Ensure that the outer sheath of the cable is firmly held by the clamp**

**WE STRONGLY RECOMMEND THAT THIS MACHINE IS CONNECTED TO THE MAINS SUPPLY VIA A RESIDUAL CURRENT DEVICE (RCD)**

If in any doubt, consult a qualified electrician. DO NOT attempt any repairs yourself.

# OVERVIEW



1	Spray Gun Assembly	6	Detergent Container
2	Telescopic Handle	7	Mains Water Inlet
3	High pressure Hose	8	On/OFF Switch
4	Power Cable	9	Lance
5	Reel Handle		

## BEFORE USE

Unpack your power washer and check to ensure all the items listed on page 2 are present.

### UNFOLDING THE HOSE REEL HANDLE

1. Open the reel handle from its folded position before use.
2. Release the hose from the retaining clip on the hose reel, then pull the hose from the reel to unwind whatever length is required.

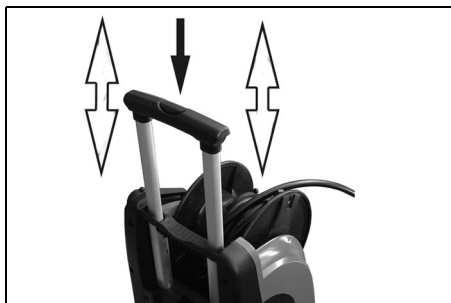
- Winding the handle clockwise will reduce the length of the hose.



- If the spray gun/lance assembly is not attached, the hose can be secured in the retaining clip when the hose is re-wound.

### USING THE CARRYING HANDLE

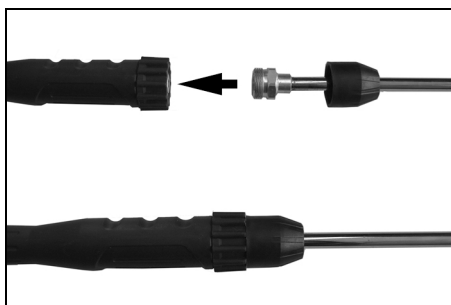
1. Press and hold the centre button on the telescopic handle to unlock it.
- This will enable the handle to extend and retract.



### ASSEMBLING THE LANCE

The lance must be fitted to the gun assembly before use.

1. Assemble by screwing the end of the lance into the gun assembly.
2. Tighten the locking nut using a 22 mm spanner.
3. Slide the plastic cap into position.



## CONNECTING THE GUN TO THE HOSE

Connect the gun to the hose by screwing on the connector and tightening with a 17 mm spanner.



## CONNECTING THE MAINS WATER SUPPLY

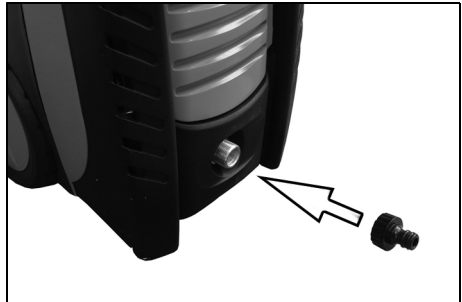
**NOTE:** Always follow any regulations of your local water supplier.

1. Screw the inlet adaptor to the water inlet as shown.
2. Connect the mains water supply hose to the inlet adaptor. A standard garden hose is suitable.

- It is recommended to use a reinforced hose with an inner diameter of at least 10 mm available from your CLARKE dealer.

- Ensure the water connection is secure.

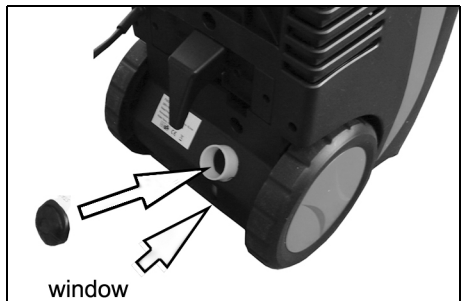
**NOTE:** The water source must provide a minimum of 6.6 litres per minute at not more than 40°C.



## FILLING WITH DETERGENT

If you intend to use detergent:

1. Remove the detergent filler cap located at the rear of the pressure washer and fill with detergent.
  - The detergent level should be visible through the window in the back of the machine. (max capacity 500ml)
2. Replace cap before use.





3. Only use detergents recommended for use with pressure washers, such as CLARKE Traffic Film Remover which is a powerful 'low foaming' agent for car cleaning, patio cleaning etc., or CLARKE Wash & Wax, both available from your CLARKE dealer.

DESCRIPTION	SIZE	PART NUMBER
Car Wash & Wax Shampoo	5 Litre	3050815
Concentrated Traffic Film Remover	5 Litre	3050821
Concentrated Traffic Film Remover	25 Litre	3050820
Ready To Use Traffic Film Remover	5 Litre	3050818
Ready To Use Traffic Film Remover	25 Litre	3050819

- The use of unsuitable cleaning agents may adversely affect the safety of the machine. Before use, refer to correct operating temperatures on page 17.

## ACCESSORIES

A range of accessories are available from your Clarke dealer including:



Patio  
Cleaner  
(7310003)



7 Piece  
Accessory Kit  
(7310004)

(require the use of the adaptor supplied with this machine)

Accessories with bayonet style couplings such as those shown can be fitted to the hose by means of the adaptor supplied.

# OPERATION

## GETTING STARTED

1. Ensure that the water supply is correctly connected and turned on.



**WARNING: FAILURE TO TURN ON THE WATER FULLY COULD CAUSE DAMAGE TO THE POWER WASHER INTERNAL COMPONENTS.**

**WARNING: DO NOT USE THE POWER WASHER IF THE SUPPLY CABLE OR IMPORTANT PARTS OF THE MACHINE ARE DAMAGED, E.G. SAFETY DEVICES, HIGH PRESSURE HOSES, TRIGGER**

**WARNING: WE RECOMMEND THAT THIS MACHINE IS CONNECTED TO THE MAINS SUPPLY VIA A RESIDUAL CURRENT DEVICE (RCD)**

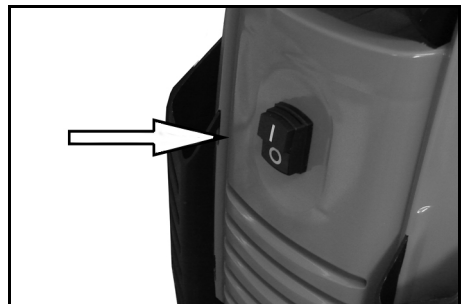
2. Plug the power cable into the mains supply.
3. Release the trigger lock.
  - The pressure washer is now ready for use.



4. Press the start switch ('I').
5. Pull the trigger.

**NOTE:** When the trigger is pulled the pressure of water will cause the lance/gun assembly to kick back suddenly.

6. When using the power washer for the first time, let it run for a few moments so that any air bubbles or other impurities are discharged.



7. Release the trigger to stop the water flow.
  - This pressure washer is fitted with an auto stop system to protect the motor during use.
  - When the trigger is released, the motor will stop. When the trigger is squeezed the motor will start up again.

## ADJUSTING THE SPRAY

The nozzle is adjustable to allow you to adjust the spray from a narrow jet of water to a wide spray.

To adjust the nozzle, proceed as follows:

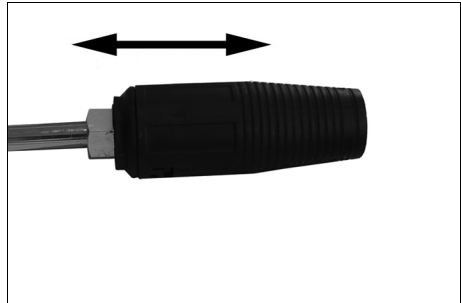
1. Hold the shaft of the lance in one hand.
2. Twist the nozzle with the other hand.
3. To vary the spray between narrow and wide, turn the nozzle anticlockwise through 180°.



## ADJUSTING THE PRESSURE

There are three ways to adjust the pressure of the water:

1. Slide the nozzle forwards to lower the pressure.
2. Back away from the surface being cleaned. The further away you are the less the pressure will be on the surface being cleaned.
3. Adjust the spray to a wider angle.



## APPLYING CHEMICALS AND CLEANING SOLVENTS



CAUTION: IF YOUR EYES COME INTO CONTACT WITH ANY CLEANING FLUIDS, RINSE THEM IMMEDIATELY WITH PLENTY OF FRESH, CLEAN WATER AND SEEK MEDICAL ADVICE IF REQUIRED.

1. Ensure the trigger is locked.
2. Remove the cap from the detergent container.
3. Fill the container with a suitable bio-degradable detergent.
4. Replace the cap.
5. Squeeze the trigger.
6. Pull the adjusting sleeve forward to set the required spray pressure.
7. Start washing.

## SHUTTING DOWN

When you have finished using the power washer, follow the procedure below to switch off and disconnect the unit:

1. Press the stop switch ('O').
2. Turn the mains water supply off at the tap.
  - NEVER turn the water off with the power washer running.
3. Release the pressure in the pump and hose by squeezing the trigger for a few seconds until no more water comes out of the nozzle.
4. Move the trigger lock to the locked position.
5. Disconnect the mains power supply and store the cable in its position on the rear of the machine.
6. Wind the hose onto the reel and store the spray gun/lance in the holder on the front of the power washer as shown on page 6.



---

# MAINTENANCE

---



**WARNING: THE MACHINE SHALL BE DISCONNECTED FROM THE POWER SUPPLY BY REMOVING THE PLUG DURING CLEANING OR MAINTENANCE AND WHEN REPLACING PARTS.**

---

## CLEANING THE NOZZLE

If the nozzle becomes partially clogged with foreign material such as dirt or limescale, excessive pressure may develop and the pump pressure will pulsate. Clean the nozzle immediately as follows:

1. Turn off the power washer and turn off the water supply.
2. Pull the trigger to relieve any water pressure.
3. Disconnect the lance from the spray gun.
4. Remove any obstructions by directing water supply into the end of the lance for 30 seconds to back flush loose particles.
5. Reconnect the lance to gun and turn on water supply.

## REMOVING THE SPRAY GUN FROM THE HOSE

The gun can be disconnected from the hose for cleaning or to unblock the spray gun/hose by disconnecting the connection using a 17 mm spanner.

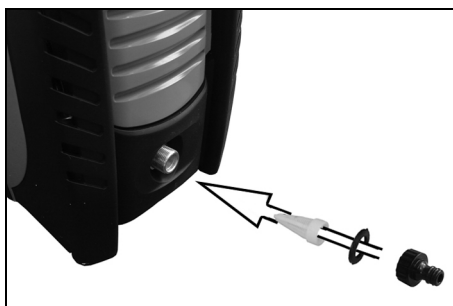
Pull the hose away from the spray gun.

## CLEANING THE WATER INLET FILTER

This filter should be checked periodically and cleaned if necessary.

1. Remove filter from the water inlet of the pump as shown.
2. Clean the filter by flushing both sides with water.
3. Replace the filter into the water inlet.
  - The tapered side faces inwards.

**NOTE:** Do not operate power washer without filter properly installed.



---

## SERVICING

---

All repairs and maintenance operations must be carried out by technically qualified personnel while disconnected from the power and water supplies.

Correct use and maintenance is necessary to guarantee the power washer's reliability and best performance.

Please only use the correct spare parts as supplied by your Clarke dealer.

### ANNUALLY

#### LIMESCALE

Periodically the pump should be checked for limescale buildup, dependant upon the hardness of the local water supply.

Please contact the CLARKE International Service Dept.

#### DE-COMMISSIONING THE PRODUCT



Should the product become completely unserviceable and require disposal, dispose of the product according to local regulations. Recycle unwanted materials instead of disposing of them as waste. All tools, accessories and packaging should be sorted, taken to a recycling centre and disposed of in a manner which is compatible with the environment.

### STORING THE POWER WASHER

1. Disconnect the high pressure hose and drain all water from the hose.
2. Make sure that the power washer has been thoroughly cleaned before storing it in a clean dry place.
3. Avoid storing the power washer at freezing temperatures.

## TROUBLESHOOTING

<b>PROBLEM</b>	<b>POSSIBLE CAUSE</b>	<b>SOLUTION</b>
No water delivery.	Water filter blocked.	See cleaning the water filter on page 13.
	Pump valves jammed.	Contact Clarke Service Department.
	Clogged lance nozzle.	Clean the nozzle.
Low or irregular pressure	Insufficient water supply.	Check connections.
	Pump taking in air.	Check connections.
	Detergent inlet sucking in air.	Check connections and that detergent supply is topped up.
	Water filter dirty.	Clean or replace.
	Worn out gaskets or valve components.	Contact Clarke Service Department for replacement.
	Exceeding the inlet water temperature.	Make sure the water supply is below 40 degrees.
	Damaged or worn out nozzle components.	Contact Clarke Service Department for replacement.
	Low Voltage.	Make sure the pressure washer is connected to a suitable power supply.
Machine is noisy.	Air intake worn out / dirty/ blocked valves. Excess water temperature.	Check air inlet. Contact Clarke Service Department. Reduce water temperature.
Motor suddenly stops.	Thermal protection has activated due to overheating.	Switch off the machine and wait until the unit has cooled down sufficiently.
Pressure drop.	Air in system.	Bleed system by quickly operating trigger several times. If necessary operate the machine briefly without the high pressure hose connected.
	Worn high pressure nozzle.	Renew nozzle.

Pressure fluctuations or pressure drop.	Shortage of water.	Turn water tap on fully.
	Water supply hose too long/ too narrow.	Use a 1/2" diameter water supply hose.
	No water due to clogged inlet filter.	Clean water inlet filter.
Oil leak.	Worn seals.	Contact your Clarke dealer.
Motor does not start when switched on.	Plug is not connected properly.	Check plug and lead and have them replaced by a qualified electrician if necessary.
	Mains fuse tripped/blown.	Renew fuse or reset.
Motor hums when trigger operated and does not start.	Mains voltage too low.	Have electrical connection checked.
	Incorrect diameter cable resulting in voltage drop.	Use correct diameter cable.
	Pump seals stuck.	Contact your Clarke dealer.
Motor cuts out - trigger open.	Motor protection switch has been activated due to overheating or motor overload.	Ensure supply voltage and unit voltage are equal. Switch off and allow to cool for at least three minutes.
	Nozzle partly clogged.	Clean using the supplied nozzle cleaning needle.
Additives are not being supplied.	Additive container empty.	Fill additive container.
	Lance not correctly set.	Put lance on low pressure setting.



## PRODUCT SPECIFICATIONS

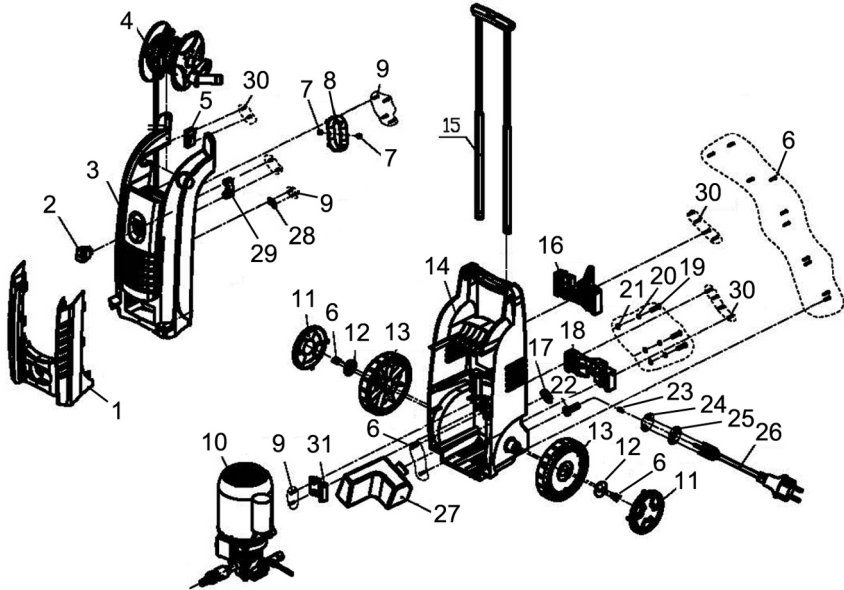
Model Number	JET 8000
Part Number	7333500
Voltage	230V/50Hz
Motor Input Power	2400 W
Duty Cycle	Continuous
Working pressure	108 bar
Maximum pump output pressure	180 bar (2610 psi)
Maximum output flow rate	6.6 l/min (400 l/hr)
Maximum output temperature	40°C (104°F)
Maximum input temperature	0-40°C
Detergent tank capacity	500 ml
Sound Pressure Level ( $L_{WA}$ )	78 dB
Sound power level ( $L_{WA}$ )	91 dB
Guaranteed sound power level ( $L_{WA}$ )	93 dB
Uncertainty Factor K	2.19
Vibration	1.0 m/s
Uncertainty Factor K	0.15
Dimensions (L x W x H)	280 x 348 x 640 mm
Weight	18.35 kg

## CONSUMABLES

A range of suitable hose, shampoo and traffic film remover are available from your Clarke dealer.

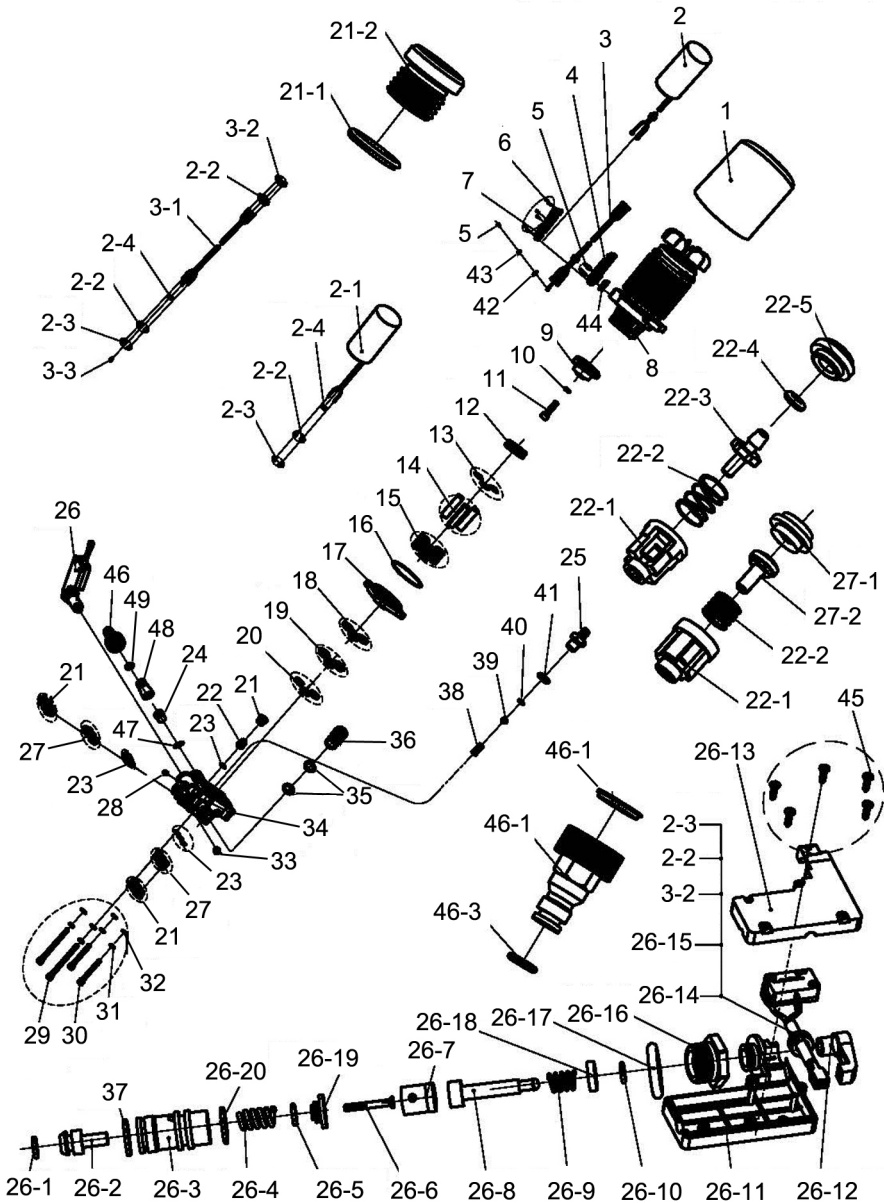


# PARTS LIST - FRAME & BODY



POS	DESCRIPTION	CODE	POS	DESCRIPTION	CODE
1	Lance Holder	TMC8000FB01	16	Top Cable Holder	TMC8000FB16
2	On/Off Switch	TMC8000FB02	17	Detergent Tank Plug	TMC8000FB17
3	Front Cover	TMC8000FB03	18	Lower Cable Holder	TMC8000FB18
4	Hose Reel Assembly	TMC8000FB04	19	Bolt	TMC8000FB19
5	Left Clamp	TMC8000FB05	20	Spring Washer	TMC8000FB20
6	Screw st 4.2 x 20	TMC8000FB06	21	Flat Washer	TMC8000FB21
7	Rubber Grommet	TMC8000FB07	22	Cable Protector	TMC8000FB22
8	Box Cover	TMC8000FB08	23	Copper E-Ring	TMC8000FB23
9	Screw st 2.9 x 14	TMC8000FB09	24	Spring	TMC8000FB24
10	Pump Assembly	TMC8000FB10	25	Microswitch Conn.	TMC8000FB25
11	Wheel Cover Plate	TMC8000FB	26	Power Cable/Plug	TMC8000FB26
12	Retaining Disc	TMC8000FB12	27	Detergent Bottle	TMC8000FB27
13	Transport Wheel	TMC8000FB13	28	Cable Clamp	TMC8000FB28
14	Body Moulding	TMC8000FB14	29	Left Clamp	TMC8000FB29
15	Telescopic Handle	TMC8000FB15	30	Screw st 4.2 x 16	TMC8000FB30

# PARTS LIST - INTERNAL COMPONENTS

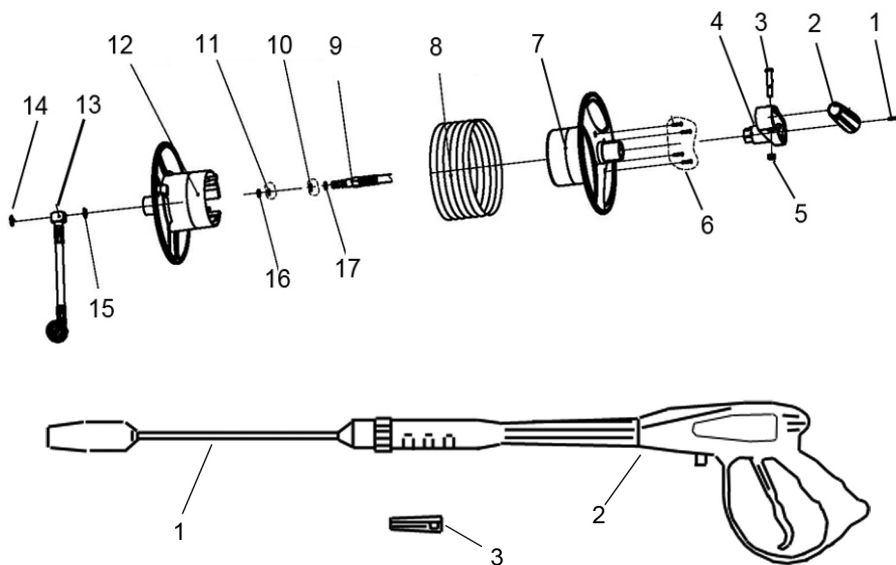


## PARTS LIST - INTERNAL COMPONENTS

POS	DESCRIPTION	CODE	POS	DESCRIPTION	CODE
1	Motor Cover	TMC800001	22-2	Check Valve Spring	TMC8000222
2	Capacitor (assy)	TMC800002	22-3	General Valve Core	TMC8000223
2-1	Connecting Cable	TMC8000021	22-4	Seal Ring	TMC8000224
2-2	Insulating Sheath	TMC8000022	22-5	General Valve Cover	TMC8000225
2-3	E-Rings	TMC8000023	23	Seal Ring	TMC800023
2-4	Protecting Sheath	TMC8000024	24	Filter Core	TMC800024
3	Connecting Wire	TMC800003	25	Compression Joint	TMC800025
3-1	Connecting Wire	TMC8000031	26	Relief Valve	TMC800026
3-2	Spring	TMC8000032	26-1	Sealing Ring	TMC8000261
3-3	Earth Terminal	TMC8000033	26-2	Relief Valve Piston	TMC8000262
4	Motor Terminal	TMC800004	26-3	Relief Valve Support	TMC8000263
5	Screw	TMC800005	26-4	Relief Valve Spring	TMC8000264
6	Screw	TMC800006	26-5	Sealing Ring	TMC8000265
7	Terminal Cover	TMC800007	26-6	Relief V. Coupling scr	TMC8000266
8	Induction Motor	TMC800008	26-7	Relief Valve Sheath	TMC8000267
9	Cam	TMC800009	26-8	Safety Valve Stem	TMC8000268
10	Spring Washer	TMC800010	26-9	Auto stop Spring	TMC8000269
11	Socket hd Screw	TMC800011	26-10	Sealing Ring	TMC80002610
12	Thrust Bearing	TMC800012	26-11	Switch Box	TMC80002611
13	Spring Cotter Pin	TMC800013	26-12	Contact Breaker Assy	TMC80002612
14	Plunger	TMC800014	26-13	Switch Box Cover	TMC80002613
15	Spring	TMC800015	26-14	Pressure Switch	TMC80002614
16	O-Ring	TMC800016	26-15	Connecting Wires	TMC80002615
17	Plunger Shelf	TMC800017	26-16	Relief Valve Bonnet	TMC80002616
18	Oil Seal	TMC800018	26-17	Sealing Ring	TMC80002617
19	Guide band	TMC800019	26-18	Spring Comp.Ring	TMC80002618
20	Y-section Water Seal	TMC800020	26-19	Pedestal Cover	TMC80002619
21	Check Valve Bolt	TMC800021	26-20	Sealing Ring	TMC80002620
21-1	Sealing Ring	TMC8000211	27	Check Valve	TMC800027
21-2	Check Valve Bolt	TMC8000212	27-1	Single Valve cap	TMC8000271
22	General Valve	TMC800022	27-2	Check Valve Core	TMC8000272
22-1	Check Valve Support	TMC8000221	28	Socket Head Plug	TMC800028

29	Socket Cap Screw	TMC800029	41	Sealing Ring	TMC800041
30	Socket Cap Screw	TMC800030	42	Spring Gasket	TMC800042
31	Plain Washer	TMC800031	43	Locking Washer	TMC800043
32	Spring Washer	TMC800032	44	Oil Box Gasket	TMC800044
33	Socket Head Plug	TMC800033	45	Screw	TMC800045
34	Pump	TMC800034	46	Inlet Connector	TMC800046
35	Sealing Ring	TMC800035	46-1	Inlet Conn. Gasket	TMC8000461
36	Nozzle	TMC800036	46-2	Inlet Connector	TMC8000462
37	Sealing Ring	TMC800037	46-3	Sealing Ring	TMC8000463
38	Compression Spring	TMC800038	47	Sealing Ring	TMC800047
39	Steel Ball	TMC800039	48	Connector	TMC800048
40	Sealing Ring	TMC800040			

# HOSE REEL & LANCE ASSEMBLIES



POS	DESCRIPTION	CODE	POS	DESCRIPTION	CODE
1	Screw	TMC8000HOSE01	10	Seal Ring	TMC8000HOSE10
2	Crank Handle	TMC8000HOSE02	11	Seal Ring	TMC8000HOSE11
3	Bolt	TMC8000HOSE03	12	Hose Spool (left)	TMC8000HOSE12
4	Crank Handle Hub	TMC8000HOSE04	13	HP Hose Connector	TMC8000HOSE13
5	Cover	TMC8000HOSE05	14	Retaining Clip	TMC8000HOSE14
6	Screws	TMC8000HOSE06	15	Retaining Clip	TMC8000HOSE15
7	Hose Spool (right)	TMC8000HOSE07	16	PTFE Back Cushion A	TMC8000HOSE16
8	High Pressure Hose	TMC8000HOSE08	17	PTFE Back Cushion B	TMC8000HOSE17
9	Hose Connector	TMC8000HOSE09			

POS	DESCRIPTION	CODE	POS	DESCRIPTION	CODE
1	Lance Assy	TMCFQ301	3	Adaptor	TMC8000ADAPTOR
2	Gun Assembly	TMCFQ302			

# DECLARATION OF CONFORMITY



Hemmel Street, Epping, Essex CM16 4LG

## DECLARATION OF CONFORMITY

This is an important document and should be retained.

**Product Description:** Power Washer  
**Model number(s):** JET 8000  
**Serial / batch Number:** N/A  
**Date of Issue:** 18/07/2013  
**Notified Body:** TÜV Rheinland LGA Products GmbH  
Thlystraße 2  
90431 Nürnberg  
Germany

### Technical Documentation Holder:

A. R. Poord  
Clarke International  
2a Shrubland Road  
London E10 7RB  
UK

**Conformity Assessment Procedure:** to 2000/14/EC Annex V  
**Manufacturer:** Clarke International  
**Noise Related Value:** 390 L/h  
**Measured Sound Power Level:** 91 dB  
**Guaranteed Sound Power Level:** 93 dB

JET 8000 Pressure washer D O C

Page 1 of 2



Hemmel Street, Epping, Essex CM16 4LG

## DECLARATION OF CONFORMITY

This is an important document and should be retained.

**We hereby declare that this product(s) complies with the following directive(s):**  
2004/108/EC Electromagnetic Compatibility Directive.  
2006/42/EC Machinery Directive.  
2011/65/EU Restriction of Hazardous substances.  
2000/14/EC Noise Emissions Directive, (amended by 2005/88/EC).

### The following standards have been applied to the product(s):

EN 55014-2:1997 +A1:2001 +A2:2006, EN 61000-3-2:2006 +A1:2008 +A2:2009, EN 61000-3-11:2000,  
EN 55014-1:2006 +A1:2009, EN 60335-2-79:2009, EN 62233:2008, EN 60335-1:2002 +A13:2008,  
EN ISO 11203:2009, EN ISO 3744:2010, EN ISO 4871:2009, EN 60335-2-79:2012.

The technical documentation required to demonstrate that the product(s) meet(s) the requirement(s) of the above listed directive(s) has been completed and is available for inspection by the relevant enforcement authorities.

The CE mark was first applied in: 2011

Signed:

J.A. Clarke  
Director

JET 8000 Pressure washer D O C

Page 2 of 2

# A SELECTION FROM THE VAST RANGE OF

# Clarke®

## QUALITY PRODUCTS

### AIR COMPRESSORS

From DIY to industrial, Plus air tools, spray guns and accessories.

### GENERATORS

Prime duty or emergency standby for business, home and leisure.

### POWER WASHERS

Hot and cold, electric and engine driven - we have what you need

### WELDERS

Mig, Arc, Tig and Spot. From DIY to auto/industrial.

### METALWORKING

Drills, grinders and saws for DIY and professional use.

### WOODWORKING

Saws, sanders, lathes, mortisers and dust extraction.

### HYDRAULICS

Cranes, body repair kits, transmission jacks for all types of workshop use.

### WATER PUMPS

Submersible, electric and engine driven for DIY, agriculture and industry.

### POWER TOOLS

Angle grinders, cordless drill sets, saws and sanders.

### STARTERS/CHARGERS

All sizes for car and commercial use.



**PARTS & SERVICE: 020 8988 7400**  
E-mail: [Parts@clarkeinternational.com](mailto:Parts@clarkeinternational.com) or [Service@clarkeinternational.com](mailto:Service@clarkeinternational.com)  
**SALES: UK 01992 565333 or Export 00 44 (0)1992 565335**

**Clarke® INTERNATIONAL** Hemnall Street, Epping, Essex CM16 4LG  
[www.clarkeinternational.com](http://www.clarkeinternational.com)