

Clarke®

CONTRACTOR®



CEMENT MIXER

MODEL NO: CCM110

PART NO: 3400855

OPERATION & MAINTENANCE INSTRUCTIONS



GC01/16

INTRODUCTION

Thank you for purchasing this CLARKE Cement Mixer.

Before attempting to use this product, please read this manual thoroughly and follow the instructions carefully. In doing so you will ensure the safety of yourself and that of others around you, and you can look forward to your purchase giving you long and satisfactory service.

GUARANTEE

This product is guaranteed against faulty manufacture for a period of 12 months from the date of purchase. Please keep your receipt which will be required as proof of purchase.

This guarantee is invalid if the product is found to have been abused or tampered with in any way, or not used for the purpose for which it was intended.

Faulty goods should be returned to their place of purchase, no product can be returned to us without prior permission. This guarantee does not effect your statutory rights.

SPECIFICATION

| | |
|-------------------------------------|----------------------|
| Max Drum capacity | 110 Litre |
| Max Mixing Capacity | 90 Litre |
| Drum Speed | 33 rpm |
| Weight | 43 kg |
| Dimensions: Length x Width x Height | 1090 x 690 x 1242 mm |
| Power Cable Length | 1350 mm |
| IP Rating | IP44 |
| Sound Pressure | 61.41 dB(A) |
| Sound Power Measured | 81 dB LWA |
| Sound Power Guaranteed | 83 dB LWA |










GENERAL SAFETY PRECAUTIONS

1. Always keep the work area clean and well lit. Floors should always be kept clear. Cluttered or dark areas invite accidents.
2. Always keep children and bystanders away while operating a power tool. Distractions can cause loss of control.
3. Always stay alert & do not use a machine while you are tired or under the influence of medication or alcohol.
4. Always wear suitable protective clothing and eye protection including industrial gloves, ear defenders & approved impact resistant safety glasses. (Eye glasses are NOT safety glasses). Wear a dust mask if handling cement dust.
5. Never over-reach. Keep your proper footing and balance at all times to enable better control of the machine in unexpected situations.
6. Never stand on the machine. Injury could occur from a fall.
7. Always store machines out of reach of children.
8. Always read and become familiar with the entire operating manual.
9. Never allow persons unfamiliar with this manual to operate this machine.
10. Always maintain the machine with care and keep it clean for best / safest performance.
11. Never use this machine if any part is damaged. Have it inspected and repaired by a competent technician.
12. Never modify this machine in any way. Use it only for the purpose for which it is designed.
13. Always ensure the electrical cable is fully protected and there is no danger of damage from equipment or materials. Always inspect the cable before use and replace if any damage is apparent.
14. Avoid inhaling cement dust while loading the mixer. Avoid contact with cement or any mixing additives being used. Wear gloves/face mask if necessary.
15. Always disconnect the machine from the power supply when not in use, and before carrying out any maintenance.
16. Never leave the machine running unattended or leave the machine until it comes to a complete stop.
17. Always keep your hands well clear of the rotating drum at all times. Never put your hands inside the drum when the machine is switched on.

18. Never put any tools or other objects in or around the drum while it is rotating.
19. Never wear jewellery or loose clothing that could be snagged by any part of the rotating drum.
20. Never load the drum when the machine is switched off. Always switch on and ensure the drum is rotating before loading.
21. Do not operate this machine on a gradient. Always stand the mixer on firm, level ground where it cannot tip over.
22. Always switch off and disconnect from the power supply before moving the machine around the work site.
23. Never use the mixer if the power cable or other important parts of the machine are damaged.
24. If an extension cable is used, the cable and plug must be of watertight construction. Inadequate extension cables can be dangerous.

SAFETY SYMBOLS

The following symbols are shown on the product or it's packaging.

| | | | |
|--|---|---|--|
|  | Read instruction manual before use |  | CE Mark |
|  83dB | Sound Power Rating label |  | Falls within Waste Electrical Equipment (WEEE) Directive |
|  | Wear Gloves |  | Wear eye protection |
|  | Wear protective footwear |  | Wear protective head wear |
|  | Class II product not requiring an earth connection. | | |

ELECTRICAL CONNECTIONS



WARNING: READ THESE ELECTRICAL SAFETY INSTRUCTIONS THOROUGHLY BEFORE CONNECTING THE PRODUCT TO THE MAINS SUPPLY.

Connect the mains lead to a standard, 230 Volt (50Hz) electrical supply through an approved 13 amp BS1363 plug, or a suitably fused isolator switch.

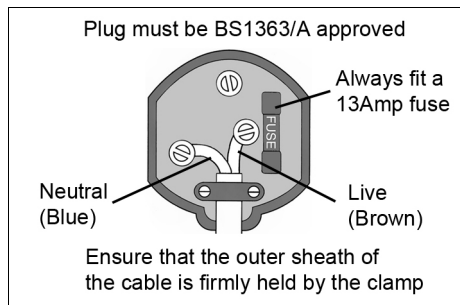
If the plug has to be changed because it is not suitable for your socket or because of damage, it must be removed and a replacement fitted, following the wiring instructions shown below. The old plug must be discarded safely as insertion into a power socket could cause an electrical hazard.



**WARNING: THE WIRES IN THE POWER CABLE OF THIS PRODUCT ARE COLOURED IN ACCORDANCE WITH THE FOLLOWING CODE:
BLUE = NEUTRAL BROWN = LIVE**

The wires in the mains lead should be wired up in accordance with the following colour code:

- Connect the BROWN coloured wire to the plug terminal marked a letter "L".
- Connect the BLUE coloured wire to the plug terminal marked a letter "N".



We strongly recommend that this machine is connected to the mains supply via a Residual Current Device (RCD). If you are not sure, consult a qualified electrician.

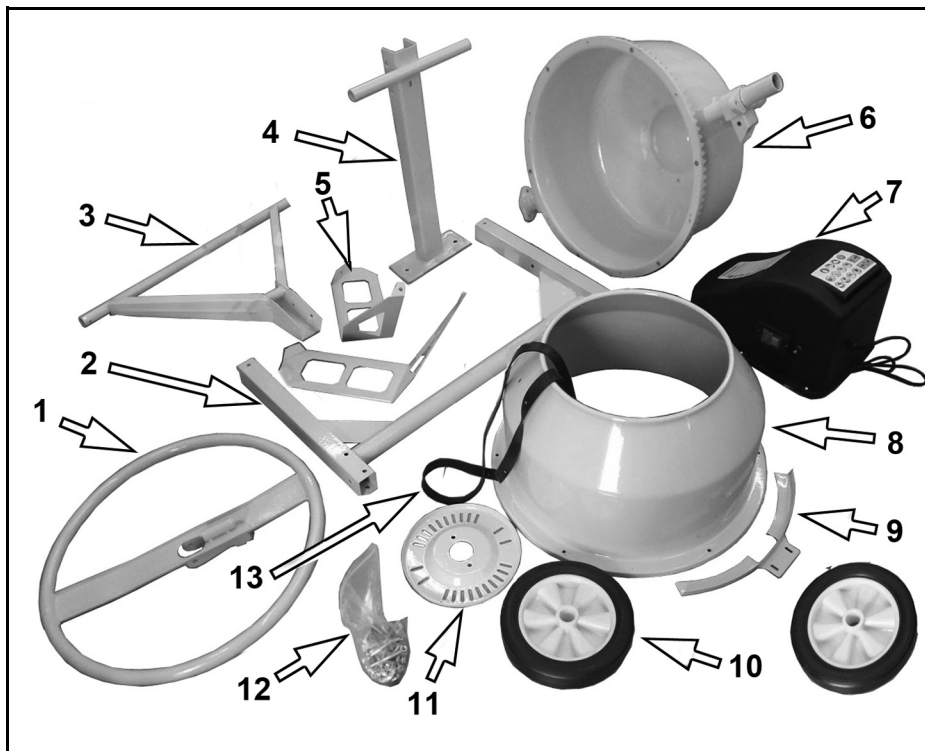
DO NOT try to carry out any repairs yourself.



This symbol indicates that this is a Class II product and does not require an earth connection.

UNPACKING & PRE-ASSEMBLY CHECK

Remove all components from the packing case and lay them out neatly so that they can be identified and checked for any possible damage during transit. Should any component be found to be damaged or missing, please contact your CLARKE dealer immediately.



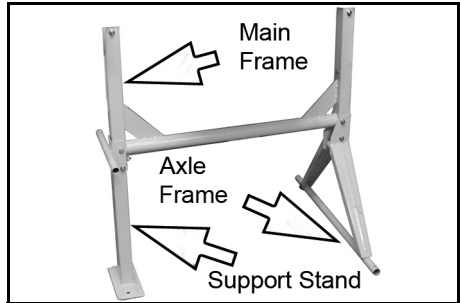
Check the components against the following list.

| | |
|---|----------------------------------|
| 1 | 1 x Tilt Handwheel |
| 2 | 1 x Main Frame |
| 3 | 1 x Axle Frame |
| 4 | 1 x Support Stand |
| 5 | 2 x Mixing Blades |
| 6 | 1 x Lower Drum & Cradle Assembly |
| 7 | 1 x Motor/Drive Assembly |

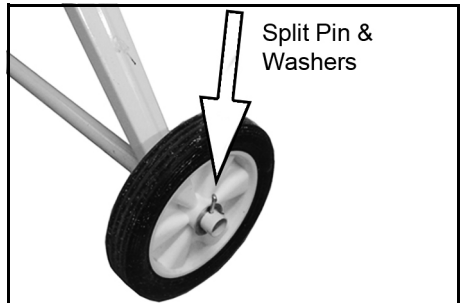
| | |
|----|---------------------------|
| 8 | 1 x Upper Drum |
| 9 | 1 x Drive Guard |
| 10 | 2 x Wheels |
| 11 | 1 x Angle Adjusting Plate |
| 12 | 1 x Fixings Kit |
| 13 | 1 x Rubber Seal |
| | |

ASSEMBLY

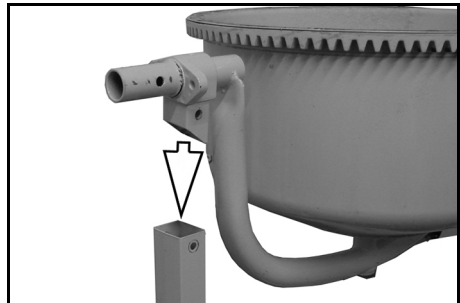
1. Bolt the main frame to the axle frame using M8 x 65mm bolts & nuts supplied.
2. Bolt the support stand to the main frame using M8 x 65mm bolts and nuts.



3. Slide the flat washers onto the axles, followed by a wheel and a second flat washer.
4. Insert the split pins in to the holes in each axle. Bend the ends of the split pins backward to secure them.

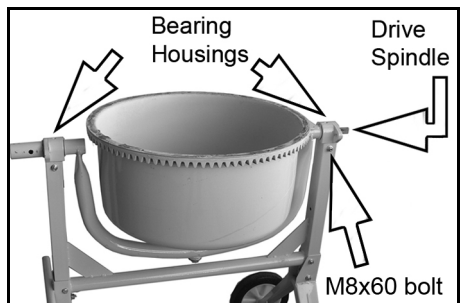


5. With the help of an assistant if required, set the cradle and lower drum assembly in position on the main frame.

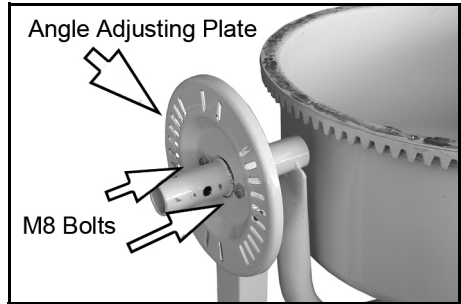


6. Secure the two bearing housings to the main frame using M8 x 60 bolts & nuts.

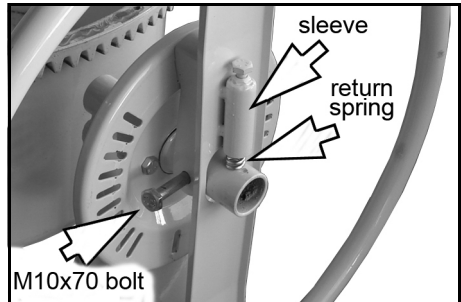
Note that one bearing housing includes the drive spindle and spur gear to drive the mixer. This assembly must be fitted to the end of the mixer where the motor assembly will be fitted this will be the end of the mixer with the wheels.



7. Fit the angle adjusting plate to the bearing housing opposite the drive spindle end. Slide it over the cradle spindle and bolt it to the bearing housing with two M8 x 25mm bolts.

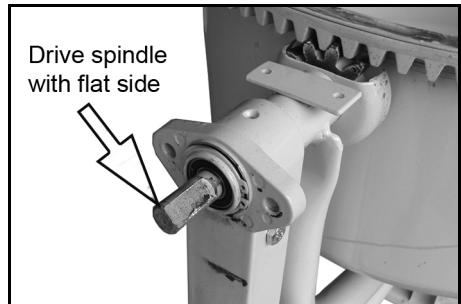


8. Insert the return spring into the sleeve on the tilt handwheel and slide the handwheel onto the cradle spindle. Insert the M10 x 70 securing bolt through the wheel and through the cradle spindle before securing with two M10 flat nuts.

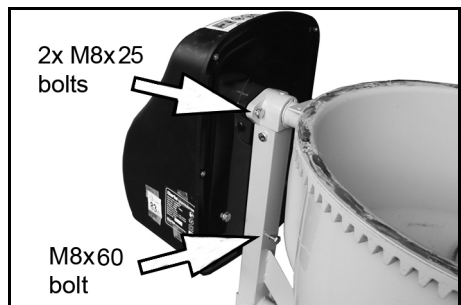


9. Take the motor/drive assembly and insert the drive spindle through the drive pulley, positioning the drive assembly against the main frame.

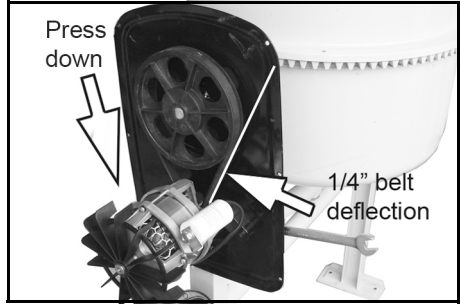
NOTE: The drive spindle has a flat side to correspond with the flat provided in the drive pulley. Rotate the lower drum gently to turn the spindle and align the flats.



10. Bolt the drive assembly to the main frame using two M8 x 25 bolts through the bearing housing and an M8 x 60mm bolt lower down the frame.

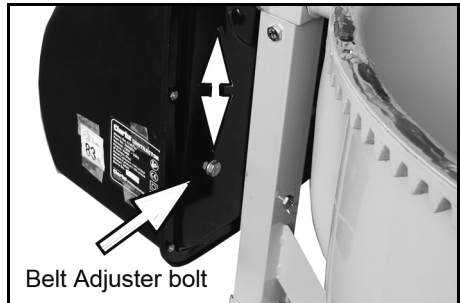


11. With the drive assembly in position, remove the bolts, nuts and washers securing the motor cover to the backing plate and lift away the cover.

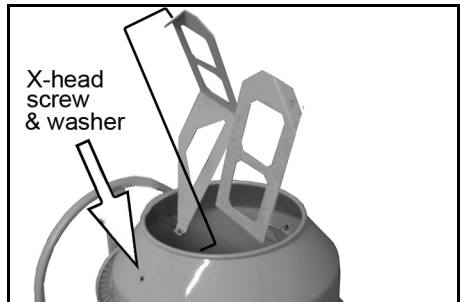


12. Check that the drive belt can be deflected no more than 1/4 inch and that the belt runs true. If so, re-fit the motor cover noting that the small washers should be behind the backing plate with the nuts.

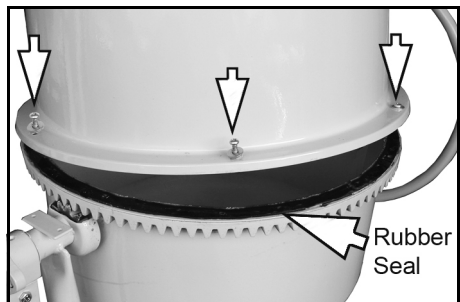
13. If the belt is slack, increase the tension by loosening the belt adjuster bolts shown and pushing down on the motor to tighten the belt, while re-tightening the belt adjuster bolts. Re-fit the cover as above.



14. Using the X-head screws, washers and M8 nuts, loosely fit the blades to the upper drum, noting that the tapered end will be at the bottom of the drum.



15. Carefully lay the rubber seal in position on the lip of the lower drum. Make sure the fixing holes in the seal line up with those of the drum.



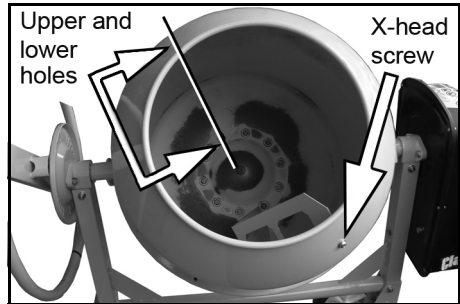
16. Rest the upper mixing drum, (with blades) on the rubber seal. Rotate the upper drum gently without dislodging the rubber seal until;

- all 8 holes in the upper drum line up with those in the rubber seal and in the lower drum.
- the lower tips of the blades line up with their fixing holes in the bottom of the lower drum.

17. When all fixing holes line up, secure the upper drum to the lower drum using the 8 cross-head screws and washers.

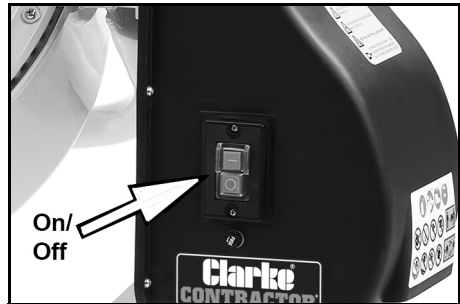
18. Bolt the mixing blades into the bottom of the mixing drum using M8 x 20 bolts and nuts.

19. Tighten all fixings and check that all components are secure.



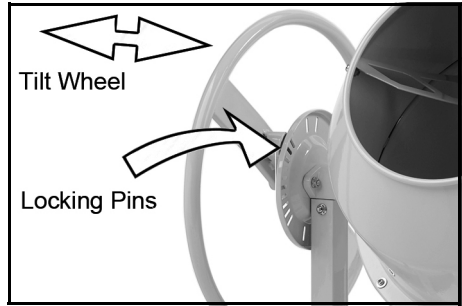
OPERATION

1. Switch the mixer on by pressing the green (I) switch on the motor. Stop by pressing the red (O) switch.
2. Introduce water first, to prevent the mixer from clogging.
3. Add cement as required.
4. Add aggregate etc.



- Do not load the drum when the machine is switched off. Always set the machine running before filling.
- Do not stop and start the mixer while there is a heavy weight of material inside the drum as the extra strain could be harmful to the motor.
- Keep the drum rotating while emptying the mixture.

5. When emptying, grip the tilt angle wheel firmly and tilt the wheel to disengage the locking pins.
6. Use the wheel to tip the mixer drum forward.
 - Only discharge the mixer when a suitable receptacle for the cement mix is in position.
 - Do not operate this machine on a steep gradient. Always stand the mixer on firm, level ground where it cannot tip over.



WARNING: REMEMBER THAT THE CENTRE OF GRAVITY OF THE LOADED MIXER MAY PRESENT A HAZARD WHEN OPERATING ON UNEVEN GROUND.

- Always keep water well away from the motor and other electrical components.

It is essential that the mixer is kept clean. Dried cement inside the drum will be very difficult to remove. For the mixer to perform at its best it must be thoroughly cleaned after every use.

CARE AND MAINTENANCE

BEFORE STARTING WORK

Inspect the power cable and ensure it is free from damage and is not in danger of being damaged by vehicles, equipment or other operations taking place on the work site.

AFTER USE

It is essential that the machine is hosed down thoroughly with clean water, being sure to remove all traces of cement mix especially from around the mixing blades. Take care to prevent water from entering the motor housing and if necessary, wrap a polythene sheet or bag over it during cleaning.

Re-tighten the drive belt after the first 25 hours use. The belt should be able to be deflected no more than 1/4 inch.

PERIODICALLY

After extensive use, inspect the paintwork and remove any rust that may be apparent before touching up where necessary with a rust resistant paint.

STORAGE

The mixer can be better stored with the axle frame and support stand folded away. Remove the axle frame and support stand securing bolts and lower the mixer to the floor with the help of an assistant. Loosely re-fit the bolts and nuts into their respective holes. Leave the mixer with the drum inverted to exclude water or debris.

Always store the mixer in a dry place out of reach of children.



CAUTION: OWING TO THE WEIGHT AND BULK OF THE MIXER, TWO PEOPLE WILL BE REQUIRED TO LOWER THE MIXER AND RE-FIT THE BOLTS.

Through the purchase of this product, the customer is taking on the obligation to deal with the Waste Electrical/Electronic Equipment (WEEE) in accordance with the WEEE regulations in relation to the treatment, recycling/recovery and environmentally sound disposal of WEEE.



If disposing of this product or any broken parts, do not dispose of with general waste. It must be disposed of according to the laws governing Waste Electrical and Electronic equipment at a recognized disposal facility.

DECLARATION OF CONFORMITY



DECLARATION OF CONFORMITY

This is an important document and should be retained.

We hereby declare that this product(s) complies with the following directive(s):

- 2004/108/EC Electromagnetic Compatibility Directive.
- 2006/42/EC Machinery Directive.
- 2011/65/EU Restriction of Hazardous substances.
- 2000/14/EC Noise Emissions Directive, (amended by 2005/88/EC).

The following standards have been applied to the product(s):

- EN 12161:2007, EN 60204-1:2006+A1:2006, EN 55014-1:2006+A1:2009+A2,
- EN 55014-2:1997+A1+A2, EN 61000-3-3:2013, EN 61000-3-2:2006+A1:2009+A2:2009.

The technical documentation required to demonstrate that the product(s) meet(s) the requirement(s) of the aforementioned directive(s) has been compiled and is available for inspection by the relevant enforcement authorities.

The CE mark was first applied in: 2014

Signed:

J.A. Clarke
Director

CCM110 Cement Mixer D.O.C

Page 2 of 2



DECLARATION OF CONFORMITY

This is an important document and should be retained.

Product Description:

Model number(s): CCM110

Serial / batch Number:

N/A

Date of Issue:

22/06/2015

(Noise Conformity)

Notified Body:

N/A

Technical Documentation Holder:

A.R. Pond
Clarke International
2a Strubland Road
London E10 7PB
UK

Conformity Assessment Procedure: to 2000/14/EC Annex V

Manufacturer:

Clarke International

Noise Related Value:

0.11 m3

Measured Sound Power Level:

81 dB

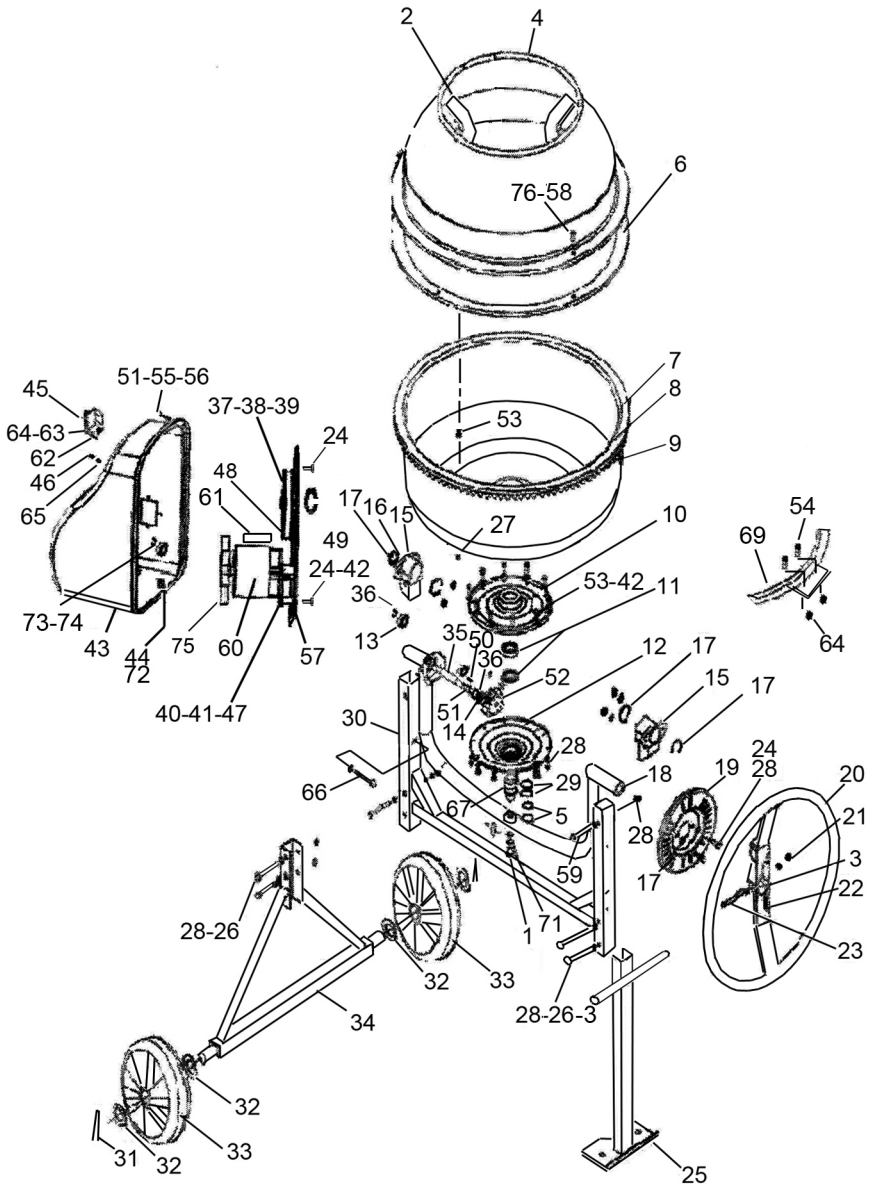
Guaranteed Sound Power Level:

83 dB

CCM110 Cement Mixer D.O.C

Page 1 of 2

PARTS DIAGRAM



PARTS LIST

| ID | DESCRIPTION | ID | DESCRIPTION | ID | DESCRIPTION |
|----|---------------------|----|------------------|----|---------------------|
| 1 | Bolt M14 x 25 | 27 | Locknut M8 | 53 | Bolt M8 x 15 |
| 2 | Mixer Blade | 28 | Nut M8 | 54 | Screw M5 x 10 |
| 3 | Washer 10 dia | 29 | Circlip 30 dia | 55 | Spring Washer M5 |
| 4 | Upper Drum | 30 | Main Frame | 56 | Nut M5 |
| 5 | Washer 24 dia | 31 | Split Pin 5 x 40 | 57 | Motor Mount Plate |
| 6 | Rubber Seal | 32 | Washer 26 i/dia | 58 | Flat Washer |
| 7 | C/sunk screw M6x10 | 33 | Wheel | 59 | Bolt M8 x 60 |
| 8 | Lower Drum | 34 | Axle Frame | 60 | Motor |
| 9 | Gear Ring | 35 | Drive Shaft | 61 | Capacitor |
| 10 | Upper Bearing Cover | 36 | Circlip 15 dia | 62 | Screw M4 x 12 |
| 11 | Bearing 6206 | 37 | Driven Pulley | 63 | Washer 4 dia |
| 12 | Lower Bearing Cover | 38 | Nylon Washer | 64 | Nut M4 |
| 13 | Bearing 6002 | 39 | Circlip 30 dia | 65 | Spring Washer 5 dia |
| 14 | Washer 15 dia | 40 | Motor Mounting | 66 | Bolt M8 x 60 |
| 15 | Bearing Housing | 41 | Flat Washer | 67 | Support Shaft |
| 16 | Washer 38 dia | 42 | Washer 8 dia | 68 | Screw M5 (for 69) |
| 17 | Circlip 38 dia | 43 | Motor Cover | 69 | Drive Guard Plate |
| 18 | Cradle | 44 | Power Cable | 70 | Washer 14 dia |
| 19 | Angle Adj Plate | 45 | On/Off Switch | 71 | Lock Washer 14 dia |
| 20 | Angle Adj Wheel | 46 | ST Screw | 72 | Cable Gland |
| 21 | Flat Nut M10 | 47 | Bolt M8 x 16 | 73 | Fuse |
| 22 | Coil Spring | 48 | Drive Belt | 74 | Fuse Holder |
| 23 | Bolt M10 x 70 | 49 | Circlip 25mm | 75 | Fan |
| 24 | Bolt M8 x 25 | 50 | Key C5 x 20 | 76 | X-head Screw |
| 25 | Support Stand | 51 | Flat Washer M5 | | |
| 26 | Bolt M8 x 65 | 52 | Spur Gear | | |

A SELECTION FROM THE VAST RANGE OF

Clarke®

QUALITY PRODUCTS

AIR COMPRESSORS

From DIY to industrial, Plus air tools, spray guns and accessories.

GENERATORS

Prime duty or emergency standby for business, home and leisure.

POWER WASHERS

Hot and cold, electric and engine driven - we have what you need

WELDERS

Mig, Arc, Tig and Spot. From DIY to auto/industrial.

METALWORKING

Drills, grinders and saws for DIY and professional use.

WOODWORKING

Saws, sanders, lathes, mortisers and dust extraction.

HYDRAULICS

Cranes, body repair kits, transmission jacks for all types of workshop use.

WATER PUMPS

Submersible, electric and engine driven for DIY, agriculture and industry.

POWER TOOLS

Angle grinders, cordless drill sets, saws and sanders.

STARTERS/CHARGERS

All sizes for car and commercial use.



PARTS & SERVICE: 0208 988 7400

E-mail: Parts@clarkeinternational.com or Service@clarkeinternational.com

SALES: UK 01992 565333 or Export 00 44 (0)1992 565335

Clarke® INTERNATIONAL Hemnall Street, Epping, Essex CM16 4LG
www.clarkeinternational.com