

# CLAMPBRO®



## WORKBENCH WITH DRAWER LOCKABLE CUPBOARD

MODEL NO: CWB57

PART NO: 7642010

## ASSEMBLY INSTRUCTIONS



LS0814

---

## INTRODUCTION

---

Thank you for purchasing this CLARKE product.

Before attempting to use this product, please read this manual thoroughly and follow the instructions carefully. In doing so you will ensure the safety of yourself and that of others around you, and you can look forward to your purchase giving you long and satisfactory service.

---

## GUARANTEE

---

This product is guaranteed against faulty manufacture for a period of 12 months from the date of purchase. Please keep your receipt which will be required as proof of purchase.

This guarantee is invalid if the product is found to have been abused or tampered with in any way, or not used for the purpose for which it was intended.

Faulty goods should be returned to their place of purchase, no product can be returned to us without prior permission.

This guarantee does not effect your statutory rights.

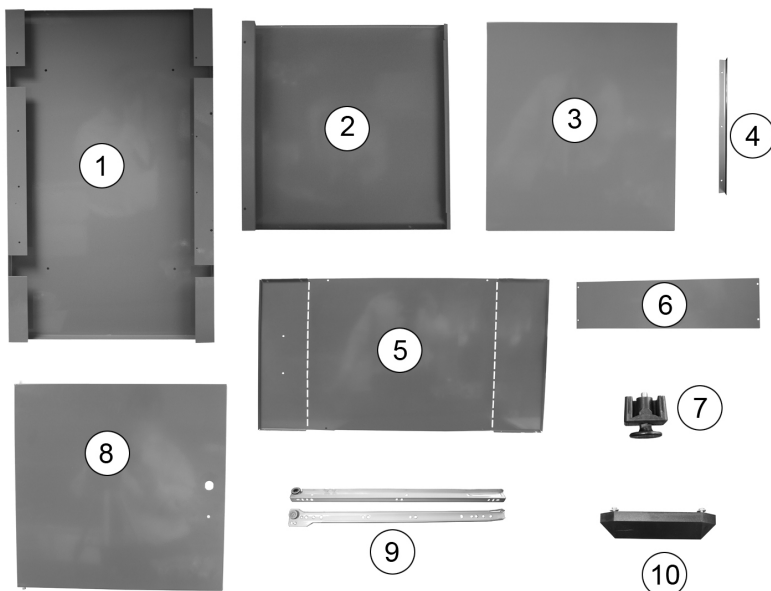
---

## SPECIFICATION

---

Dimensions (w x d x h)	570 x 600 x 870 mm
Weight (Empty)	23 kg
Maximum Load Per Drawer	10 kg
Maximum Load Total	60 kg

# CONTENTS



No	Description	Qty
1	Side Panel	2
2	Top/Bottom Panel	2
3	Rear Panel	1
4	Door Jamb	1
5	Drawer Base	1
6	Drawer Sides	2
7	Feet	4
8	Door	1
9	Drawer Runners	2 sets
10	Drawer Handle	1
11	Wooden Top (Not Shown)	1
12	Fixings kit 12 x M5x10 round head bolt set 19 x M4x8 flat head bolt set 4 x M6x25 hex head self tap screw set 1 x M5x8 round head bolt set 2 x M4x10 round head self tap screw set 1 x M6x16 hex socket cap screw set	

## ASSEMBLY



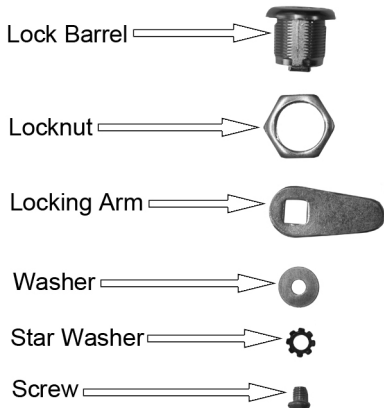
1. Fit the two side panels (1) to the rear panel (3) as shown, use the fixings (large nuts and large bolts) supplied to secure in place.
2. Do not tighten fully at this stage.



3. Insert the Bottom Panel (2) as shown and fix in place using the large nuts, large bolts and washers supplied.



4. Place the door (8) into position and insert the top panel (2) as shown.
5. The hinge pins on the door (8) must be inserted into the holes in the top and bottom panels (2).
6. Fit the door jamb (4) to the right side
7. Fully tighten all fixings.



8. Place the key in the lock and turn it so that the window on the front of the lock turns green.
9. Remove the screw and star washer from the rear of the lock.
10. Remove the washer and locking arm.
11. Remove the locknut from the lock barrel.

12. Insert the lock barrel with the green window at the top through the door and secure using the locknut as shown.



- Replace the locking arm and washer and secure using the star washer and screw.



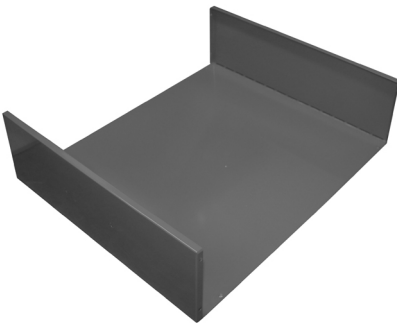
13. Check the lock and if necessary adjust the orientation of the locking arm.
14. Fit the door knob.



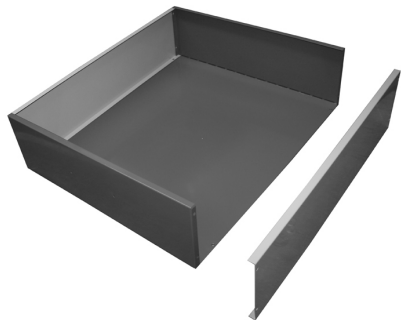
15. Fit once half of the drawer runners (9) into position as shown and use the small machine screws and nuts to secure in place.



16. Fit the wooden top (12) to the workbench using the coach bolts and washers provided.



17. Fold up the ends of the drawer base (5) along the creases as shown.



18. Fit the drawer sides (6) and secure to the drawer base (5) using the small machine screws and nuts to secure.



19. Fit the second half of the drawer runners (9) to the drawer using the small machine screws and nuts.
20. Fit the handle (10).



21. Insert the drawer into the workbench.
22. Fit the feet (7) to the workbench.

## ALSO AVAILABLE FROM Clarke®



### TWO DOOR TALL LOCKER CABINET

Model No. CC76  
Model No. 7642030



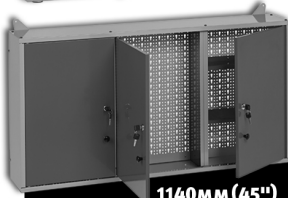
### WORKBENCH WITH LOCKABLE CUPBOARD

Model No. CWB57  
Model No. 7642010



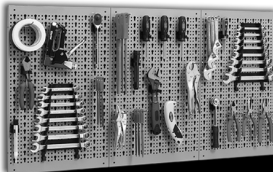
### LOCKABLE WALL CABINET

Model No. CWC38  
Model No. 7642000



### 1140MM (45") 3 DOOR LOCKABLE WALL CABINET

Model No. CWC114  
Model No. 7642005



### 1140MM (45") WIDE WALL MOUNTED TOOL RACK

Model No. CWR45C  
Model No. 7642025



### 3 DRAWER WORKBENCH WITH LOCKABLE CUPBOARD

Model No. CWB114  
Model No. 7642015

# A SELECTION FROM THE VAST RANGE OF

# Clarke®

## QUALITY PRODUCTS

### AIR COMPRESSORS

From DIY to industrial, Plus air tools, spray guns and accessories.

### GENERATORS

Prime duty or emergency standby for business, home and leisure.

### POWER WASHERS

Hot and cold, electric and engine driven - we have what you need

### WELDERS

Mig, Arc, Tig and Spot. From DIY to auto/industrial.

### METALWORKING

Drills, grinders and saws for DIY and professional use.

### WOODWORKING

Saws, sanders, lathes, mortisers and dust extraction.

### HYDRAULICS

Cranes, body repair kits, transmission jacks for all types of workshop use.

### WATER PUMPS

Submersible, electric and engine driven for DIY, agriculture and industry.

### POWER TOOLS

Angle grinders, cordless drill sets, saws and sanders.

### STARTERS/CHARGERS

All sizes for car and commercial use.



**PARTS & SERVICE: 0208 988 7400**

**E-mail: [Parts@clarkeinternational.com](mailto:Parts@clarkeinternational.com) or [Service@clarkeinternational.com](mailto:Service@clarkeinternational.com)**

**SALES: UK 01992 565333 or Export 00 44 (0)1992 565335**

**Clarke® INTERNATIONAL** Hemnall Street, Epping, Essex CM16 4LG  
[www.clarkeinternational.com](http://www.clarkeinternational.com)