

CLAMPBRO®



3 DRAWER WORKBENCH WITH LOCKABLE CUPBOARD

MODEL NO: CWB114

PART NO: 7642015

ASSEMBLY INSTRUCTIONS



LS0814

INTRODUCTION

Thank you for purchasing this CLARKE product.

Before attempting to use this product, please read this manual thoroughly and follow the instructions carefully. In doing so you will ensure the safety of yourself and that of others around you, and you can look forward to your purchase giving you long and satisfactory service.

GUARANTEE

This product is guaranteed against faulty manufacture for a period of 12 months from the date of purchase. Please keep your receipt which will be required as proof of purchase.

This guarantee is invalid if the product is found to have been abused or tampered with in any way, or not used for the purpose for which it was intended.

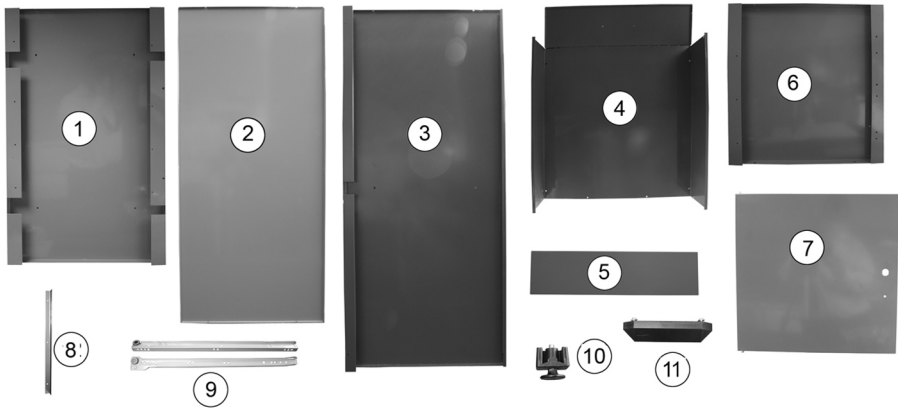
Faulty goods should be returned to their place of purchase, no product can be returned to us without prior permission.

This guarantee does not effect your statutory rights.

SPECIFICATION

Dimensions (w x d x h)	1140 x 600 x 870 mm
Maximum Load Per Drawer	10 kg
Maximum Load Total	150 kg

WHATS SUPPLIED



No	Description	Qty
1	Side Panel	2
2	Rear Panel	1
3	Top/Lower Shelf	2
4	Drawer Base and Sides	3
5	Drawer Rear	3
6	Centre Divider	1
7	Door	1
8	Door Jamb	1
9	Drawer Runners	3 sets
10	Feet	4
11	Drawer Handle	3
12	Wooden Workbench Top (not shown)	1
13	Fixings kit (not shown) Includes <ul style="list-style-type: none"> • 16 x M4x8 flat head bolt set (bolt, washer, nut) • 51 x M5x10 round head bolt set (bolt, washer, nut) • 4 x M6x25 Hex head self tapping screw and washer • 1 x m5x8 round head bolt and washer • 6 x m4x10 round head self tapping screw and washer • 3 Door Knobs • 3 Lock Assemblies and Keys 	

ASSEMBLY



1. Join the top shelf to the right side piece and secure using the large nuts, large bolts and washers supplied.
2. Do not tighten fully at this stage.



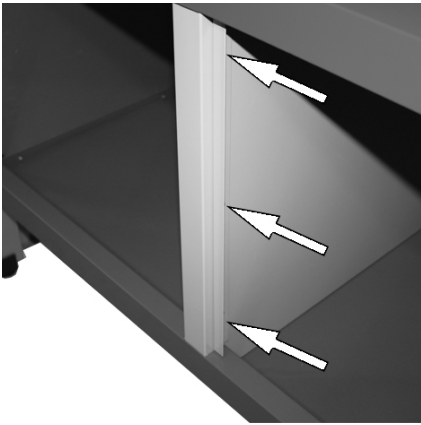
3. Fit the left side piece to the upper shelf in the same way.



4. Fit the lower shelf and centre divider as shown and secure using the large nuts, large bolts and washers supplied.
- The centre divider must be fitted with the open side to the left and the edge with six holes to the front.



5. Fit the rear panel and secure using the large nuts, large bolts and washers supplied.



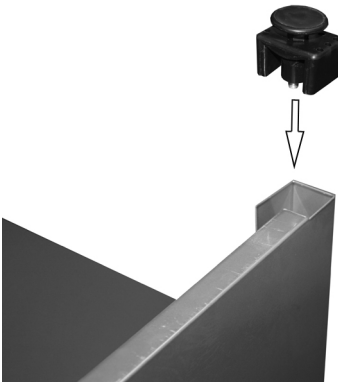
6. Fit the door jamb to the right side of the centre divider.



7. Place the door into position.

- The hinge pins on the door must be inserted into the holes in the upper and lower shelves.

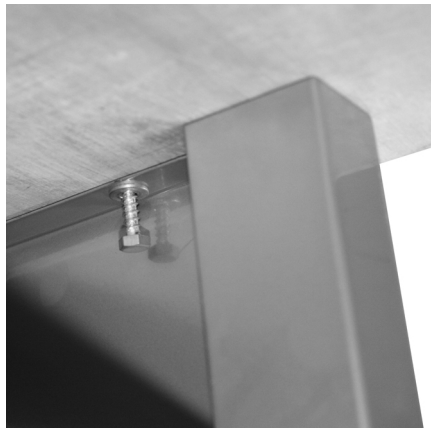
8. Fully tighten all fixings.



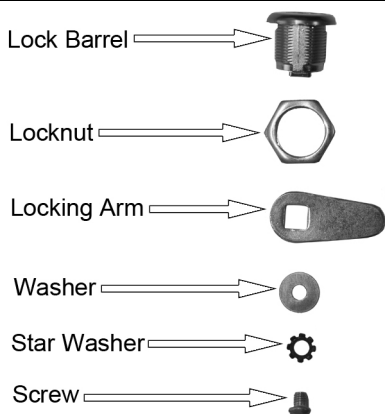
9. With assistance, Turn the unit over

10. Push the feet onto the bottom of the side pieces as shown.

11. Turn the unit back upright.



12. Fit the wooden top to the workbench using the coach bolts and washers provided.



13. Place the key in the lock and turn it so that the window on the front of the lock turns green.
14. Remove the screw and star washer from the rear of the lock.
15. Remove the washer and locking arm.
16. Remove the locknut from the lock barrel.

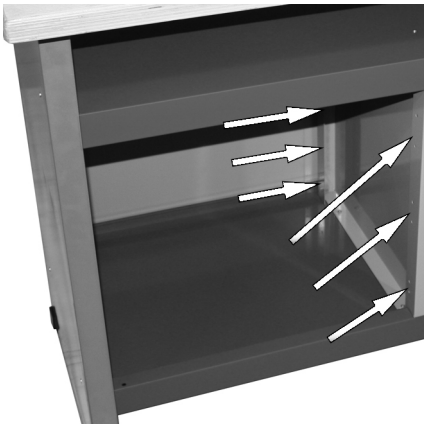
17. Insert the lock barrel with the green window at the top through the door and secure using the locknut as shown.



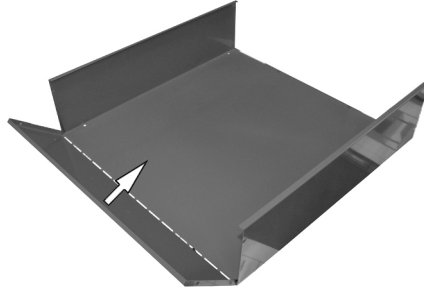
18. Replace the locking arm and washer and secure using the star washer and screw.



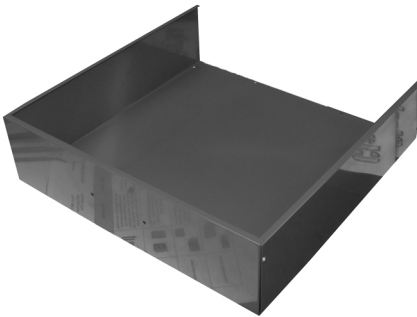
19. Check the lock and if necessary adjust the orientation of the locking arm.
20. Fit the door knob.



21. Fit the drawer runners into position as shown and use the small machine screws and nuts to secure.



22. Fold up the ends of the drawer along the creases as shown.



23. Secure the front to the sides using the small machine screws and nuts.



24. Fit the rear panel and secure using the small machine screws and nuts.



25. Fit the handle using the screws supplied.



26. Fit the runners to the drawer using the small machine screws and nuts.



27. Insert the drawers into the workbench as shown.

ALSO AVAILABLE FROM Clarke®



TWO DOOR TALL LOCKER CABINET

- 3 adjustable shelves
- Robust steel construction
- Includes door lock with 2 keys

Model No. CC76
Model No. 7642030



WORKBENCH WITH LOCKABLE CUPBOARD

- Drawer and lockable cupboard for secure storage of workshop equipment
- Durable powder coated finish

Model No. CWB57
Model No. 7642010



LOCKABLE WALL CABINET

- Integral hanging brackets for easy wall mounting
- Durable powder coated finish
- Robust steel construction

Model No. CWC38
Model No. 7642000



3 DRAWER WORKBENCH WITH LOCKABLE CUPBOARD

- Secure storage of hand and power tools
- Extra thick 30mm worktop

Model No. CWB114
Model No. 7642015



1140MM (45") 3 DOOR LOCKABLE WALL CABINET

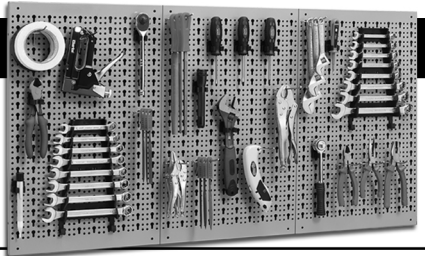
- 3 separate lockable compartments (2 Keys each)
- Two compartments with adjustable shelves
- Hanging brackets for easy wall mounting

Model No. CWC114
Model No. 7642005

1140MM (45") WIDE WALL MOUNTED TOOL RACK

- Keyhole slots allow wrench holders, hooks and clips to be positioned as required
- 3 individual panels make up a large 1140x596mm rack

Model No. CWR45C
Model No. 7642025



NOTES

NOTES

A SELECTION FROM THE VAST RANGE OF

Clarke®

QUALITY PRODUCTS

AIR COMPRESSORS

From DIY to industrial, Plus air tools, spray guns and accessories.

GENERATORS

Prime duty or emergency standby for business, home and leisure.

POWER WASHERS

Hot and cold, electric and engine driven - we have what you need

WELDERS

Mig, Arc, Tig and Spot. From DIY to auto/industrial.

METALWORKING

Drills, grinders and saws for DIY and professional use.

WOODWORKING

Saws, sanders, lathes, mortisers and dust extraction.

HYDRAULICS

Cranes, body repair kits, transmission jacks for all types of workshop use.

WATER PUMPS

Submersible, electric and engine driven for DIY, agriculture and industry.

POWERTOOLS

Angle grinders, cordless drill sets, saws and sanders.

STARTERS/CHARGERS

All sizes for car and commercial use.



PARTS & SERVICE: 0208 988 7400

E-mail: Parts@clarkeinternational.com or Service@clarkeinternational.com

SALES: UK 01992 565333 or Export 00 44 (0)1992 565335

Clarke INTERNATIONAL Hemhall Street, Epping, Essex CM16 4LG
www.clarkeinternational.com