

Elan®



LAMINATE FLOOR CUTTER

Model No: CLC1

PART NO: 3400670

OPERATING INSTRUCTIONS

INTRODUCTION

Thank you for purchasing this CLARKE Laminate Floor Cutter. This CLARKE product has been designed to give long and trouble free service. If however, having followed the instructions in this booklet carefully, you encounter problems, take the unit to your local CLARKE dealer.

The CLC1 can cut any laminated MDF flooring up to 8" (203mm) wide, 7/16" (11mm) thick but is not designed for other materials. The fence can be positioned at 150 or 203mm from the blade.

GUARANTEE

This product is guaranteed against faulty manufacture for a period of 12 months from the date of purchase. Please keep your receipt which will be required as proof of purchase. This guarantee is invalid if the product is found to have been abused, tampered with, or not used for it's intended purpose.

Faulty goods should be returned to their place of purchase, no product can be returned to us without prior permission. This guarantee does not effect your statutory rights.

GENERAL SAFETY PRECAUTIONS

1. Always thoroughly familiarise yourself with this product & its operation, and always read and understand the instructions and warnings in this manual before using the equipment.
2. Always wear safety glasses when operating this tool.
3. Keep cutting blade in the fully closed position when not in use.
4. Keep fingers and hands away from blade cutting area.
5. Periodically check that all hardware remains tight.
6. Always keep out of reach of children.

ASSEMBLY

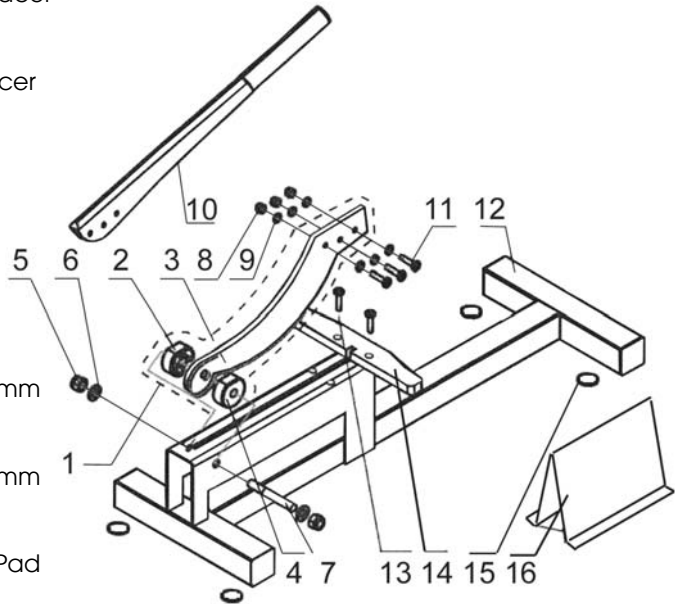
Upon receipt of the product, unpack the components and check for deficiencies. The CLC1 laminate Cutter should include the following:

- Main Frame Assembly
- Blade
- Work Support
- Operating Handle c/w fixings
- Guide Fence c/w fixings
- Self adhesive pads (non-slip)

1. Assemble handle (10) to the cutting blade (3) with the three screws (11), with washers (9) & nuts (8) as shown in the component parts diagram.
2. Attach the blade assembly (1) to the cutter base (12) using the two nylon spacers (2 & 4) and axle (7) as shown in the diagram, securing with the nuts & washers (5 & 6).
3. Attach the guide fence (14) to the frame (12) at one of the two available positions using the screws (13).

COMPONENT PARTS

- 1 Blade Assembly
- 2 Right Nylon Spacer
- 3 Cutting Blade
- 4 Left Nylon Spacer
- 5 M10 Locknut
- 6 10mm Washer
- 7 Axle
- 8 M6 Nut
- 9 6mm Washer
- 10 Handle
- 11 Screw M6 x 17mm
- 12 Cutter Base
- 13 Screw M6 x 13mm
- 14 Guide Fence
- 15 Self-Adhesive Pad
- 16 Work Support



OPERATING INSTRUCTIONS

1. Place cutter on a level floor.
2. Mark the work piece to be cut and insert it against the guide fence.
 - Use the work support (16) to support the laminate while cutting.
 - Always cut the laminate with the finished side up.
 - Place the grooved or indented side of the laminate against the fence. (The "tongue" side should be closest to the blade.)
3. Begin the cut by holding the laminate firmly with one hand and cutting into the laminate. Once the blade has penetrated the laminate, proceed using both hands with a smooth powerful downward motion to complete your cut.
4. Remember the cut side should always be placed along the wall to be covered up by skirting or finish moulding.

MAINTENANCE

1. Keep the cutter clean and store in a dry place when not in use.
2. Keep edges of blade sharp by using a sharpening stone.
3. Periodically check that all nuts and bolts are tight.

A SELECTION FROM THE VAST RANGE OF

Clarke®

QUALITY PRODUCTS

AIR COMPRESSORS

From DIY to industrial, Plus air tools, spray guns and accessories.

GENERATORS

Prime duty or emergency standby for business, home and leisure.

POWER WASHERS

Hot and cold, electric and engine driven - we have what you need

WELDERS

Mig, Arc, Tig and Spot. From DIY to auto/industrial.

METALWORKING

Drills, grinders and saws for DIY and professional use.

WOODWORKING

Saws, sanders, lathes, mortisers and dust extraction.

HYDRAULICS

Cranes, body repair kits, transmission jacks for all types of workshop use.

WATER PUMPS

Submersible, electric and engine driven for DIY, agriculture and industry.

POWER TOOLS

Angle grinders, cordless drill sets, saws and sanders.

STARTERS/CHARGERS

All sizes for car and commercial use.



PARTS & SERVICE: 0208 988 7400

E-mail: Parts@clarkeinternational.com or Service@clarkeinternational.com

SALES: UK 01992 565333 or Export 00 44 (0)1992 565335

Clarke INTERNATIONAL Hemnall Street, Epping, Essex CM16 4LG
www.clarkeinternational.com