

# Elantra®

## STRONG-ARM



## 1.25 TONNE ALUMINIUM RACING JACK

Model No: CTJ1250AB

PART NO: 7621824

## OPERATING & MAINTENANCE INSTRUCTIONS



---

## INTRODUCTION

---

Thank you for purchasing this CLARKE Aluminium Racing Jack.

Before attempting to use this product, please read this manual throughout and follow the instructions carefully. Thoroughly familiarise yourself with this product & its operation in order to ensure the safety of yourself and others around you. In so doing, you can look forward to the product giving you long and satisfactory service.

## GUARANTEE

This product is guaranteed against faulty manufacture for a period of 12 months from the date of purchase. Please keep your receipt which will be required as proof of purchase. This guarantee is invalid if the product is found to have been abused or tampered with in any way, or not used for its intended purpose.

Faulty goods should be returned to their place of purchase, no product can be returned to us without prior permission. This guarantee does not effect your statutory rights.

---

## SPECIFICATION

---

CTJ1250AB	
Part Number	7621824
Weight	11.65 kg
Dimensions (L x W x H )	580 x 250 x 210 mm (without handle)
Rated Load	1250 kg
Min Height of Saddle	85 mm
Max Height of Saddle	375 mm
Oil Pump Capacity	0.11 litres
No of Strokes from Min to Max Height	8
Distance Raised per Stroke	36 mm (average)

Please note that details and specifications contained herein, are correct at the time of going to print. However, CLARKE International reserve the right to change specifications at any time without prior notice.

---

# GENERAL SAFETY PRECAUTIONS

---

## GENERAL

1. ALWAYS read and ensure you fully understand the following precautions and the hazards associated with this product. Do not allow anyone who has not read these instructions to use the jack.
2. Only use this jack for its intended purpose.
3. NEVER carry out any modifications to this product. If experiencing difficulty of any kind consult your local dealer.

## WORK AREA

1. NEVER use the jack on sloping surfaces, only on level ground. The jack may move away slightly as soon as the tyre leaves the ground.
2. DO NOT start the vehicle engine with the jack in use.
3. This jack is for lifting only. Do not move a load using the jack as a dolly.
4. Ensure the load is taken by the full saddle and that the point of lift on the vehicle is strong enough to support the full weight adequately.
5. Never allow children or bystanders in the area while the jack is in use.
6. NEVER work underneath a vehicle supported only by this jack. If working under a vehicle, always use stands designed for the purpose.
7. Ensure the jack is on a firm solid base and that there is no likelihood of it slipping when under load.
8. Ensure that all personnel are well clear of a load being raised or lowered.

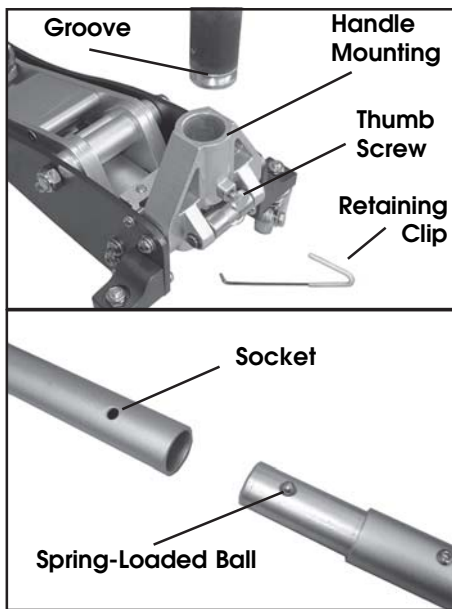
## SERVICING & REPAIRS

1. Check the jack for damage before use and do not use if damaged. If in doubt, DO NOT use. Consult your local Clarke dealer.
2. ALWAYS use spare parts supplied by Clarke International. Using non-standard parts could be extremely dangerous.
3. Ensure that the jack is properly maintained at all times and that no corrosion or other damage is allowed to weaken any part of it.
4. When necessary, have your jack serviced or repaired by a qualified technician using identical replacement parts. This will ensure that the safety of the jack is maintained.
5. NEVER use the jack if it has been subjected to excess load (over 1250 kg). The jack should be removed from service immediately and fully inspected by qualified personnel and passed as serviceable before further use.

**Please keep these instructions in a safe place for future reference.**

## UNPACKING AND ASSEMBLY

1. Remove the retaining clip by pressing the handle mounting downwards and releasing the clip from the base of the jack and from the handle opening.
2. Undo the thumbscrew until the lower handle can be inserted fully into the handle socket.
  - The handle has a groove which should engage with the thumb screw once it is re-tightened.
3. Re-tighten the thumb screw to secure the lower handle.
4. Add the upper handle by pushing it onto the lower handle until the ball and socket of the handle sections snap together.



## OPERATION

Before use, visually inspect the jack for oil leaks or any other sign of damage. Should any be apparent, have the jack inspected and repaired by a qualified technician before use.

Ensure the vehicle to be raised is chocked and standing on firm, level ground before manoeuvring the jack so that the saddle is directly beneath the lifting point. Consult the vehicle handbook to determine the suitable lifting points.

## USING THE JACK

1. Turn the handle fully clockwise to close the release valve, and pump the handle to raise the saddle until it reaches the vehicle lifting point.
2. Ensure that the saddle is directly below the lifting point and there are no obstructions to prevent a clean lift. Keep all personnel at a safe distance before continuing to pump the handle to raise the vehicle.

**NOTE: The jack may move slightly during operation. It is important therefore, that the floor is clean and completely free from debris.**

3. Position axle stands directly beneath suitable supporting points under the vehicle, before **very gently** twisting the handle anticlockwise.

- This will open the release valve to lower the vehicle onto the stands. To stop it lowering, turn the handle clockwise again. Always avoid a rapid descent by turning the handle **slowly**.
- 4. Carefully lower the vehicle onto the axle stand, checking constantly, preferably with an assistant, that the vehicles supporting point rests snugly and cleanly on the axle stand, and that the stand is stable before all the weight is taken.

**NOTE: Ensure this operation is carried out under complete control. Do not allow the load to drop suddenly as this could damage internal components.**

- 5. Completely remove the jack from the vehicle.



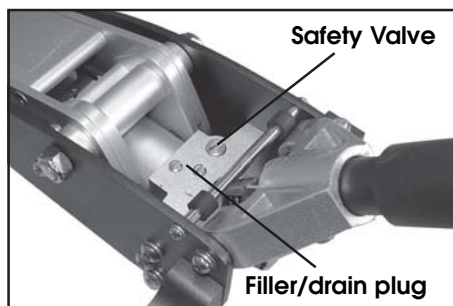
**WARNING! NEVER WORK ON THE VEHICLE WHEN SUPPORTED ONLY BY A JACK. THIS IS A HIGHLY DANGEROUS PRACTICE. THE VEHICLE MUST BE SUPPORTED ON AXLE STANDS, OR SUITABLE SUPPORTS, BENEATH THE JACKING/SUPPORT POINTS RECOMMENDED BY THE VEHICLE MANUFACTURER. THERE SHOULD BE NO LOAD ON THE JACK.**

## MAINTENANCE

### PURGING AIR FROM THE SYSTEM

If air bubbles become trapped inside the hydraulic system, the efficiency of the jack will be reduced and it may not fully support the vehicle weight. Any air can be purged from the system as follows.

1. Turn the handle anti-clockwise to allow oil to circulate freely around the system. Remove the filler plug.
2. Pump the handle several times to purge air from the system.
3. Replace the filler plug, then turn the handle clockwise and test the jack. If efficiency is still low, check the oil level as below.



### CHECKING THE OIL LEVEL

If the jack has been stored for long periods, check for oil leaks before use. If necessary, check the oil level as follows:

1. Ensure the jack is fully lowered by turning the handle fully anti-clockwise.
2. Remove the oil filler plug on the top of the ram assembly. A broad-bladed screwdriver is required.

- The oil should be almost level with the bottom of the oil filler hole.
- Oil can be topped up using Clarke Hydraulic Oil: P/No. 3050830 for 1 litre.

## OIL REPLACEMENT

1. With the jack lowered, remove the filler plug as above. Tilt the jack onto its side and drain the old oil into a container.
2. Return the jack upright and refill with hydraulic oil up to the lower rim of the filler hole.
3. Purge any air from the system and replace the filler plug.
4. Dispose of old oil appropriately and be sure to wipe up any spillage.

## GENERAL CARE

1. Periodically lubricate the hinges, front roller and rear castors with a light oil.
2. Store in a dry location with the arm in its lowest position.
3. In the event of damage or broken components, replacements are available from Clarke Parts & Service.

## TROUBLESHOOTING

PROBLEM	CAUSE	SOLUTION
Jack will not raise to the full height.	Low oil level.	Check for leakage and top up if required via the oil plug.
	Air in cylinder.	Pump handle to purge air from system.
	O-rings worn.	Return to your Clarke dealer for overhaul.
Jack will not hold the load.	Release valve not tightly closed.	Check valve is closing fully.
	Release valve not seating.	Return to your Clarke dealer for overhaul.
	Air in cylinder.	Pump handle to purge air from system.
Jack does not lower when the valve is opened.	Cylinder overfilled with oil.	Drain off excessive oil.
	Piston or pivot arm bent or binding.	Return to your Clarke dealer for repair.
	Disconnected or broken return spring.	Return to your Clarke dealer for repair.
	Hinged components not moving freely.	Lubricate hinged joints.
Jack feels spongy when lifting.	Air trapped in system.	Pump handle to purge air from system.

## ENVIRONMENTAL PROTECTION



One of the most damaging sources of environmental pollution are oil products. Never throw away used hydraulic oil with domestic refuse or flush it down a sink or drain. Collect all the hydraulic oil in a leak proof container and take it to your local waste disposal site.

If disposing of this product or any damaged components, do not dispose of with general waste. This product contains valuable raw materials and should be taken to your local civic amenity site for recycling of metal products.

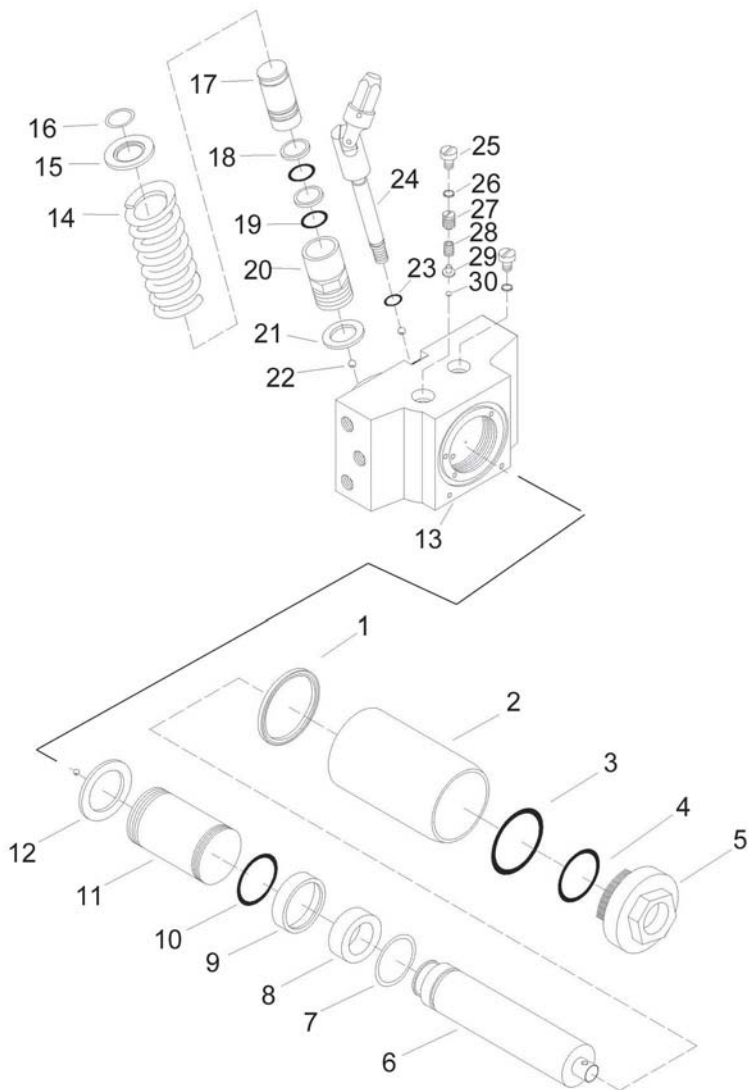
## RAM COMPONENT PARTS

No	DESCRIPTION	Qty	No	DESCRIPTION	Qty
1	Bottom Seal Ring	1	16	Retaining Ring 15 mm	1
2	Reservoir	1	17	Pump Piston	1
3	O-Ring 45.3 x 1.8	1	18	Retaining ring 10.6 x 20 x1.25	1
4	O-Ring 24.5 x 3.55	1	19	O-Ring 10.2 x 2.65	1
5	Top Nut	1	20	Cylinder	1
6	Piston Rod	1	21	Cylinder Copper Seal Ring	1
7	Retaining Ring 25 mm	1	22	Steel Ball5	1
8	Piston Rod Base	1	23	O-Ring 6.8 x 1.8	1
9	Washer	1	24	U-Joint	1
10	O-Ring 20.5 x 4.6	1	25	Relief Valve Cover Screw	1
11	Oil Holder	1	26	Seal Ring 15 x 9.5 x 2	1
12	Sealing Ring	1	27	Relief Valve Set Screw	1
13	Hydraulic Base	1	28	Relief Valve Spring	1
14	Spring	1	29	Spring Base	1
15	Spring Base	1	30	Steel Ball 4	1

**When requesting replacement parts, please quote the prefix:**

**HA-CTJ1250AB, followed by the number listed above.**

# RAM COMPONENT PARTS





## FRAME COMPONENT PARTS

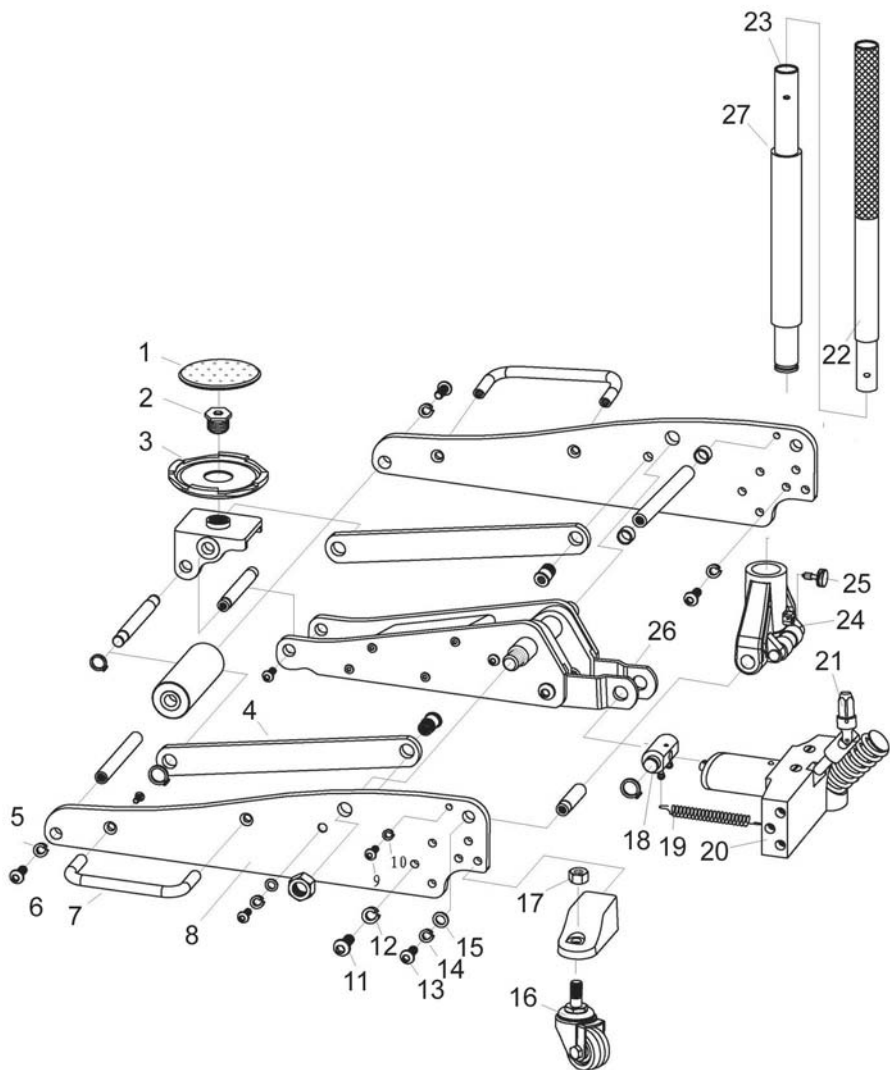
No	DESCRIPTION	Qty
1	Saddle Pad	1
2	Saddle Fixing Screw	1
3	Saddle	1
4	Side Arm	2
5	Spring Washer	2
6	Socket Head Screw	2
7	Side Handle	2
8	Side Plate	2
9	Socket Head Screw	2
10	Spring Washer	2
11	Socket Head Screw M10 x25	6
12	Spring Washer 10	6
13	Socket Head Screw M8 x 16	2
14	Spring Washer	2

No	DESCRIPTION	Qty
15	Washer	2
16	Swivel Castor	2
17	Nut M10	2
18	Connecting Block	1
19	Return Spring	2
20	Pump Assembly	1
21	Control Swivel	1
22	Upper Handle	1
23	Lower Handle	1
24	Yoke	1
25	Thumb Screw	1
26	Main Lifting Arm	1
27	Protective Sleeve	1

**When requesting replacement parts, please quote the prefix:**

**HA-CTJ1250AB, followed by the number listed above.**

# FRAME COMPONENT PARTS



# DECLARATION OF CONFORMITY



**Clarke**<sup>®</sup>  
**INTERNATIONAL**

Hemnal Street, Epping, Essex CM16 4LG

## DECLARATION OF CONFORMITY

This is an important document and should be retained.

We hereby declare that this product(s) complies with the following directive(s):

2006/42/EC Machinery Directive.

The following standards have been applied to the product(s):

EN 1494:2000+A1:2008

The technical documentation required to demonstrate that the product(s) meet(s) the requirement(s) of the aforementioned directive(s) has been compiled and is available for inspection by the relevant enforcement authorities.

The CE mark was first applied in: 2012

<b>Product Description:</b>	Aluminium Racing Jack
<b>Model number(s):</b>	CTJ1250AB
<b>Serial / batch Number:</b>	N/A
<b>Date of issue:</b>	23/01/13

Signed:

J.A. Clarke  
Director

# A SELECTION FROM THE VAST RANGE OF

# Clarke®

## QUALITY PRODUCTS

### AIR COMPRESSORS

From DIY to industrial, Plus air tools, spray guns and accessories.

### GENERATORS

Prime duty or emergency standby for business, home and leisure.

### POWER WASHERS

Hot and cold, electric and engine driven - we have what you need

### WELDERS

Mig, Arc, Tig and Spot. From DIY to auto/industrial.

### METALWORKING

Drills, grinders and saws for DIY and professional use.

### WOODWORKING

Saws, sanders, lathes, mortisers and dust extraction.

### HYDRAULICS

Cranes, body repair kits, transmission jacks for all types of workshop use.

### WATER PUMPS

Submersible, electric and engine driven for DIY, agriculture and industry.

### POWER TOOLS

Angle grinders, cordless drill sets, saws and sanders.

### STARTERS/CHARGERS

All sizes for car and commercial use.



**PARTS & SERVICE: 020 8988 7400**

**E-mail: [Parts@clarkeinternational.com](mailto:Parts@clarkeinternational.com) or [Service@clarkeinternational.com](mailto:Service@clarkeinternational.com)**

**SALES: UK 01992 565333 or Export 00 44 (0)1992 565335**

**Clarke** INTERNATIONAL Hemnall Street, Epping, Essex CM16 4LG  
[www.clarkeinternational.com](http://www.clarkeinternational.com)