

Blamhke®



FOLDING CRANE

MODEL No: CFC100

Part No: 7611005

ASSEMBLY INSTRUCTIONS



LS0216

INTRODUCTION

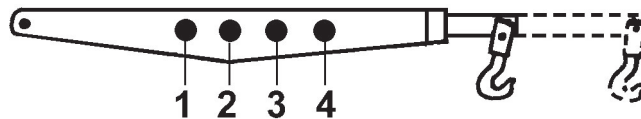
Thank you for purchasing this CLARKE folding crane.

Before using the crane, please read this instruction manual thoroughly and carefully follow all directions given. This is for your own safety and for that of others around you, and will also help you achieve long and trouble free service from your crane.

GUARANTEE

- This product is guaranteed against faulty manufacture for a period of 12 months. Please keep your receipt as proof of purchase.
- This guarantee is invalid if the product is found to have been abused or tampered with in any way, or not used for the purpose for which it was intended.
- Faulty goods should be returned to their place of purchase, no product can be returned to us without prior permission.
- This guarantee does not effect your statutory rights.

SPECIFICATION



	Position 1	Position 2	Position 3	Position 4
Lifting Capacity (kg)	1000	750	500	250
Max. Lift Height (mm)	1815	1880	1945	2010
Max.Jib Length (mm)	900	990	1080	1170
Overall Width (mm)	1030			
Width Between Legs (mm)	890			
Height of Legs (mm)	150			
Weight (kg)	74			
Part Number	7611005			

SAFETY INFORMATION



WARNING FAILURE TO COMPLY WITH THESE RULES AND PRECAUTIONS, MAY RESULT IN LOSS OF LOAD, DAMAGE TO, OR FAILURE OF THE EQUIPMENT, OR EVEN PERSONAL INJURY.

1. Always read instructions before setting up the equipment and before use
2. Always inspect the crane before use to ensure it is correctly assembled and in good condition and replace any damaged or worn parts
3. When replacing parts, use only those supplied by Clarke International. Refer to Parts List on pages 4-5.
4. Never exceed the safe working load capacities specified on the jib for each position (as marked on the jib).

IMPORTANT: If the load capacity decal becomes worn or illegible, contact Clarke Parts and service department, on 0208 988 7400 for replacement.

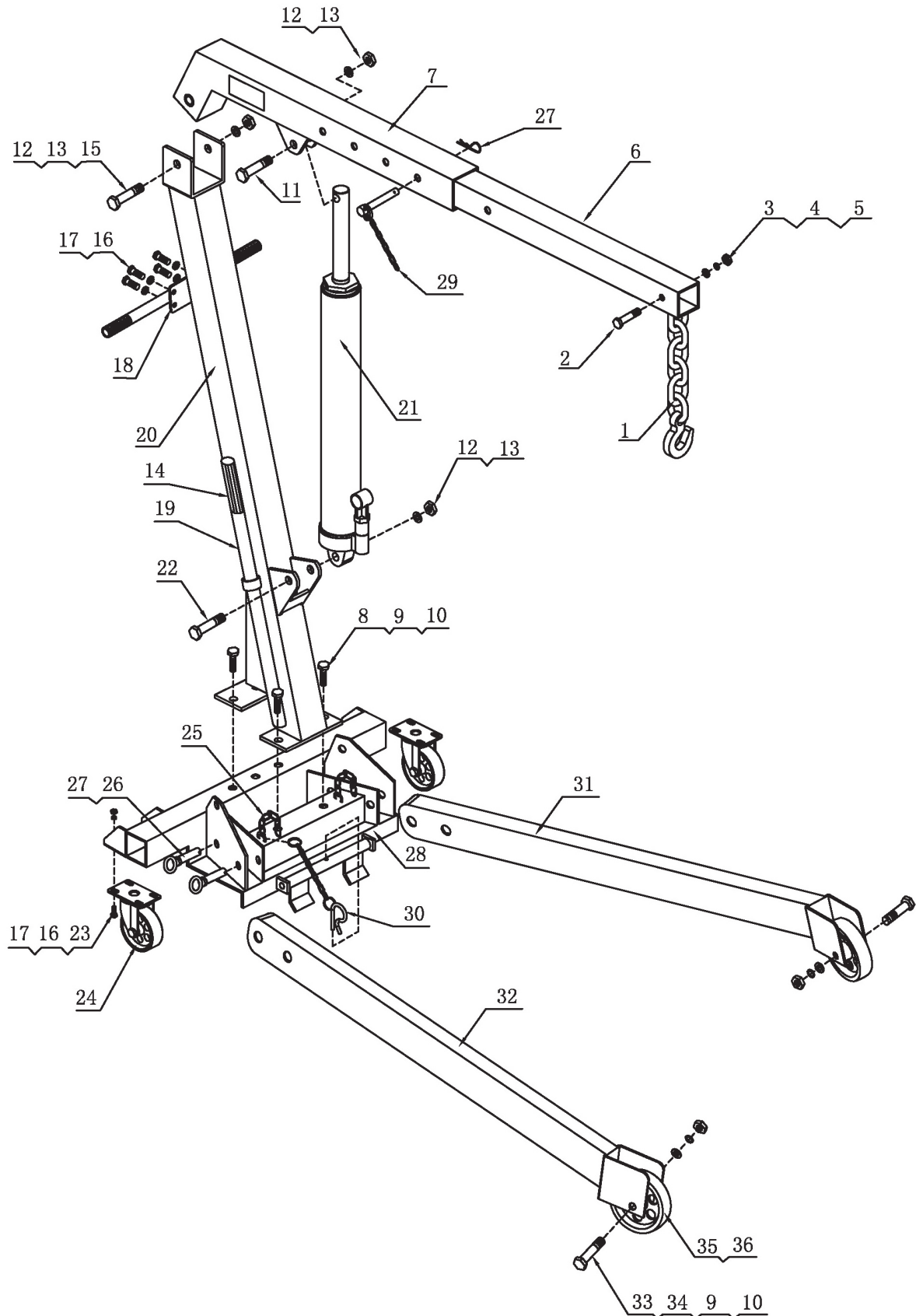
5. Only use chains, slings, hooks etc. with a rated capacity equal to, or greater than that of the load. Check that they are secure and will not slip under load.
6. Always lock the jib and legs into position before lifting a load.
7. Only use the crane on a flat, solid, level surface that is capable of sustaining the weight of the load.
8. Lower the load as much as possible before moving the crane. Do not use the crane to transport loads.
9. Use appropriate safety equipment, such as protective footwear, when using this crane.
10. Ensure the crane operator is skilled and trained in both operation and safety aspects.
11. Do not allow the load to swing or drop suddenly whilst moving or lowering
12. If the crane has been subjected to an abnormal load or shock, it should be removed from service immediately and fully inspected by qualified personnel
13. Ensure that the crane is properly maintained, and lubricated at all times, and that no rust or other forms of corrosion are allowed to weaken any part of the crane.
14. Do not use around children or untrained persons.
15. This is a heavy unit (74kg) take care when lifting.
16. Do not use this crane to lift people.
17. Do not work under any raised load.

STORAGE - VERY IMPORTANT

See separate section on page 9

PARTS SUPPLIED

Unpack the crane on to a clean flat area of hard standing, and visually inspect components to ensure that no damage was suffered in transit. Should any damage be apparent, please contact your Clarke dealer immediately.



PARTS SUPPLIED

Number	Description	Qty.	Part Number	Number	Description	Qty.	Part Number
1	Chain & Hook Assembly	1	SNCFC10001	19	Pump Handle	1	SNCFC10019
2	Bolt M12 x 80	1	SNCFC10002	20	Main Support Post	1	SNCFC10020
3	Flat Washer Ø12	1	SNCFC10003	21	Ram	1	SNCFC10021
4	Lock Washer Ø12	1	SNCFC10004	22	Bolt M16 x 90	1	SNCFC10022
5	Nut M12	1	SNCFC10005	23	Nut M8	8	SNCFC10023
6	Jib Extension	1	SNCFC10006	24	3½" Castor	2	SNCFC10024
7	Jib	1	SNCFC10007	25	Chain	2	SNCFC10025
8	Bolt M14 x 100	5	SNCFC10008	26	Lock Pin	4	SNCFC10026
9	Flat Washer Ø14	7	SNCFC10009	27	R Clip	5	SNCFC10027
10	Nut M14	7	SNCFC10010	28	Base	1	SNCFC10028
11	Bolt M16 x 70	1	SNCFC10011	29	Pin Assembly	1	SNCFC10029
12	Flat Washer Ø16	3	SNCFC10012	30	Heavy Duty R Clip + Chain	1	SNCFC10030
13	Nut M16	3	SNCFC10013	31	Left Leg	1	SNCFC10031
14	Handle Grip	3	SNCFC10014	32	Right Leg	1	SNCFC10032
15	Bolt M16 x 110	1	SNCFC10015	33	Bolt M14 x 85	2	SNCFC10033
16	Bolt M8 x 20	12	SNCFC10016	34	Lock Washer Ø8	2	SNCFC10034
17	Lock Washer Ø8	12	SNCFC10017	35	5" Iron Wheel	2	SNCFC10035
18	Handle	1	SNCFC10018	36	Bushing	2	SNCFC10036

SPARE PARTS AND SERVICING

Please contact your nearest dealer, or CLARKE International, on one of the following numbers.

PARTS & SERVICE TEL: 020 8988 7400

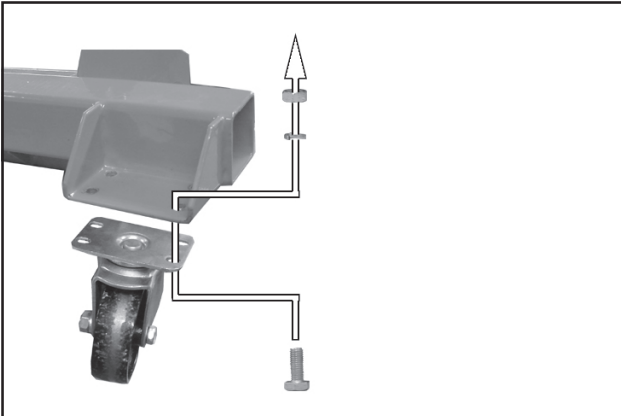
PARTS & SERVICE FAX 020 8558 3622

or e-mail as follows:

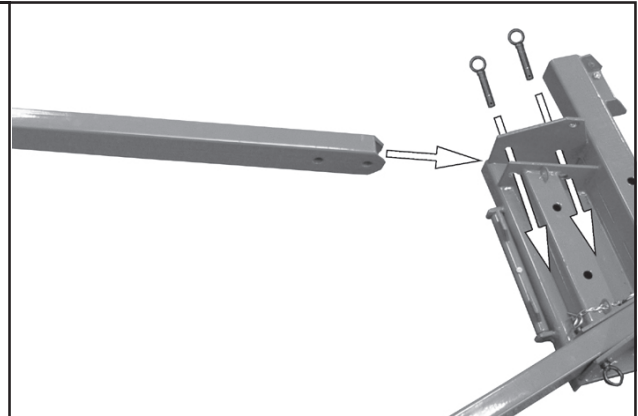
PARTS: Parts@clarkeinternational.com

SERVICE: Service@clarkeinternational.com

ASSEMBLY



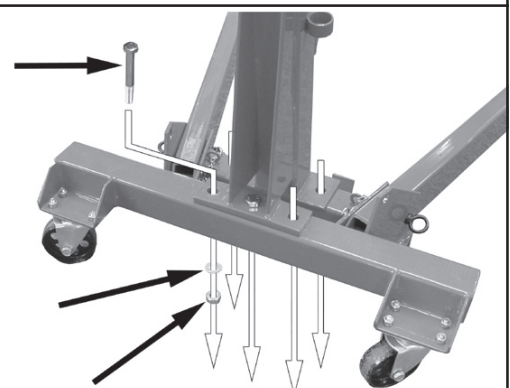
1. Fit the castor (24) to the base (28) using 4 bolts (16), lock washers (17) and nuts (23).
2. Repeat for both castors.



3. Slide the right leg (32) into the base (28) as shown, line up the holes and insert two lock pins (26).
4. Repeat the procedure for the left leg (31).



5. Secure the pins using the R clips (27) and small chains (25).
 - Make sure the chain passes through the loop shown on the left.

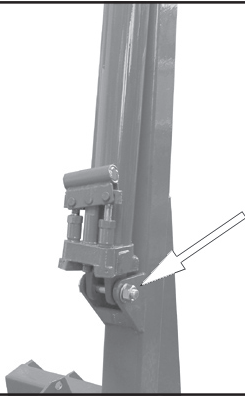


6. Attach the main support post (20) onto the base assembly (28) using five bolts (8), five washers (9) and five nuts (10).

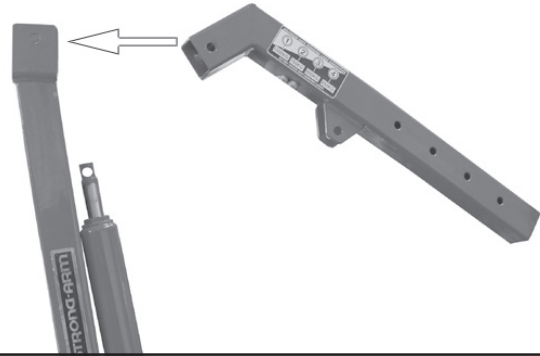


CAUTION: PLEASE TAKE CARE AS THE MAIN SUPPORT POST MAY TOPPLE OVER .

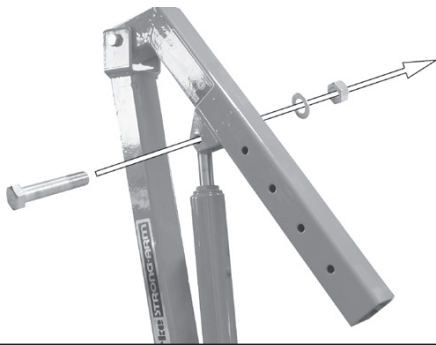
ASSEMBLY



7. Fix the ram (21) into position using bolt (22), washer (12) and nut (13).



8. Attach the jib (7) to the top of the main support post (20) using bolt (15), washer (12) and nut (13).



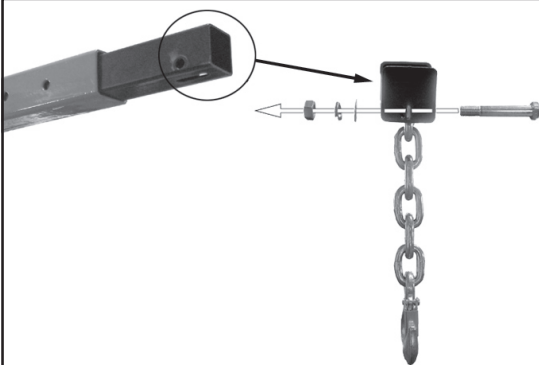
9. Connect the top of the ram (21) to the jib (7) as shown using bolt (11), washer (12) and nut (13).

Note: The ram may require extending to facilitate assembly, see page 8

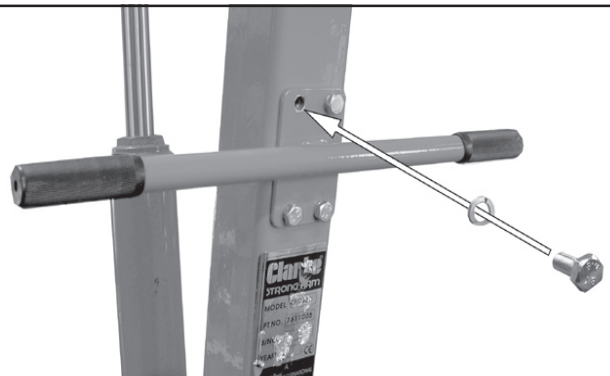


10. Slide the jib extension (6) into the jib (7), use the pin assembly (29) to lock it into the required position.

The pin is secured by inserting the attached R clip into the small hole at the other end of the pin.



11. Pass the last link of the chain and hook assembly (1) through the hole on the bottom of the jib extension (6). Secure the chain using bolt (2), washer (3), lock washer (4) and nut (5).



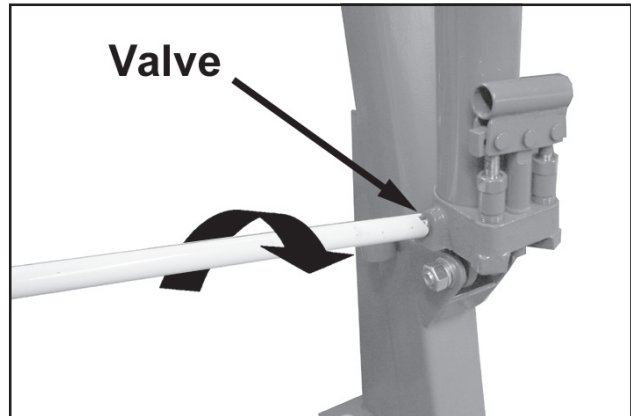
12. Connect the handle (18) to the rear of the main support post (20) using four bolts (16), and four lock washers (17).

OPERATION

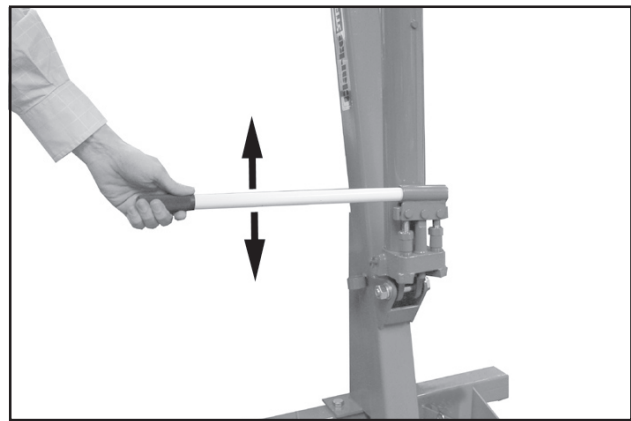
RAISING THE JIB

IMPORTANT: Make sure that the hook is directly above the point of lift, which in turn is directly above the centre of gravity of the load.

1. Use the end of the pump handle (19) to close the valve by turning it fully clockwise.
 - It should be hand tight, do not overtighten.



2. Return the pump handle (19) to the pump linkage and pump the handle until the crane reaches the desired height.

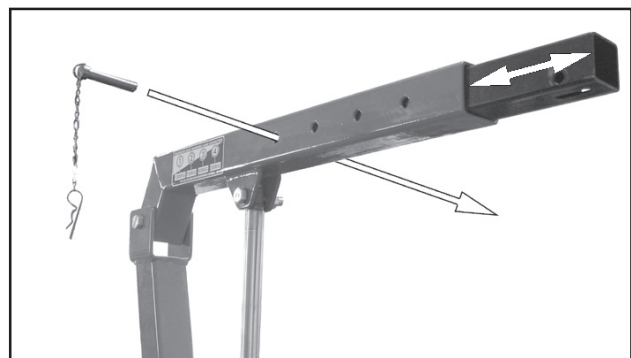


LOWERING THE JIB

1. Use the end of the pump handle (19) to turn the valve anticlockwise VERY SLOWLY.
 - The speed of lowering the load is controlled by how much you turn the valve.

EXTENDING THE JIB

1. Raise the jib to a horizontal position.
2. Remove the locating pin assembly (29), and withdraw the pin.
3. Reposition the jib extension to the desired length.
4. Replace the pin assembly (29) ensuring the 'R' clip is firmly in place.



NOTES:

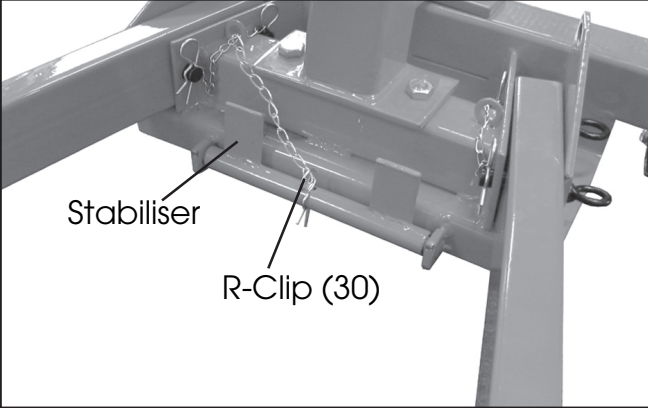
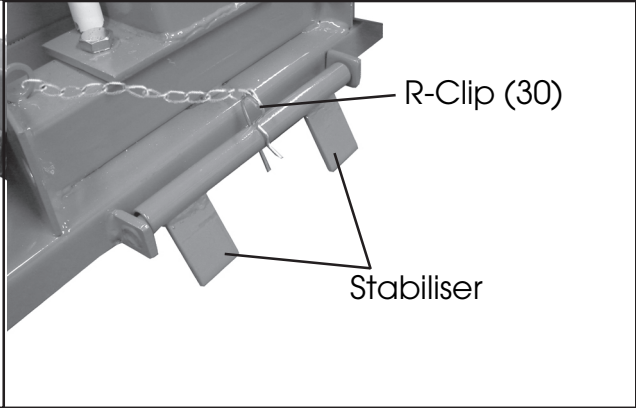
- a. During transit or storage, it is possible that an air pocket may have developed within the hydraulic ram, and the ram action may therefore appear to be 'spongy'. As the ram is self bleeding, any air will be dispelled and the ram action normalised by fully raising and lowering the jib a few times.
- b. Should the jib not reach its full height, the oil level should be checked, as described in the Maintenance section.

STORAGE

ALWAYS get adult assistance when folding the crane into its storage configuration.

TO STORE THE CRANE.

1. When storing the crane, the stabiliser must be locked in the down position. You may need to tilt the crane back slightly to position the stabiliser correctly.

	
<p>During use</p> <p>The stabiliser should be placed in the up position and locked in place using the heavy duty R Clip (30)</p>	<p>During storage</p> <p>The stabiliser should be placed in the down position and locked in place using the heavy duty R Clip (30)</p>

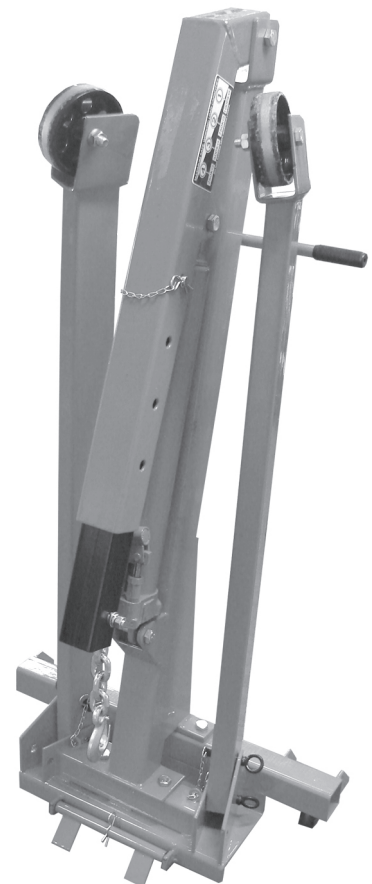
2. With an assistant supporting the crane, pull out the 'R' clip (27), which secures the front leg lock pin, then pull out the lock pin.
3. Raise the leg up to the storage position.
4. Replace the leg lock pin (26), through the hole provided in the frame so that the leg is locked in the up position,
5. Replace the 'R' clip to secure the locking pin.
6. The pump handle (19) is housed in a bracket on the side of the main support post (20).
7. Once the crane is folded use extreme care when moving it to the storage location.

STORAGE WARNINGS

1. The crane **MUST** be firmly secured to a wall or fixed location when not in use.
2. Use a strong strap or chain or suitable restraint to prevent any accidental movement.
3. Test that the crane is firmly secured before leaving it in its storage location.

Alternatively you can lay the crane down and store it flat.

Always secure the jib in its lowest position.



MAINTENANCE

GENERAL

1. Always, store the crane with the jib in its lowest position, This prevents any possibility of corrosion to the ram.
2. Do not leave the crane in the open or exposed to the elements. Keep under cover.
3. Do not attempt to adjust or tamper with the ram assembly, there are no serviceable parts. Contact your Clarke service department for any servicing.

BEFORE USE

1. Always visually inspect the crane before use, to ensure that all parts are correctly located and secure. Check for hydraulic leaks, signs of damage or worn parts and check the wheels and castors for serviceability.
2. A slight dampness on the ram is normal, but where leakage is apparent, the ram seals must be renewed. Consult your Clarke service department.

EVERY THREE MONTHS

1. Each pin and bolt should be removed and inspected for wear, deformation or cracks. If any are apparent, the pin or bolt should be renewed.
2. Check the hydraulic ram operation and check the hydraulic oil level. (see below).

ANNUALLY

The crane should be fully inspected annually by a competent person.

1. Check wheels and castors to ensure they move freely without undue wear to their bores, and that the wheels are not cracked or damaged in any way.
2. Remove any rust or corrosion and repaint to prevent further corrosion.
3. Ensure that all decals and warning labels are in place and perfectly legible.

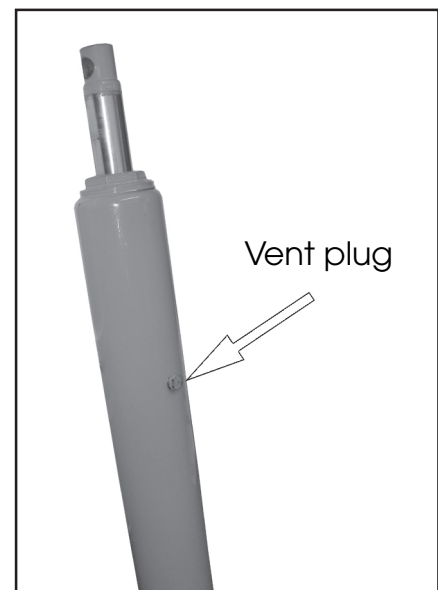
HYDRAULIC OIL

It may be necessary from time to time to top up the Hydraulic oil level, as follows.

1. Lower the jib to its lowest position, and remove the bolt that joins the ram (21) to the Jib (7).
2. Rest the ram against the main support post and raise and prop up the jib (7). Use a cable or similar ensure the ram does not drop.
3. Remove the vent plug from the side of the ram.
4. Top up the oil until it is level with the hole. Then replace the vent plug.
 - We recommend that the hydraulic oil is changed after every 100 hours of operation.

NOTE: Top up using Clarke hydraulic oil (part number 3050830).

- Do not mix different types of oil.



DECLARATION OF CONFORMITY



Clarke[®]
INTERNATIONAL

Hemnall Street, Epping, Essex CM16 4LG

DECLARATION OF CONFORMITY

This is an important document and should be retained.

We hereby declare that this product(s) complies with the following directive(s):

2006/42/EC Machinery Directive.

The following standards have been applied to the product(s):

EN 1494:2000+A1:2008,

The technical documentation required to demonstrate that the product(s) meet(s) the requirement(s) of the aforementioned directive(s) has been compiled and is available for inspection by the relevant enforcement authorities.

The CE mark was first applied in: 2003

Product Description: 1 Tonne Folding Crane
Model number(s): CFC 100
Serial / batch Number: N/A
Date of Issue: 16/06/2014

Signed:

J.A. Clarke
Director

A SELECTION FROM THE VAST RANGE OF

Clarke®

QUALITY PRODUCTS

AIR COMPRESSORS

From DIY to industrial, Plus air tools, spray guns and accessories.

GENERATORS

Prime duty or emergency standby for business, home and leisure.

POWER WASHERS

Hot and cold, electric and engine driven - we have what you need

WELDERS

Mig, Arc, Tig and Spot. From DIY to auto/industrial.

METALWORKING

Drills, grinders and saws for DIY and professional use.

WOODWORKING

Saws, sanders, lathes, mortisers and dust extraction.

HYDRAULICS

Cranes, body repair kits, transmission jacks for all types of workshop use.

WATER PUMPS

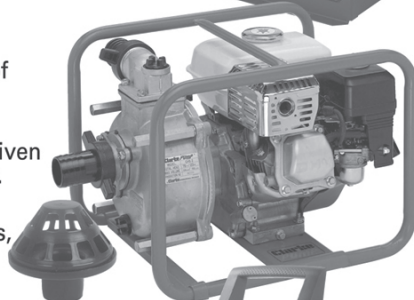
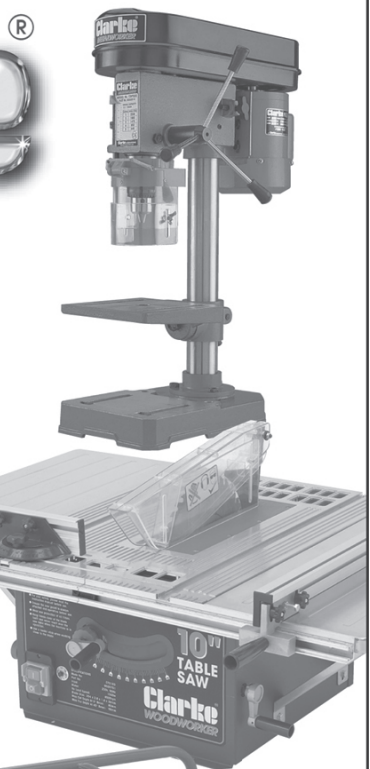
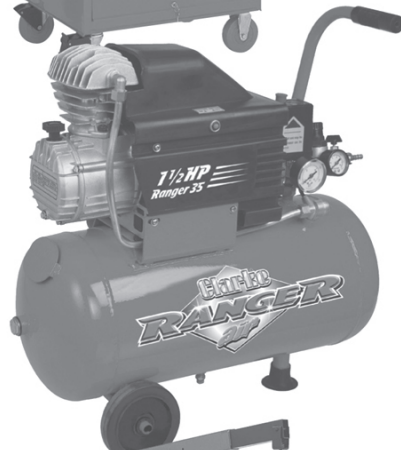
Submersible, electric and engine driven for DIY, agriculture and industry.

POWERTOOLS

Angle grinders, cordless drill sets, saws and sanders..

STARTERS/CHARGERS

All sizes for car and commercial use.



PARTS & SERVICE: 0208 988 7400

E-mail: Parts@clarkeinternational.com or Service@clarkeinternational.com

SALES: UK 01992 565333 or Export 00 44 (0)1992 565335

Clarke® INTERNATIONAL Hemnall Street, Epping, Essex CM16 4LG
www.clarkeinternational.com