

Glantke®

air



HIGH SPEED SABRE SAW

Model Nos: CAT32B & CAT97

Part No: 3110426 & 3110853

OPERATION & MAINTENANCE INSTRUCTIONS



INTRODUCTION

Thank you for purchasing this CLARKE air tool.

Before attempting to use the product, it is essential that you read this manual thoroughly and carefully follow all instructions given. In doing so you will ensure the safety of yourself and that of others around you, and you can also look forward to the product giving you long and satisfactory service.

GUARANTEE

This CLARKE product is guaranteed against faulty manufacture for a period of 12 months from the date of purchase. Please keep your receipt as proof of purchase.

This guarantee is invalid if the product is found to have been abused or tampered with in any way, or not used for its intended purpose.

Faulty goods should be returned to their place of purchase, no product can be returned to us without prior permission. This guarantee does not effect your statutory rights.

ENVIRONMENTAL PROTECTION



Do not dispose of this product with general household waste. All tools, accessories and packaging should be sorted, taken to a re-cycling centre and disposed of appropriately.

TABLE OF CONTENTS

INTRODUCTION	2
GUARANTEE	2
ENVIRONMENTAL PROTECTION	2
TABLE OF CONTENTS	3
SAFETY PRECAUTIONS	4
OVERVIEW	6
AIR SUPPLY REQUIREMENTS.....	7
ASSEMBLY	8
OPERATION.....	9
TROUBLESHOOTING.....	10
MAINTENANCE	11
PARTS LIST & DIAGRAM.....	12
SPECIFICATIONS	14
DECLARATION OF CONFORMITY	15

SAFETY PRECAUTIONS



CAUTION: FAILURE TO FOLLOW THESE PRECAUTIONS COULD RESULT IN PERSONAL INJURY, AND /OR DAMAGE TO PROPERTY

WORK ENVIRONMENT

- Keep the work area clean and tidy.
- Dress appropriately - Do not wear loose clothing or jewellery. Tie long hair out of the way.
- Keep children and visitors away - Do not let children handle the tool. Make sure that any other persons in the work area are dressed suitably and are wearing eye and ear protectors.
- Keep the air supply hose away from heat, oil and sharp edges.
- Do not fit the tool to any stand or clamping device that may damage the tool.

GENERAL USE

- Stay alert and use common sense - do not use the tool when you are tired or under the influence of alcohol, drugs or medication.
- Always wear eye protection when using the tool - eye protection must provide protection from the front and the side.
- Always wear ear protectors when using the tool.
- Do not over-reach - keep proper footing and balance at all times.
- Never use any type of bottled gas as a source of power for the tool.
- Do not connect the air supply hose with your finger on the trigger of the tool.
- Do not exceed the maximum pressure for the tool: 90 psi / 6.2 bar.
- Check hoses for leaks or worn condition before use and ensure that all connections are secure.
- Do not use the tool for any other purpose than that described in this booklet.
- Do not carry out any alterations or modifications to the tool.
- Always disconnect from the air supply when:
 - a) Performing any maintenance.
 - b) The tool is not in use.

- c) The tool will be left unattended.
- d) Moving to another work area.
- Never use the tool if it is defective or operating abnormally.
- The tool should be serviced as required by your CLARKE dealer.
- Avoid damaging the tool for example by applying excessive force.
- ALWAYS maintain the tool with care. Keep it clean for best and safest performance.
- ALWAYS ensure the workpiece is firmly secured leaving both hands free to control the tool.
- ALWAYS ensure the tool has stopped before putting it down after use.
- ALWAYS ensure that any attachments are correctly fastened before connecting the tool to the power supply.
- Quick change air-line couplings should not be located at the tool. They add weight and could fail due to vibration.
- DO NOT force or misuse the tool. It will do a better and safer job operating at the rate for which it was designed.
- Do not remove any labels. Damaged labels should be replaced.
- This tool vibrates during use. Vibration may be harmful to your hands or arms. Stop using the tool if discomfort, a tingling feeling or pain occurs and seek medical advice before resuming use.

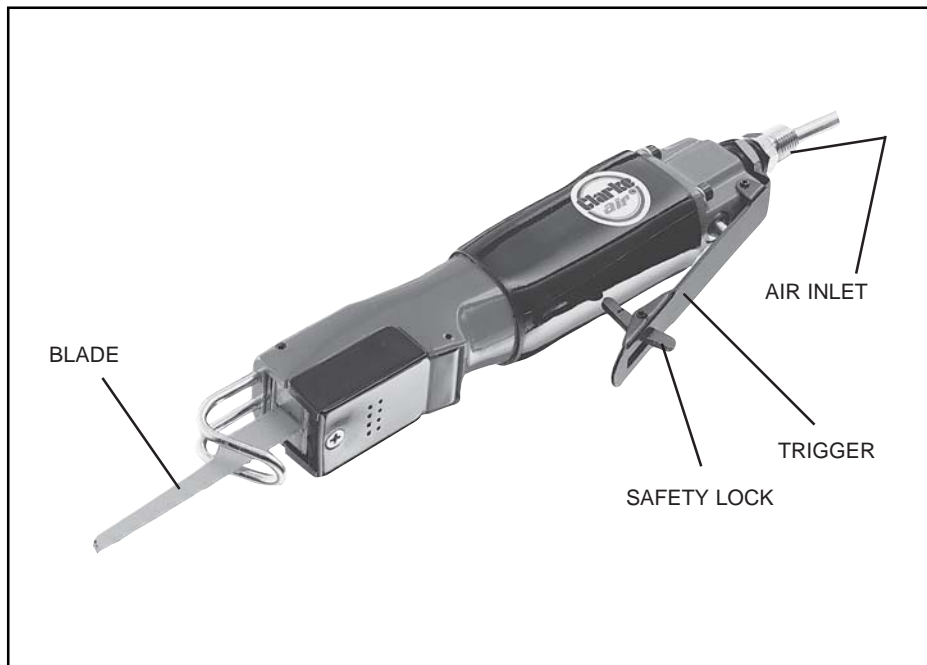
TRANSPORTATION

- Never carry the tool by the air supply hose.
- Never carry the tool with your finger on the trigger.

STORAGE

- When not in use the tool must be disconnected from the air supply and stored in a dry place out of the reach of children (preferably in a locked cabinet).
- Avoid storage in environments where the temperature is below 0°C.

OVERVIEW



The CAT32B and CAT 97 Sabre Saws are ideal for use in garages and workshops for cutting body panels, exhausts, plastics etc.

The only difference between the two sanders is that the external parts on the CAT97 are highly polished and include rubber grips. Should you require any component parts, refer to pages 12 and 13 in the manual and contact your Clarke dealer.

When unpacking the tool, any damage or deficiency should be reported to your CLARKE dealer immediately. The carton contains:

- Heavy Duty Sabre Saw
- Set of 3 Blades
- Instruction Manual (this document)

Your sabre saw has been designed to give long and trouble free service. If, however, having followed the instructions in this booklet carefully, you encounter problems, take the unit to your local CLARKE dealer.

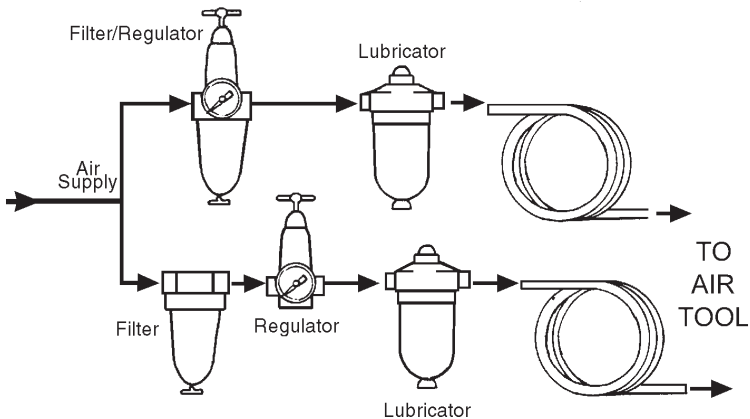
AIR SUPPLY REQUIREMENTS



WARNING: COMPRESSED AIR CAN BE DANGEROUS. ENSURE THAT YOU ARE THOROUGHLY FAMILIAR WITH ALL PRECAUTIONS RELATING TO THE USE OF COMPRESSORS AND COMPRESSED AIR SUPPLY.

- Use only clean, dry, regulated compressed air as a power source.
- Air compressors used with the tool must comply with the appropriate European Community safety directives.
- A build up of moisture in the air compressor will accelerate wear and corrosion in the moving parts. Ensure any moisture is drained from the compressor daily and the inlet filter is kept clean.
- If an unusually long air hose is required, (over 8 metres), line pressure may need to be increased.
- Never exceed the maximum operating pressure for the tool.
- The air hose must be rated at least 150% of the maximum operating pressure of the tool.
- A pressure of 90psi with a flow of 6 cfm is required. Too high an air pressure will shorten the life of the tool due to excessive wear.

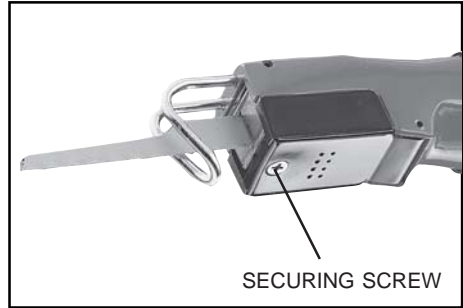
A typical airline layout is shown. If an automatic in-line filter/regulator/lubricator unit is used it will keep the tool in good condition, but should be regularly checked and topped up with oil.



ASSEMBLY

INSTALLING THE BLADE

1. Slide the blade into the saw as shown.
2. Remove the protective cover by undoing the screw shown.
3. Secure the blade by tightening the two hex screws using the hex key supplied.



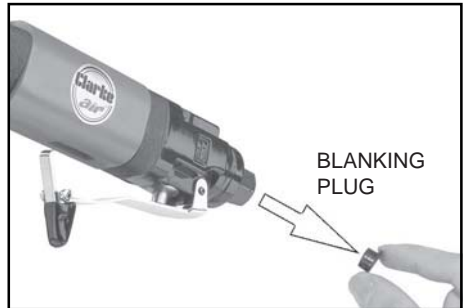
CONNECTING THE AIR SUPPLY



WARNING: COMPRESSED AIR CAN BE DANGEROUS. ENSURE THAT YOU ARE FAMILIAR WITH ALL PRECAUTIONS RELATING TO THE USE OF COMPRESSORS AND COMPRESSED AIR SUPPLIES.

Note: Ensure the compressor is turned off.

1. Remove the plastic blanking plug from the connection port of the tool.
2. Pour 2-3 drops of CLARKE airline oil into the air inlet. This should be done regardless of whether or not a lubricated air supply is to be used.
3. Connect a suitable hose to the tool as shown.
4. Connect the other end of the hose to the compressor. (A whip hose with a quick fit coupling is available from your CLARKE dealer).
5. Turn on the air supply and check for air leaks. Rectify any found before proceeding. The tool is now ready for use.



OPERATION

1. Slide the safety lock forward.
2. Squeeze the trigger
 - Allow the saw to reach full speed before use.
3. Release the trigger to stop the saw. When the blade has stopped remove it from the workpiece.
4. Release the trigger to stop the tool.
5. Always ensure the tool has stopped before putting it down.



DISCONNECTING THE AIR SUPPLY

1. Do not disconnect the air supply hose until the compressor has been shut down and the compressed air pressure released.
2. Once the pressure has been released, disconnect the air supply hose from the tool.

STORAGE

1. Store the tool safely in its box in a dry, secure environment.
2. When storing, ensure the blanking plug is replaced on the airline connector once the airline has been disconnected.
3. If the tool is not to be used for longer than 24 hours, run a few drops of CLARKE airline oil into the air inlet and run the tool for a few seconds to ensure that the oil has been well distributed throughout the tool.

TROUBLESHOOTING

SYMPTOM	PROBLEM	SOLUTION
Tool runs at normal speed but slows down under load.	<ol style="list-style-type: none"> 1. Motor parts worn. 2. Worn or sticking mechanism due to lack of lubricant. 	<ol style="list-style-type: none"> 1. Return to dealer for overhaul. 2. Drip air tool lubricating oil into air inlet and soak moving parts.
Tool runs slowly. Air flows lightly from exhaust.	<ol style="list-style-type: none"> 1. Motor parts jammed with gum &/or dirt particles. 2. Regulator in closed position. 3. General airflow blocked by dirt. 	<ol style="list-style-type: none"> 1. Examine inlet air filter for cleanliness. 2. Adjust regulator to open position. 3. Operate tool in short bursts of forward/reverse rotation.
Tool will not run. Air flows freely from exhaust.	<ol style="list-style-type: none"> 1. Motor vanes stuck due to buildup of foreign material. 	<ol style="list-style-type: none"> 1. Disconnect air supply & rotate tool assembly manually. 2. Try operating tool in short bursts of forward/reverse rotation. 3. Tap motor housing gently with rubber mallet. 4. Drip a few drops of air tool lubricating oil into the air inlet to soak moving parts.
Tool will not shut off.	<ol style="list-style-type: none"> 1. Throttle O-rings damaged or not seated correctly. 	<ol style="list-style-type: none"> 1. Replace O-ring or return to Clarke dealer for repair.

MAINTENANCE



WARNING! MAKE SURE THAT THE TOOL IS DISCONNECTED FROM THE AIR SUPPLY BEFORE STARTING ANY CLEANING OR MAINTENANCE PROCEDURES.

DAILY

- Drain water from the compressor air tank and air-line.
- Pour a few drops of CLARKE air line oil** into the air inlet. This should be carried out regardless of whether or not an air line lubricator is used. If a lubricator is not used, this procedure should be repeated after every two to three hours of use.



WEEKLY

- Check the air inlet screen filter shown in Fig 4 and clean if necessary.

CLEANING

- Keep the body of the tool clean and free from debris. Grit or gum deposits in the tool may reduce efficiency.
- After extensive use, remove the inlet screen filter and flush out the mechanism with gum solvent oil or an equal mixture of SAE No10 oil and paraffin. Allow to dry before use.

SERVICE AND REPAIR

- Any major servicing and repairs should be carried out by your local CLARKE dealer or a qualified service technician.

PERFORMANCE

Please note that factors other than the tool may effect its operation and efficiency such as reduced compressor output, excessive drain on the airline, moisture, or restrictions in the line, or the use of connectors of improper size or poor condition which will reduce air supply.

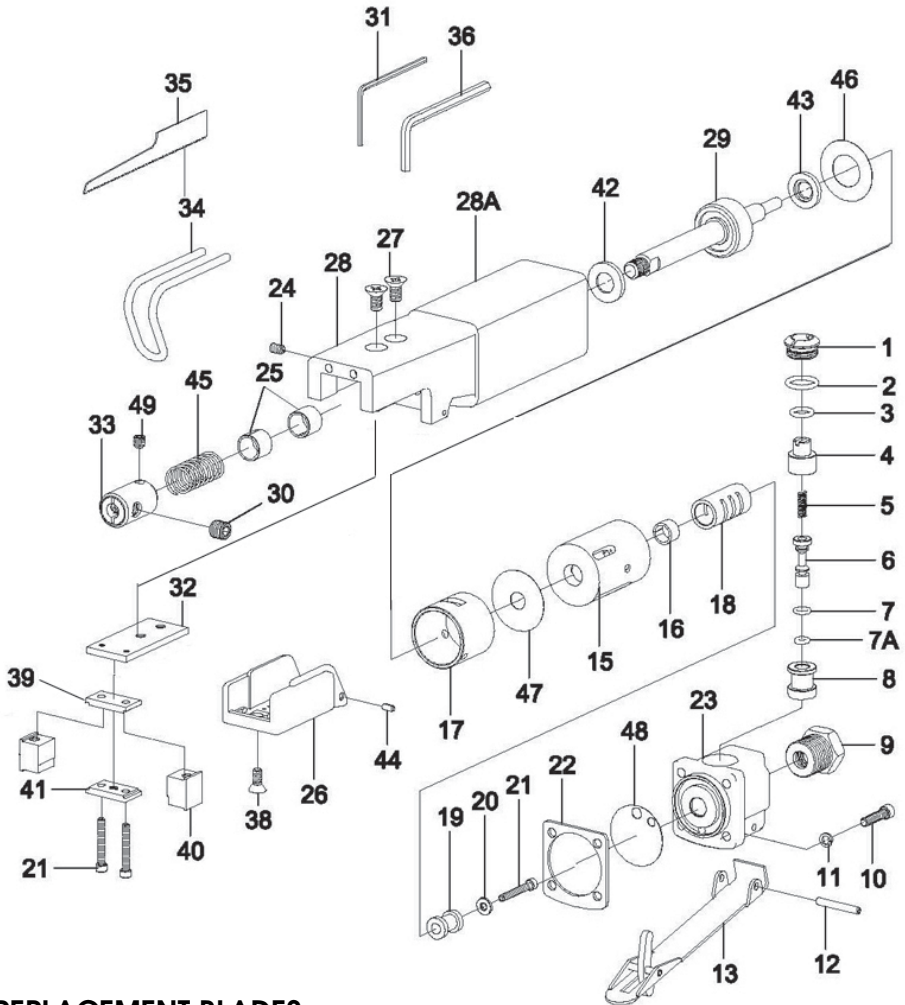
**Clarke Airline Oil is available from your CLARKE dealer: part no 3050825.

PARTS LIST

No	Description
1	Valve Screw-Cap
2	O-Ring
3	O-Ring
4	Air Controller
5	Valve Spring
6	Valve Stem
7	O-Ring
7a	O-Ring
8	Valve Bush
9	Inlet Bush
10	Cap Screw
11	Washer
12	Lever Hinge Pin
13	Throttle Lever
15	Valve Body
16	Bush
17	Cylinder
18	Valve Sleeve
19	Valve Actuator
20	Washer
21	Cap Headed Screw
22	Gasket
23	Valve Body
24	Set Screw
25	Bush
26	Chuck Cover

No	Description
27	Screw
28	Housing
29	Piston Assembly
30	Set Screw
31	Hexagonal key (2mm)
32	Guide Plate
33	Blade Chuck
34	Work Guide (long/short)
35	Saw Blade 32 teeth
35	Saw Blade 24 teeth
36	Hexagonal key (4mm)
38	Screw
39	Upper Wear Shoe
40	Blade Guide
41	Bridge
42	Front Bumper
43	Rear Bumper
44	Roll Pin
45	Spring
46	Packer
47	Packer
48	Packer
49	Set Screw
28a	Plastic Cover

PARTS DIAGRAM



REPLACEMENT BLADES

Replacement blades are available from your CLARKE dealer:

Part no. 3110429

ACCESSORIES

A wide range of accessories are available including filter/regulators, lubricators, high pressure hoses, etc. Contact your CLARKE dealer for further information, or call CLARKE International on 01992 565333.

SPECIFICATIONS

Feature	Specification	
Model Number	CAT32	CAT97
Nominal Air Consumption	6 cfm	5 cfm
Operating Air Pressure	90 psi (6.2 bar)	90 psi (6.2 bar)
Air Inlet Size	1/4" BSP	1/4" BSP
Maximum Speed	10,000 strokes/min	10,000 strokes/min
Minimum Hose Size	1/4" (6mm)	1/4" (6mm)
Sound Pressure Level (L_{PA} dB)	92 dBA	92 dBA
Sound Power Level (Lwa Db)	100 dBA	100 dBA
Vibration Levels	3.26 m/s ²	3.26 m/s ²
Uncertainty value - k:	9.7 m/s ²	9.7 m/s ²
Highest measured reading (single plane)	24.9 m/s ²	24.16 m/s ²
Weight	1.2 kg	0.5 kg
Stroke length	1/4" (6mm)	13 mm

DECLARATION OF CONFORMITY



Clarke[®]
INTERNATIONAL

Hemnoll Street, Epping, Essex CM16 4LG

DECLARATION OF CONFORMITY

This is an important document and should be retained.

We hereby declare that this product(s) complies with the following directive(s):

2006/42/EC Machinery Directive.

The following standards have been applied to the product(s):

EN 792-12:2000+A1:2008.

The technical documentation required to demonstrate that the product(s) meet(s) the requirement(s) of the aforementioned directive(s) has been compiled and is available for inspection by the relevant enforcement authorities.

The CE mark was first applied in: 2002

Product Description: Sabre Saws
Model number(s): CAT 32B - 97
Serial / batch Number: N/A
Date of Issue: 10/11/2012

Signed:

J.A. Clarke
Director

A SELECTION FROM THE VAST RANGE OF

Clarke®

QUALITY PRODUCTS

AIR COMPRESSORS

From DIY to industrial, Plus air tools, spray guns and accessories.

GENERATORS

Prime duty or emergency standby for business, home and leisure.

POWER WASHERS

Hot and cold, electric and engine driven - we have what you need

WELDERS

Mig, Arc, Tig and Spot. From DIY to auto/industrial.

METALWORKING

Drills, grinders and saws for DIY and professional use.

WOODWORKING

Saws, sanders, lathes, mortisers and dust extraction.

HYDRAULICS

Cranes, body repair kits, transmission jacks for all types of workshop use.

WATER PUMPS

Submersible, electric and engine driven for DIY, agriculture and industry.

POWER TOOLS

Angle grinders, cordless drill sets, saws and sanders.

STARTERS/CHARGERS

All sizes for car and commercial use.



PARTS & SERVICE: 020 8988 7400

E-mail: Parts@clarkeinternational.com or Service@clarkeinternational.com

SALES: UK 01992 565333 or Export 00 44 (0)1992 565335

Clarke INTERNATIONAL Hemnall Street, Epping, Essex CM16 4LG
www.clarkeinternational.com