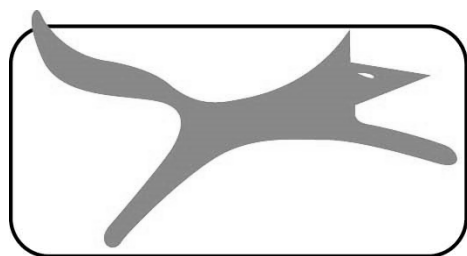


# 1HP DUST EXTRACTOR

**FOX Model F50-841**



**ASSEMBLY AND OPERATING INSTRUCTIONS**



# FOX

# 1hp Dust Extractor

## FOX MODEL F50-841

### TABLE OF CONTENTS

- Safety instructions.....Page 3
- Specific safety instructions for dust collectors.....Page 5
- Specifications.....Page 6
- Electrical connections.....Page 7
- Earthing instructions.....Page 7
- Environmental protection.....Page 8
- Symbols.....Page 8
- Unpacking the dust collector.....Page 9
- Assembling the dust collector.....Page 10
- Parts diagram.....Page 12
- Parts list.....Page 13
- DART Tool Group Guarantee.....Page 14
- Declaration of Conformity.....Page 15



#### ATTENTION :

- Read the instructions for use carefully before using the machine
- This device meets current safety standards for electrical machines.
- Incorrect use may result in injury. Anyone not familiar with the instructions for use should not use the machine. Keep these instructions for use safe.

## SAFETY INSTRUCTIONS

**ALWAYS DISCONNECT THE MACHINE FROM THE POWER SOCKET BEFORE ATTEMPTING ANY MAINTENANCE.**



**Keep a safe working zone for both staff and equipment. NO CHILDREN must be allowed in the working zone under any circumstance.**

The machine must be always disconnected when not in use. Use the on/off switches on the machine. Always disconnect the machine by pulling the plug, do not pull the power cord.

Before using the machine, remove all tools used for setup and keep them away from your working zone. Reconnect the machine. Check that the working zone is clear and that there is plenty room to work with the wood.

Ensure you are in good working position. If the work will produce dust or small pieces, wear safety gear, protective glasses, gloves, a mask and ear defenders. If you have long hair, tie it up. Do not wear watches or bracelets. Wear shoes with good grip and remember to never place your fingers too near the blade.



**Do not use** the machine if you are tired or distracted because you risk injury.



**Do not use this machine** anywhere containing flammable liquids and/or volatile gases.

1. Keep your working area clean. Untidy working zones and busy workbenches invite injuries.
2. **Avoid** a dangerous environment. Do not expose machines to rain and not use them in wet places. Ensure your working zone is well lit. Do not use the machine where there is gas or flammable liquids.
3. **Protect yourself** from electric shocks. Avoid touching earthed surfaces.
4. **Keep** children and visitors well away from the working area.
5. **Tidy** up any tools not in use. When tools are not used, they should be kept in a dry, locked place, out of reach of children.
6. **Do not force** the machine. It will work better when used with the pressure it was designed for.
7. **Use** the correct tools. Do not force a small tool to do the work of a bigger tool. For example, do not use a circular saw to cut branches or logs.

8. **Wear** appropriate clothing. Avoid loose clothing, and remove jewellery which could become caught in moving parts. Non-slip shoes are particularly recommended when working outside. Keep long hair tied up.
9. **Always** wear safety glasses. Also wear a mask if operating the machine creates dust.
10. **Do not** mistreat the power cord. Never use the power cord to pull out the plug. Keep the power cord away from heat, oil and sharp edges.
11. **Do not** bend over the machine. Keep your balance at all times.
12. **Keep** tools in good condition. Clean tools to obtain the best results with them. **Follow instructions** to grease and change accessories. Regularly check the power cord and replace it if damaged. Keep handles dry, clean and free from oil and grease.
13. **Disconnect** the tool when not in use, before the maintenance and while changing accessories such as blades, drills, etc.
14. **Remove** all maintenance tools. Get used to checking that all maintenance tools are removed before using the machine.
15. **Avoid** accidentally starting the machine. Make sure that the switch is in the "OFF" position before connecting the power.
16. If the machine is used outside, use only extension leads designed for outdoor use.
17. **Be observant.** Use common sense when operating machinery. Do not use the tool when tired.
18. **Inspect** parts before use. Before continuing to use the tool, inspect any protective parts) which could be damaged to make sure that they work well. Verify that the moving parts are properly aligned, and are not jammed or broken. Check the assembly and any other conditions which may affect the correct functioning of the machine. Any damaged part or guard must be repaired or replaced by an approved after-sales service centre. Do not use the tool if the switch does not work correctly.
19. **Warning:** the use of any non-recommended accessory can present a health risk.
20. **Have the machine repaired** by a qualified person. This machine is built according to relevant safety requirements. Repairs must only be made by a qualified person using original spare parts, otherwise it may be very dangerous for the user.
21. **Keep these instructions.**

## SPECIFIC SAFETY INSTRUCTIONS FOR DUST COLLECTORS

1. **The filtration housing** contains a high speed fan blade that can amputate fingers, grab loose clothing and neckties, and propel dust at high velocities. **DO NOT OPERATE WITHOUT ALL PARTS IN PLACE.**
2. **Do not** attempt to clean, remove the dust bags, or service the unit when the power is on. Turn the unit off and disconnect the cord from the power source.
3. **Static shocks** are common in dry areas or when the relative humidity of the air is low. The use of a humidifier where the dust collector is to be used will help raise the relative humidity, and may reduce static shocks.
4. **Sparks** inside the electrical parts can ignite flammable vapours or dust.
5. **Do not** vacuum, or use the dust collector near flammable or combustible liquids, gases, gasoline or other fuels, lighter fluid, cleaners, oil-based paints, natural gas, hydrogen, or explosive dusts like coal dust, magnesium dust, grain dust, or gun powder.
6. **To avoid health hazards** from vapours or dusts, do not vacuum toxic materials.
7. **Do not** use or store near hazardous material.
8. **Do not** use outdoors or on wet surfaces.
9. **Put the unit** on a stable, level surface.
10. **Position** the vacuum hose and electric cord away from traffic areas.
11. **Do not** allow the unit to be used as a toy. Close attention is necessary when used by or near children.
12. **Do not leave** the dust collector plugged in. Unplug from the outlet when not in use and before servicing.
13. **To avoid injury** from accidental starting, unplug the power cord before changing or cleaning the filter/dust bag or chip bag.
14. **Do not** use without the filter/dust bag and/or chip bag in place.
15. **Do not** unplug by pulling on the cord. To unplug, grasp the plug, not the cord.
16. **Turn off the controls** before unplugging.
17. **Do not** use with a damaged cord, plug, or other parts. If your dust collection system is not working as it should, has missing parts, has been dropped, damaged, left outdoors, or dropped into water, return it to an authorised Service Centre.
18. **Do not** pull or carry by the cord, use the cord as a handle, close the door on the cord, or pull the cord. Keep the cord away from heated surfaces.
19. **Do not** handle the plug of the dust collector with wet hands.

20. **Do not** put any object into the ventilation openings. Do not vacuum with any ventilation opening blocked; keep free of dust, lint, hair or anything that may reduce air flow.
21. **Keep** hair, loose clothing, fingers, and all body parts away from openings and moving parts.
22. **Extension cords** in poor condition or that are too small can cause fire and shock hazards. When using an extension cord, ensure it is in good condition.
23. **Connect** to a properly grounded outlet only.
24. **Use only** heavy duty plastic trash bags when replacing the chip bag.
25. **Caution:** If using this dust collector to help keep airborne wood dust in heavy usage within acceptable limits, you must regularly monitor airborne dust and maintain your dust collector to avoid exceeding dust limits. Each application is unique.
26. Your maintenance schedule must, therefore, be tailored to your specific use of this dust collector.
27. **Safety** is a combination of common sense, staying alert, and knowing how your dust collector works.
28. **Keep these instructions safe.**

## SPECIFICATIONS

Motor :	750W – 240V (1hp)
Filtration :	35 Microns
Bag size :	80 litres
Bag diameter :	360mm
Dimensions (h x l x d) :	1670x380x710mm
Weight :	25.5kg

## ELECTRICAL CONNECTIONS

### EXTENSION CORDS

Before using an extension cord, ensure the insulation is not cut or worn. Immediately repair or replace a damaged or frayed cord.



#### **ATTENTION :**

Extension cords must be removed from the work area or located so that they will not get caught in parts, tools or other objects while using the tool.

### ELECTRICAL CONNECTION

Your dust collector must be connected on an electrical supply of 240V, 50 Hz. If your machine does not work when it is connected please check your electrical supply.

## EARTHING INSTRUCTIONS

In case of malfunction or short circuit, grounding provides a path of least resistance for electric current to reduce the risk of electric shock. This tool is equipped with a power cord with an earthing conductor and a grounding plug. The plug must be plugged into a matching outlet that is properly installed and grounded in accordance with all local codes and regulations.


Do not modify the plug provided. If it does not fit into the outlet, have a proper outlet installed by a qualified electrician. Improper connection of the grounded equipment can result in a risk of electric shock. The green wire with or without yellow stripes is the earth wire. If repair or replacement of the power cord is necessary, do not connect the grounding conductor to a live terminal.

If the earthing instructions are not completely understood, check with a qualified electrician or a person responsible for maintenance, or if there is any doubt that the tool is properly grounded.

If the power cable is damaged, it must be replaced by the manufacturer, after sales service or similarly qualified persons in order to avoid a hazard. Do not operate the tool with a damaged power cable.

This tool is intended for use on an electrical circuit with a wall outlet and earthing pin.

## ENVIRONMENTAL PROTECTION

England		<p>Only for EU countries</p> <p>Do not dispose of electric tools together with household waste material!</p> <p>In observance of European Directive 2002/96/EC on waste electrical and electronic equipment and its implementation in accordance with national law, electric tools that have reached the end of their life must be collected separately and returned to an environmentally compatible recycling facility.</p>
---------	-----------------------------------------------------------------------------------	-------------------------------------------------------------------------------------------------------------------------------------------------------------------------------------------------------------------------------------------------------------------------------------------------------------------------------------------------------------------------------------------------------------------------------

**The crossed-out wheeled bin means that within the European Union the product must be taken to separate collection at the product end-of-life. This applies to your device but also to any enhancements marked with this symbol. Do not dispose of these products as unsorted municipal waste.**

**The European directive DEEE concerning the environment, states that it is forbidden to dispose of used electric or electronic devices in household waste. They must be taken to a compatible recycling facility.**

**ATTENTION:**

*The manufacturer reserves the right to change specifications without notice.*

*Images are supplied for information purposes only. Actual machine and accessories may differ in appearance.*

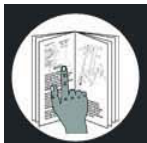
## SYMBOLS



Always wear protective goggles when using this machine.



Always wear ear defenders when using the machine.



Read and understand the instruction manual before using the machine



Heavy lift. Transporting the machine requires two people.



Always wear a protective mask if the operation is dusty.



Product meets relevant CE standards.



## UNPACKING THE DUST COLLECTOR

Unpack your dust collector carefully, taking care with the loose parts.

**Note :** if any parts are damaged or missing, do not connect the machine to the power and do not switch it on until the missing/damaged parts are replaced.

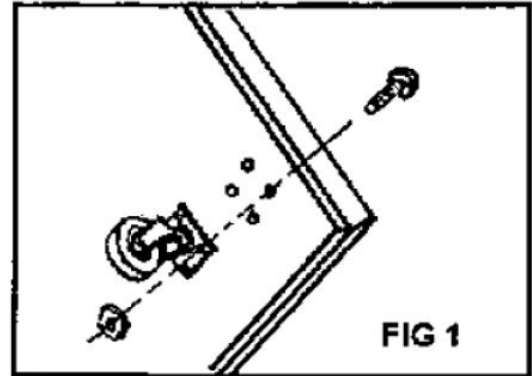
Do not throw away the cardboard box until you are sure the machine is working correctly.

Check that the following parts are included:

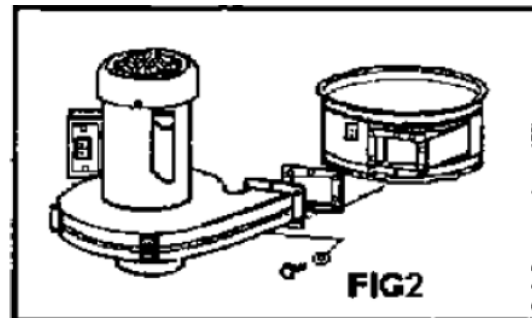
- A. Base
- B. Electric power collector
- C. Filtration housing
- D. Two bags
- E. Packing
- F. Bag of fixing parts
- G. Two directional castors
- H. Two universal castors
- I. Four support rods
- J. Four blocks
- K. Handle
- L. Vertical stand

## ASSEMBLING THE DUST COLLECTOR

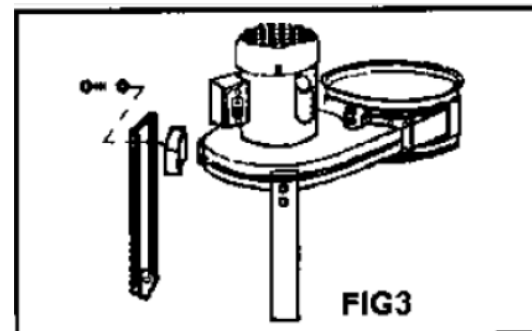
Stand the base (A) and adjust the castor holes to align with the base holes, then tighten the nuts and screws by means of screwdriver and wrench. Fig. 1.



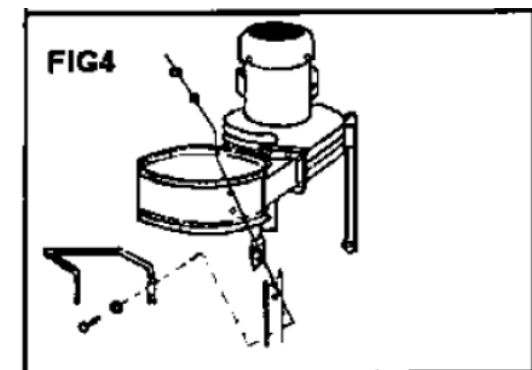
Align the filtration housing inlet (C) with the electric power collector outlet (B), insert the packing (E) between them then tighten them together with six bolts. Fig. 2.



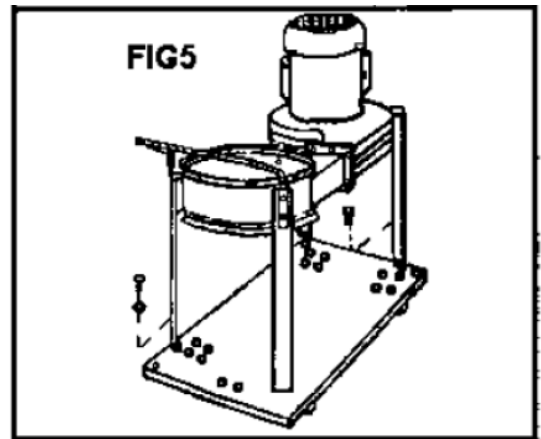
Mount two support rods (I) and blocks (J) on the electric power collector using bolts. Fig. 3.



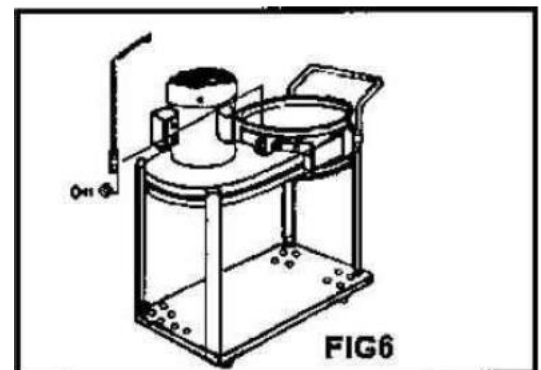
Mount another two support rods with block and handle (K) on the filtration housing using bolts. Fig. 4.



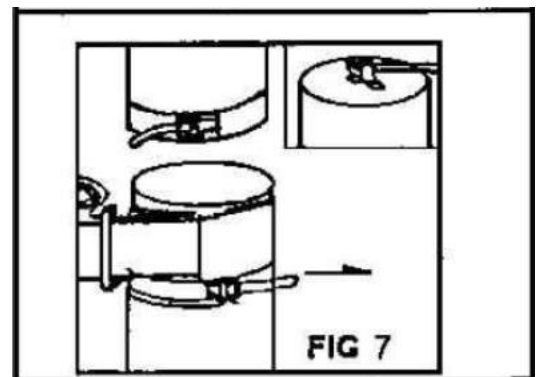
Put the base down and place the assembled collector and filtration housing on it, align the holes on the bottom end of the four support rods with those on the base, then insert the bolts and tighten. Fig. 5.



Put the hook of the vertical stand (L) upwards, align the two holes with those on the filtration housing, insert the screw and tighten. Fig. 6.



Attach the bottom end of the bag to the holder on the filtration housing, hold the holder on the hook then fasten the strap. Attach the lower bag on the bottom end of the filtration housing and fasten the strap. Fig. 7.



Assembly of the dust collector is now complete. A re-inspection is necessary to check that all bolts and screws are tight. After re-inspecting the machine, you can connect the dust collector to the power supply and have a trial run.

Note : the trial run should be performed according to the Safety Rules listed in this manual.

## Floor Sweeper

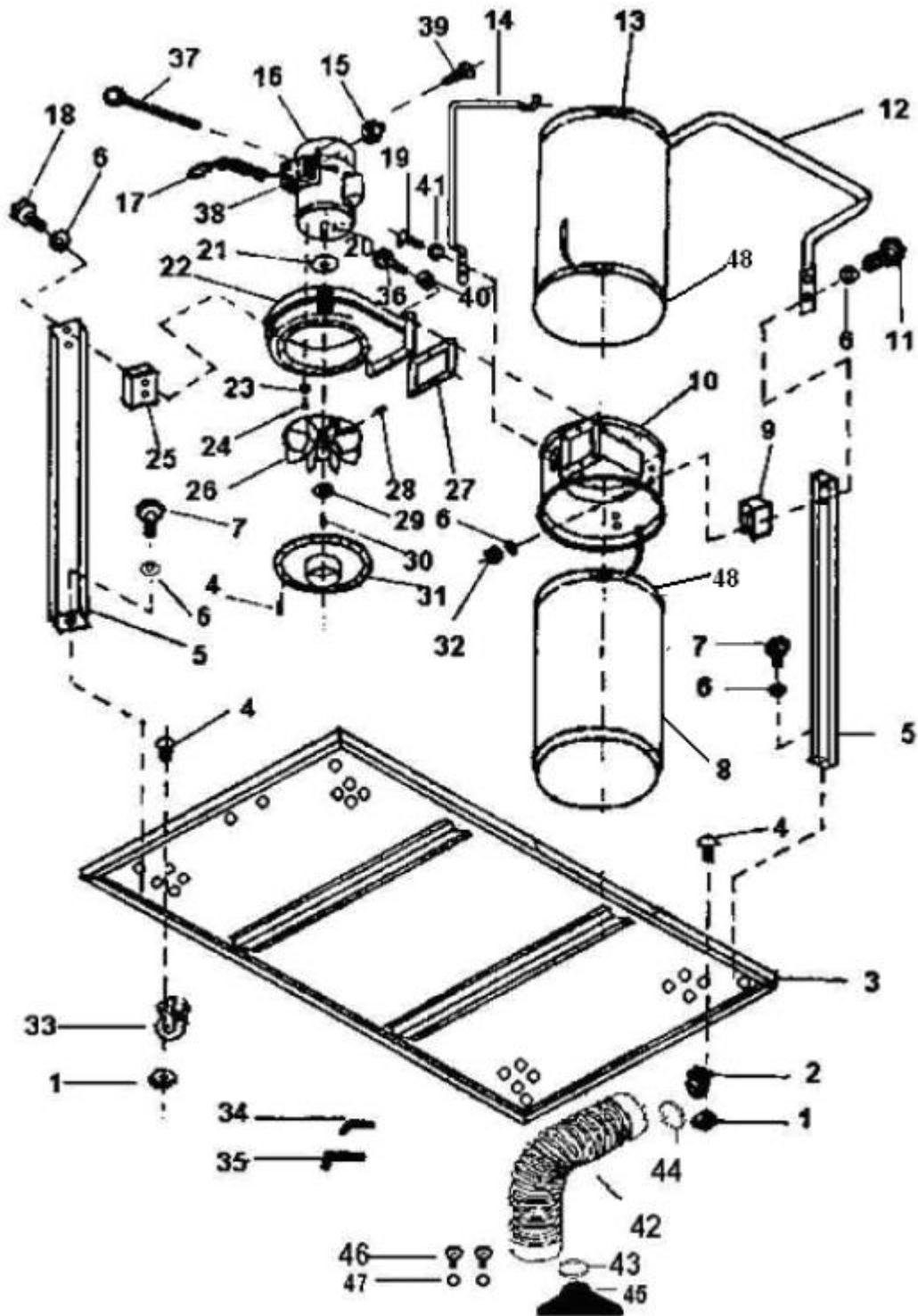
This item has a separate sweeper which can collect sawdust and wood chips from the floor. The sweeper can be fitted directly to other wood machines to collect sawdust and wood chips from other woodworking operations.

To fit the floor sweeper :

1. Attach the hose clamp (part 43, see diagram on page 12) to the end of the 4" hose and then to the inlet of the fan housing
2. Attach the hose clamp (part 43) to the other end of the floor sweeper (part 45)

Warning! Be sure to disconnect the machine from the power supply before attaching the floor sweeper.

# PARTS DIAGRAM



# PARTS LIST

NO	DESCRIPTION	Q'TY	NO	DESCRIPTION	Q'TY
1	nut	16	25	block	2
2	universal caster	2	26	turbo fan	1
3	base	1	27	packing	1
4	screw pan HD	28	28	screw hex HD	1
5	support rod	4	29	washer	1
6	washer	16	30	screw hex socket	1
7	screw hex HD	4	31	inlet	1
8	collector bag	1	32	nut	4
9	collector block	2	33	directional caster	2
10	filtration housing	1	34	wrench hex	1
11	screw hex HD	4	35	wrench hex	1
12	handle	1	36	screw hex	6
13	filter bag	1	37	screw pan HD	4
14	vertical stand	1	38	switch cover	1
15	switch	1	39	cross slot screw	2
16	motor	1	40	washer	6
17	power cord	1	41	washer	2
18	screw hex HD	4	42	hose	1
19	screw pan HD	2	43	hose clamp	1
20	key	1	44	hose clamp	1
21	packing	1	45	floor sweeper	1
22	fan housing	1	46	bolt	2
23	spring washer	4	47	washer	2
24	screw hex HD	4	48	bag clamp	2

## **DART TOOL GROUP GUARANTEE**

DART TOOL GROUP takes pride in the quality of the power tools it supplies. The component parts of our tools are inspected at various stages of production and each finished tool is subjected to a final check before being packaged for shipment. Because of our confidence in our engineering quality, DART TOOL GROUP agrees to repair or replace any part or parts of FOX Power Tools and accessories which, upon examination, prove to be defective in workmanship or material. The warranty period for the FOX branded products is one year for parts and labour and three years for parts only. The guarantee does not include repair, labour or parts requiring replacement because of misuse, abuse, or normal wear and tear. Repairs made by other than the factory, DART TOOL GROUP service centre or authorised FOX service dealers relieves DART TOOL GROUP of further liability under this guarantee. THIS GUARANTEE IS MADE EXPRESSLY IN PLACE OF ALL OTHER GUARANTEES OR WARRANTIES, EXPRESSED OR IMPLIED, WITH RESPECT TO QUALITY, MERCHANTABILITY, OR FITNESS FOR A PARTICULAR PURPOSE.



CE DECLARATION OF CONFORMITY OF THE MANUFACTURER

SERRACON

WHEATFIELD ROAD

DUNNIKIER BUSINESS PARK

KIRKCALDY, UK, KY1 3PD

Tel. +44 (0) 1592 652946 Fax: +44 (0) 1592 654854

Declares that the: 1HP DUST COLLECTOR (F50-841)

is in compliance with the regulations included in the Directives: CEE 2006/42-2004/108-2006/95

Person authorized to create the technical file: **Robert Paterson**



06.05.2011

---

**The Director**

*Robert Paterson*